

Product datasheet for **RC200562**

Synaptogyrin 1 (SYNGR1) (NM_145731) Human Tagged ORF Clone

Product data:

Product Type: Expression Plasmids
Product Name: Synaptogyrin 1 (SYNGR1) (NM_145731) Human Tagged ORF Clone
Tag: Myc-DDK
Symbol: Synaptogyrin 1
Mammalian Cell Selection: Neomycin
Vector: pCMV6-Entry (PS100001)
E. coli Selection: Kanamycin (25 ug/mL)
ORF Nucleotide Sequence: >RC200562 ORF sequence
 Red=Cloning site Blue=ORF Green=Tags(s)

TTTTGTAATACGACTCACTATAGGGCGGCCGGAATTCGTCGACTGGATCCGGTACCGAGGAGATCTGCC
 GCC**CGATCGCC**

ATGGAAGGGGGTGCCTACGGAGCGGGCAAAGCCGGGGCGCCTTCGACCCCTACACCCTGGTCCGGCAGC
 CGCACACCATCTGCGCGTCGTGTCTTGGCTGTCTCCATAGTGGTGTTCCGGCTCCATCGTGAACGAGGG
 CTACCTCAACAGCGCCTCCGAGGGGAGGAGTTCTGCATCTACAACCGCAACCCCAACGCCTGCAGCTAT
 GGCGTGGCCGTGGGCGTGCTCGCCTTCTCACCTGCCTGCTGTACCTGGCCCTGGACGTGTACTCCCGC
 AGATCAGCAGCGTCAAGGACCGCAAGAAAGCCGTCCTGTCCGACATCGGTGTCTCGGCCTTCTGGGCTTT
 CCTCTGGTTCTGGGATTCTGCTACCTGGCCAACCAAGTGGCAGGTCTCCAAGCCCAAGGACAACCCACTG
 AACGAAGGGACGGACGCAGCCCGGGCCGCATCGCCTTCTCCTTTTTCTCCATCTTACCTGGAGCCTGA
 CCGCAGCCCTGGCCGTGCGGAGATTCAAGGACCTAAGCTTCCAGGAGGAGTACAGCACACTGTTCCCTGC
 CTCGGCACAGCCG

ACGCGTACGCGGCCGCTCGAGCAGAACTCATCTCAGAAGAGGATCTGGCAGCAATGATATCCTGGATT
 ACAAGGATGACGACGATAAGGTTTAA

Protein Sequence: >RC200562 protein sequence
 Red=Cloning site Green=Tags(s)

MEGGAYGAGKAGGAFDPYTLVRQPHTILRVVSWLFSIVVFGSIVNEGYLNSASEGEEFCIYNRNPACSY
 GVAVGVLAFLLTCLLYLALDVYFPQISSVKDRKKAVLSDIGVSAFWAFLWVGFVCYLANQWQVSKPKDNPL
 NEGTDAAARAAIAFSFFSIFTWLSLTAALAVRRFKDLSFQEEYSTLFPASAQP

TRTRPLEQKLISEEDLAANDILDYKDDDDKV

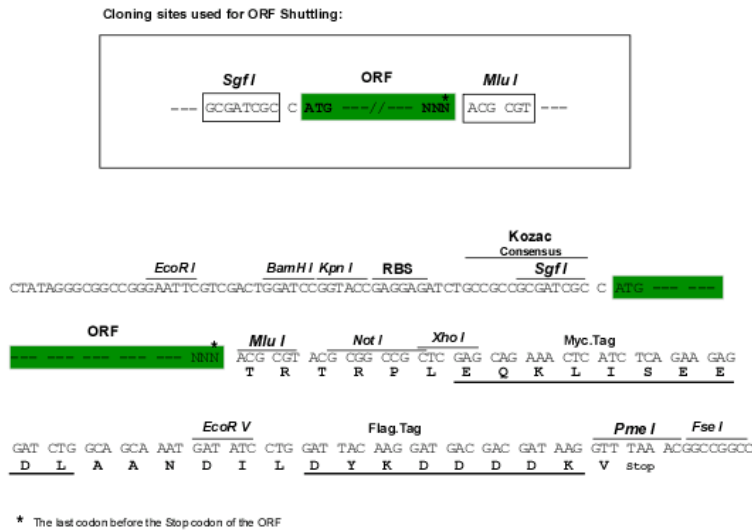
Chromatograms: https://cdn.origene.com/chromatograms/mk6396_h10.zip



[View online »](#)

Restriction Sites: SgfI-MluI

Cloning Scheme:



ACCN: NM_145731

ORF Size: 573 bp

OTI Disclaimer: The molecular sequence of this clone aligns with the gene accession number as a point of reference only. However, individual transcript sequences of the same gene can differ through naturally occurring variations (e.g. polymorphisms), each with its own valid existence. This clone is substantially in agreement with the reference, but a complete review of all prevailing variants is recommended prior to use. [More info](#)

OTI Annotation: This clone was engineered to express the complete ORF with an expression tag. Expression varies depending on the nature of the gene.

Components: The ORF clone is ion-exchange column purified and shipped in a 2D barcoded Matrix tube containing 10ug of transfection-ready, dried plasmid DNA (reconstitute with 100 ul of water).

- Reconstitution Method:**
1. Centrifuge at 5,000xg for 5min.
 2. Carefully open the tube and add 100ul of sterile water to dissolve the DNA.
 3. Close the tube and incubate for 10 minutes at room temperature.
 4. Briefly vortex the tube and then do a quick spin (less than 5000xg) to concentrate the liquid at the bottom.
 5. Store the suspended plasmid at -20°C. The DNA is stable for at least one year from date of shipping when stored at -20°C.

Note: Plasmids are not sterile. For experiments where strict sterility is required, filtration with 0.22um filter is required.

RefSeq: [NM_145731.3](#)

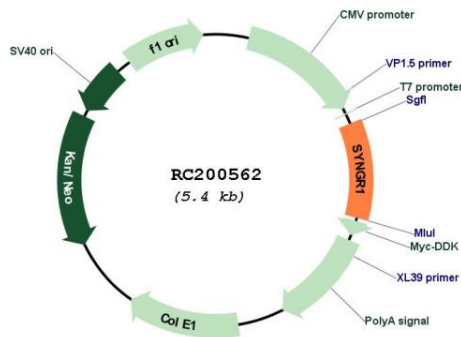
RefSeq Size: 1341 bp

RefSeq ORF: 576 bp

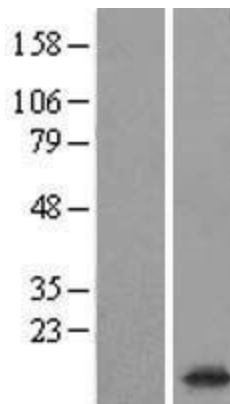
Locus ID: 9145
UniProt ID: [O43759](#)
Cytogenetics: 22q13.1
Domains: MARVEL
Protein Families: Transmembrane
MW: 21 kDa

Gene Summary: This gene encodes an integral membrane protein associated with presynaptic vesicles in neuronal cells. The exact function of this protein is unclear, but studies of a similar murine protein suggest that it functions in synaptic plasticity without being required for synaptic transmission. The gene product belongs to the synaptogyrin gene family. Three alternatively spliced variants encoding three different isoforms have been identified. [provided by RefSeq, Jul 2008]

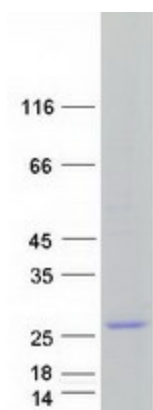
Product images:



Circular map for RC200562



Western blot validation of overexpression lysate (Cat# [LY407866]) using anti-DDK antibody (Cat# [TA50011-100]). Left: Cell lysates from untransfected HEK293T cells; Right: Cell lysates from HEK293T cells transfected with RC200562 using transfection reagent MegaTran 2.0 (Cat# [TT210002]).



Coomassie blue staining of purified SYNGR1 protein (Cat# [TP300562]). The protein was produced from HEK293T cells transfected with SYNGR1 cDNA clone (Cat# RC200562) using MegaTran 2.0 (Cat# [TT210002]).