

## Product datasheet for **RC200560**

### **TMEM147 (NM\_032635) Human Tagged ORF Clone**

#### Product data:

Product Type:	Expression Plasmids
Product Name:	TMEM147 (NM_032635) Human Tagged ORF Clone
Tag:	Myc-DDK
Symbol:	TMEM147
Synonyms:	NIFIE14
Vector:	pCMV6-Entry (PS100001)
E. coli Selection:	Kanamycin (25 ug/mL)
Cell Selection:	Neomycin
ORF Nucleotide Sequence:	>RC200560 ORF sequence Red=Cloning site Blue=ORF Green=Tags(s)

TTTTGTAATACGACTCACTATAGGGCGGCCGGAATTCGTCGACTGGATCCGGTACCGAGGAGATCTGCC  
GCC**CGATCGC**C

ATGACCCTGTTTCACTTCGGGAAGTCTTCGCTCTTGCCTACTTCCCCTACTTCATCACCTACAAGTGCA  
GCGGCCTGTCCGAGTACAAGCCTTCTGAAATGCGTCCAGGCTGGAGTACCTACCTCTTTGTCCAAC  
CTGCAAGATGCTGTTCTTGGCCACTTTCTTCCCACCTGGGAAGCGGCATCTATGACTTATTGGGGAG  
TTCATGAAGGCCAGCGTGGATGTGGCAGACCTGATAGGTCTAAACCTTGTATGTCCCGAATGCCGGCA  
AGGGAGAGTACAAGATCATGGTTGCTGCCCTGGGCTGGGCCACTGCTGAGCTTATTATGTCCCGCTGCAT  
TCCCCTATGGGTCCGAGCCCGGGCATTGAGTTTGAAGTACATCCAGATGAGCATAGACTCCAAC  
ATCAGTCTGGTCCATTACATCGTCGCGTCTGCTCAGGTCTGGATGATAACACGCTATGATCTGTACCACA  
CCTTCCGGCCAGCTGTCTCCTGCTGATGTTCTCAGTGTCTACAAGCCTTTGTTATGGAGACCTTCGT  
CCACCTCTGCTCGCTGGGCAGTTGGGCAGCTCTACTGGCCGAGCAGTGGTAACGGGGCTGCTGGCCCTC  
AGCACTTTGGCCCTGTATGTCGCCGTTGCAATGTGCACTCC

**ACGCGT**ACGCGGCCGCTCGAGCAGAACTCATCTCAGAAGAGGATCTGGCAGCAAATGATATCCTGGATT  
ACAAGGATGACGACGATAAGGTTTAA



[View online »](#)

Protein Sequence: >RC200560 protein sequence  
 Red=Cloning site Green=Tags(s)

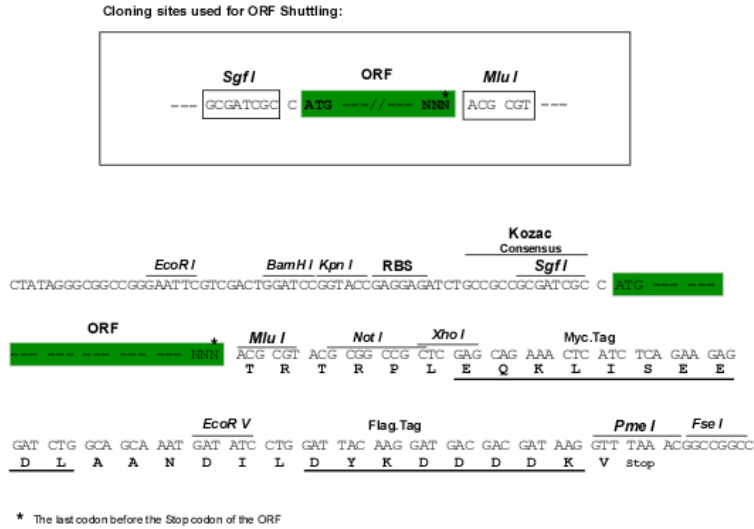
MTLFHFGNCFALAYFPYFITYKCSGLSEYNAFWKCVQAGVTYLFVQLCKMLFLATFFPTWEGGIYDFIGE  
 FMKASVDVADLIGLNLVMSRNAGKGEYKIMVAALGWATAELIMSRCIPLWVGARGIEFDWKYIQMSIDSN  
 ISLVHYIVASAQVWMITRYDLYHTFRP AVL LLMFLSVYKAFVME TFVHLCSLGSWAALLARAVVTGLLAL  
 STLALYVAVVNVHS

TRTRPLEQKLISEEDLAANDILDYKDDDDKV

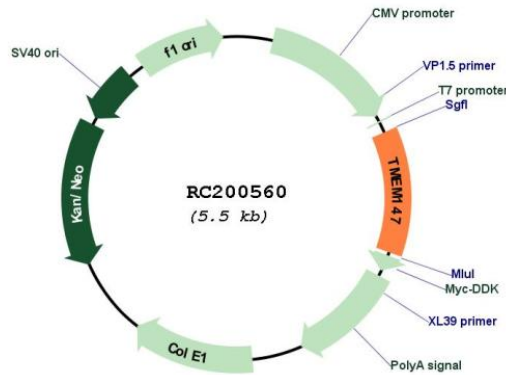
Chromatograms: [https://cdn.origene.com/chromatograms/mk6283\\_f06.zip](https://cdn.origene.com/chromatograms/mk6283_f06.zip)

Restriction Sites: SgfI-MluI

Cloning Scheme:



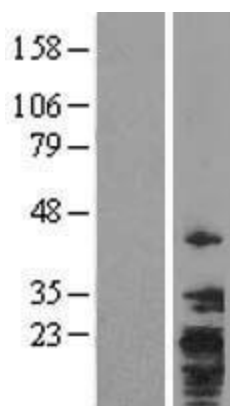
Plasmid Map:



ACCN: NM\_032635  
 ORF Size: 672 bp

<b>OTI Disclaimer:</b>	The molecular sequence of this clone aligns with the gene accession number as a point of reference only. However, individual transcript sequences of the same gene can differ through naturally occurring variations (e.g. polymorphisms), each with its own valid existence. This clone is substantially in agreement with the reference, but a complete review of all prevailing variants is recommended prior to use. <a href="#">More info</a>
<b>OTI Annotation:</b>	This clone was engineered to express the complete ORF with an expression tag. Expression varies depending on the nature of the gene.
<b>RefSeq:</b>	<a href="#">NM_032635.4</a>
<b>RefSeq Size:</b>	909 bp
<b>RefSeq ORF:</b>	675 bp
<b>Locus ID:</b>	10430
<b>UniProt ID:</b>	<a href="#">Q9BVK8</a>
<b>Protein Families:</b>	Druggable Genome, GPCR, Transmembrane
<b>MW:</b>	25.3 kDa
<b>Gene Summary:</b>	Acts as a negative regulator of CHRM3 function, most likely by interfering with its trafficking to the cell membrane (PubMed:21056967). Negatively regulates CHRM3-mediated calcium mobilization and activation of RPS6KA1/p90RSK activity (PubMed:21056967). [UniProtKB/Swiss-Prot Function]

### Product images:



Western blot validation of overexpression lysate (Cat# [LY409991]) using anti-DDK antibody (Cat# [TA50011-100]). Left: Cell lysates from untransfected HEK293T cells; Right: Cell lysates from HEK293T cells transfected with RC200560 using transfection reagent MegaTran 2.0 (Cat# [TT210002]).