

## Product datasheet for **RC200558**

### TUSC2 (NM\_007275) Human Tagged ORF Clone

#### Product data:

**Product Type:** Expression Plasmids  
**Product Name:** TUSC2 (NM\_007275) Human Tagged ORF Clone  
**Tag:** Myc-DDK  
**Symbol:** TUSC2  
**Synonyms:** C3orf11; FUS1; PAP; PDAP2  
**Vector:** pCMV6-Entry (PS100001)  
**E. coli Selection:** Kanamycin (25 ug/mL)  
**Cell Selection:** Neomycin  
**ORF Nucleotide Sequence:** >RC200558 ORF sequence  
Red=Cloning site Blue=ORF Green=Tags(s)

TTTTGTAATACGACTCACTATAGGGCGGCCGGAATTCGTCGACTGGATCCGGTACCGAGGAGATCTGCC  
GCC**CGGATCGCC**

ATGGGCGCCAGCGGGTCCAAGCTCGGGCCTGTGGCCCTTCGCCTCGGCGGCCGGAGGCGGGCTCAG  
AGGCAGCAGGAGCTGAGCAAGCTTTGGTGGCCCTCGGGCCGAGCTGTGCCCCCTTCGTATTCACGCG  
CCGCGGCTCTATGTTCTATGATGAGGATGGGGATCTGGCTCACGAGTTCTATGAGGAGACAATCGTCACC  
AAGAACGGGCAGAAGCGGGCCAAGCTGAGGCGAGTGCATAAGAATCTGATTCCTCAGGGCATCGTGAAGC  
TGGATCACCCCGCATCCACGTGGATTTCCCTGTGATCCTCTATGAGGTG

**ACGCGT**ACGCGGCCGCTCGAGCAGAACTCATCTCAGAAGAGGATCTGGCAGCAAATGATATCCTGGATT  
ACAAGGATGACGACGATAAGGTTTAA

**Protein Sequence:** >RC200558 protein sequence  
Red=Cloning site Green=Tags(s)

MGASGSKARGLWPFASAAGGGSEAAAGAEQALVRPRGRAVPPVFVTRRGSMFYDEDGDLAHEFYEETIVT  
KNGQKRAKLRRVHKNLIPQGIVKLDHPRIHVDFPVILYEV

**TR**TRPLEQK**L**I**SEEDLA**ND**ILDYK**DDDDK**V**

**Chromatograms:** [https://cdn.origene.com/chromatograms/mk6064\\_d09.zip](https://cdn.origene.com/chromatograms/mk6064_d09.zip)

**Restriction Sites:** Sgfl-MluI

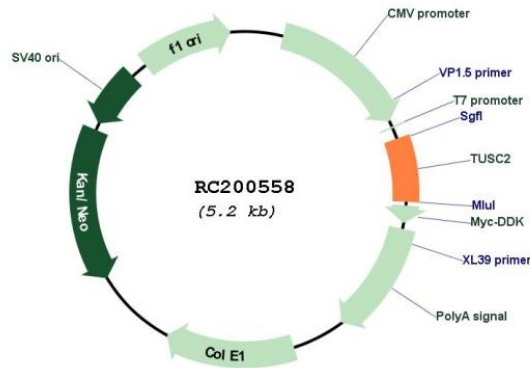


View online »

Cloning Scheme:



Plasmid Map:



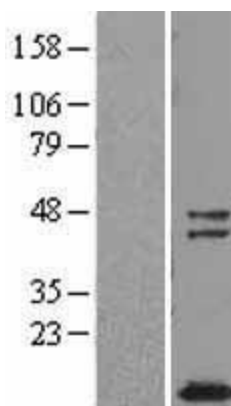
ACCN: NM\_007275

ORF Size: 330 bp

OTI Disclaimer: The molecular sequence of this clone aligns with the gene accession number as a point of reference only. However, individual transcript sequences of the same gene can differ through naturally occurring variations (e.g. polymorphisms), each with its own valid existence. This clone is substantially in agreement with the reference, but a complete review of all prevailing variants is recommended prior to use. [More info](#)

OTI Annotation:	This clone was engineered to express the complete ORF with an expression tag. Expression varies depending on the nature of the gene.
RefSeq:	<a href="#">NM_007275.2</a>
RefSeq Size:	1705 bp
RefSeq ORF:	333 bp
Locus ID:	11334
UniProt ID:	<a href="#">O75896</a>
Protein Families:	Druggable Genome
MW:	12.1 kDa
Gene Summary:	This gene is a highly conserved lung cancer candidate gene. No other information about this gene is currently available. [provided by RefSeq, Jul 2008]

### Product images:



Western blot validation of overexpression lysate (Cat# [LY416060]) using anti-DDK antibody (Cat# [TA50011-100]). Left: Cell lysates from untransfected HEK293T cells; Right: Cell lysates from HEK293T cells transfected with RC200558 using transfection reagent MegaTran 2.0 (Cat# [TT210002]).