

Product datasheet for **RC200557**

AP1S1 (NM_057089) Human Tagged ORF Clone

Product data:

Product Type: Expression Plasmids
Product Name: AP1S1 (NM_057089) Human Tagged ORF Clone
Tag: Myc-DDK
Symbol: AP1S1
Synonyms: AP19, CLAPS1, SIGMA1A
Mammalian Cell Selection: Neomycin
Vector: pCMV6-Entry (PS100001)
E. coli Selection: Kanamycin (25 ug/mL)
ORF Nucleotide Sequence: >RC200557 ORF sequence
 Red=Cloning site Blue=ORF Green=Tags(s)

TTTTGTAATACGACTCACTATAGGGCGGCCGGAATTCGTCGACTGGATCCGGTACCGAGGAGATCTGCC
 GCC**CGATCGCC**

ATGATGCGGTTTCATGCTATTATTCAGCCGGCAGGGAAAACGCGGCTGCAAAAATGGTACCTGGCCACTT
 CGGACAAGGAACGGAAGAAGATGGTGCAGCTCATGCAGGTTGTCTGGCTCGAAAGCCCAAGATGTG
 CAGCTTCTGGAGTGGAGGGACCTCAAAGTTGTCTATAAGAGATATGCCAGCCTCTACTTCTGCTGCGCC
 ATCGAGGGCCAAGACAATGAGCTCATCAGCTGGAGCTGATCCACCGATACGTGGAGCTCTAGACAAAT
 ACTTTGGCAGTGTGTGCGAGCTGGACATCATCTCAACTTTGAGAAGGCCTACTTCATCCTGGATGAGTT
 TTTGATGGGGGGGATGTCCAGGACACCTCCACTTTCCCTTTTCCAC

ACGCGTACGCGGCCGCTCGAGCAGAAACTCATCTCAGAAGAGGATCTGGCAGCAAATGATATCCTGGATT
 ACAAGGATGACGACGATAAGGTTTAA

Protein Sequence: >RC200557 protein sequence
 Red=Cloning site Green=Tags(s)
 MMRFMLLFSRQGLRLQKWYLATSDKERKMKVRELMQVVLARKPKMCSFLEWRDLKVYKRYASLYFCCA
 IEGQDNELITLELIHRYVELLDKYFGSVCELDIIFNFEKAYFILDEFMGGDVQDTSTFPFSH

TRTRPLEQKLISEEDLAANDILDYKDDDDKV

Chromatograms: https://cdn.origene.com/chromatograms/mk6392_d09.zip

Restriction Sites: Sgfl-MluI



[View online »](#)

Cloning Scheme:


ACCN: NM_057089

ORF Size: 399 bp

OTI Disclaimer: The molecular sequence of this clone aligns with the gene accession number as a point of reference only. However, individual transcript sequences of the same gene can differ through naturally occurring variations (e.g. polymorphisms), each with its own valid existence. This clone is substantially in agreement with the reference, but a complete review of all prevailing variants is recommended prior to use. [More info](#)

OTI Annotation: This clone was engineered to express the complete ORF with an expression tag. Expression varies depending on the nature of the gene.

Components: The ORF clone is ion-exchange column purified and shipped in a 2D barcoded Matrix tube containing 10ug of transfection-ready, dried plasmid DNA (reconstitute with 100 ul of water).

- Reconstitution Method:**
1. Centrifuge at 5,000xg for 5min.
 2. Carefully open the tube and add 100ul of sterile water to dissolve the DNA.
 3. Close the tube and incubate for 10 minutes at room temperature.
 4. Briefly vortex the tube and then do a quick spin (less than 5000xg) to concentrate the liquid at the bottom.
 5. Store the suspended plasmid at -20°C. The DNA is stable for at least one year from date of shipping when stored at -20°C.

Note: Plasmids are not sterile. For experiments where strict sterility is required, filtration with 0.22um filter is required.

RefSeq: [NM_057089.2](#)

RefSeq Size: 1079 bp

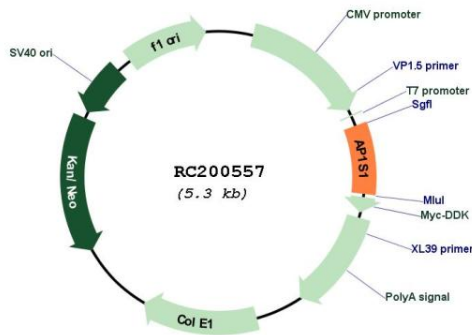
RefSeq ORF: 401 bp

Locus ID: 1174
Cytogenetics: 7q22.1
Protein Families: Druggable Genome

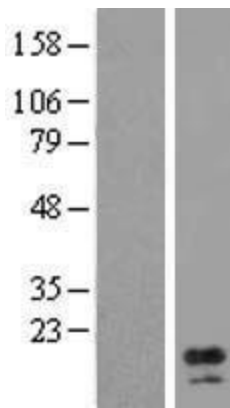
Protein Pathways: Lysosome
MW: 16 kDa

Gene Summary: The protein encoded by this gene is part of the clathrin coat assembly complex which links clathrin to receptors in coated vesicles. These vesicles are involved in endocytosis and Golgi processing. This protein, as well as beta-prime-adaptin, gamma-adaptin, and the medium (mu) chain AP47, form the AP-1 assembly protein complex located at the Golgi vesicle. [provided by RefSeq, Jul 2008]

Product images:



Circular map for RC200557



Western blot validation of overexpression lysate (Cat# [LY409291]) using anti-DDK antibody (Cat# [TA50011-100]). Left: Cell lysates from untransfected HEK293T cells; Right: Cell lysates from HEK293T cells transfected with RC200557 using transfection reagent MegaTran 2.0 (Cat# [TT210002]).