

Product datasheet for RC200555

CRTAP (NM_006371) Human Tagged ORF Clone

Product data:

Product Type:	Expression Plasmids
Product Name:	CRTAP (NM_006371) Human Tagged ORF Clone
Tag:	Myc-DDK
Symbol:	CRTAP
Synonyms:	CASP; LEPREL3; OI7; P3H5
Mammalian Cell Selection:	Neomycin
Vector:	pCMV6-Entry (PS100001)
E. coli Selection:	Kanamycin (25 ug/mL)
ORF Nucleotide Sequence:	>RC200555 ORF sequence Red=Cloning site Blue=ORF Green=Tags(s)

TTTTGTAATACGACTCACTATAGGGCGGCCGGAATTCGTCGACTGGATCCGGTACCGAGGAGATCTGCC
GCC**CGATCGCC**

ATGGAGCCGGGGCGCCGGGGGGCCGGCGCTGCTAGCGCTGCTGTGCGTGGCCTGCGCGCTGCGCGCCG
GGCGCGCCAATACGAACGCTACAGCTTCCGAGCTTCCACGGGACGAGCTGATGCCGCTCGAGTCGGC
CTACCGGCACGCGCTGGACAAGTACAGCGGCGAGCACTGGGCCGAGAGCGTGGGTACCTGGAGATCAGC
CTGCGGCTGCACCGCTTGTGCGGACAGCGAGGCCTTCTGCCACCGCAACTGCAGCGCCGCGCCGAGC
CCGAGCCCGCCGGCCTCGCCAGCTATCCCGAGCTGCGCCTTCTCGGGGCTGCTGCGCCGCGCGCA
CTGCTCAAGCGCTGCAAGCAGGCTGCCAGCCTTCCGCCAGTCCCAGCCAGCCGCGATGTGCTGGCG
GACTTCCAGCGCCGCGAGCCCTACAAGTTCCTGCAAGTTCGCTTACTTCAAGGCAAATAATCTCCCAAAG
CCATCGCCGCTGCTCACACCTTTCTACTGAAGCATCCTGATGACGAAATGATGAAGAGGAACATGGCATA
TTATAAGAGCCTGCCTGGTGCCGAGGACTACATTAAGACCTGGAACCAAGTCATATGAAAGCCTGTTC
ATCCGAGCAGTGGCGCATACAACGGTGAAGTGGAGAACATCCATCACAGACATGGAGCTGGCCCTTC
CCGACTTCTTCAAAGCCTTTACGAGTGTCTCGAGCCTGCGAGGTTCCAGGGAGATCAAGGACTTCAA
GGATTTCTACCTTCCATAGCAGATCATTATGTAGAAGTCTGGAATGCAAAATACAGTGTGAAGAGAAC
CTCACCCAGTTATAGGAGGCTATCCGGTTGAGAAATTTGTGGCTACCATGTATCATTACTGCAAGTTG
CCTATTATAAGTTGAACGACCTGAAGAATGCAGCCCCCTGTGAGTCAAGTATCTGCTCTTTGCAGAA
TGACAAGTTCATGCAGCAGAACCTGGTGTATTACCAGTACCACAGGGACACGTGGGGCTCTCAGATGAG
CACTTCCAGCCAGACCTGAAGCAGTTCAGTCTTTAATGTGACCACACTCCAGAAGGAGCTGTATGACT
TTGCTAAGGAAAATAAATGGATGATGATGAGGGAGAAGTTGTGGAATATGTGGATGACCTCTTGAAGT
GGAGGAGACCAGC

ACGCGTACGCGGCGCTCGAGCAGAAACTCATCTCAGAAGAGGATCTGGCAGCAAATGATATCCTGGATT
ACAAGGATGACGACGATAAGGTTTAA



[View online »](#)

Protein Sequence: >RC200555 protein sequence
Red=Cloning site Green=Tags(s)

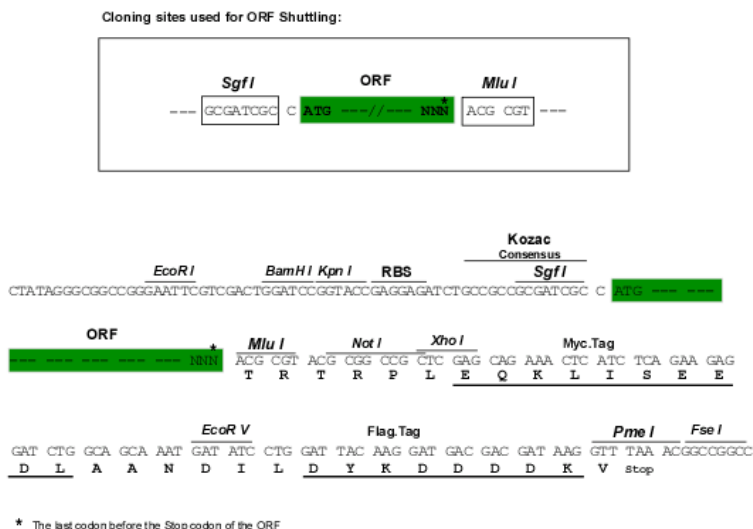
MEPGRRGAAALLALLCVACALRAGRAQYERYSFRRSFPDELMPLESAYRHALDKYSGEHWAESVGYLEIS
 LRLHRLLRDSEAFCHRNCSAAPQPEPAAGLASYPELRLFGLLRRAHCLKRCKQGLPAFRQSQPSRDVLA
 DFQRREPYKFLQFAYFKANNLPKAIAAAHTFLLKHPDDEMCKRMAYYKSLPGAEDYIKDLETKSYESLF
 IRAVRAYNGENWRTSITDMELALPDFFKAFYECLAACEGSRKIDKDFDFYLSIADHYVEVLECKIQCEEN
 LTPVIGGYPVEKFAVATMYHYLQFAYYKLNLDLKNAAPCAVSYLLFDQNDKVMQQNLVYYQYHRDTWGLSDE
 HFQPRPEAVQFFNVTTLQKELYDFAKENIMDDDEGEVVEYVDDLLELEETS

TRTRPLEQKLISEEDLAANDILDYKDDDDKV

Chromatograms: https://cdn.origene.com/chromatograms/mk6075_b09.zip

Restriction Sites: SgfI-MluI

Cloning Scheme:



ACCN: NM_006371

ORF Size: 1203 bp

OTI Disclaimer: The molecular sequence of this clone aligns with the gene accession number as a point of reference only. However, individual transcript sequences of the same gene can differ through naturally occurring variations (e.g. polymorphisms), each with its own valid existence. This clone is substantially in agreement with the reference, but a complete review of all prevailing variants is recommended prior to use. [More info](#)

OTI Annotation: This clone was engineered to express the complete ORF with an expression tag. Expression varies depending on the nature of the gene.

Components: The ORF clone is ion-exchange column purified and shipped in a 2D barcoded Matrix tube containing 10ug of transfection-ready, dried plasmid DNA (reconstitute with 100 ul of water).

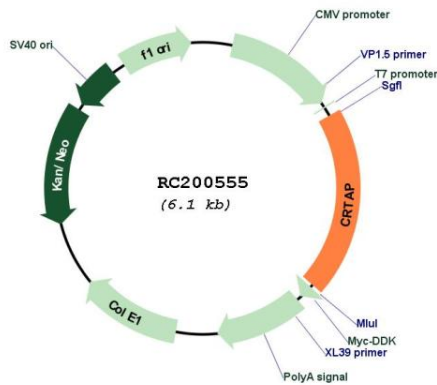
Reconstitution Method:

1. Centrifuge at 5,000xg for 5min.
2. Carefully open the tube and add 100ul of sterile water to dissolve the DNA.
3. Close the tube and incubate for 10 minutes at room temperature.
4. Briefly vortex the tube and then do a quick spin (less than 5000xg) to concentrate the liquid at the bottom.
5. Store the suspended plasmid at -20°C. The DNA is stable for at least one year from date of shipping when stored at -20°C.

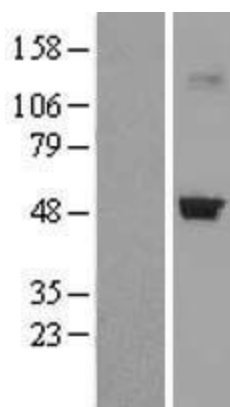
RefSeq: [NM_006371.5](#)
RefSeq Size: 6668 bp
RefSeq ORF: 1206 bp
Locus ID: 10491
UniProt ID: [O75718](#)
Cytogenetics: 3p22.3
Protein Families: Secreted Protein, Transmembrane
MW: 46.5 kDa

Gene Summary: The protein encoded by this gene is similar to the chicken and mouse CRTAP genes. The encoded protein is a scaffolding protein that may influence the activity of at least one member of the cytohesin/ARNO family in response to specific cellular stimuli. Defects in this gene are associated with osteogenesis imperfecta, a connective tissue disorder characterized by bone fragility and low bone mass. [provided by RefSeq, Jul 2008]

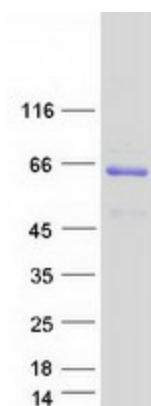
Product images:



Circular map for RC200555



Western blot validation of overexpression lysate (Cat# [LY416690]) using anti-DDK antibody (Cat# [TA50011-100]). Left: Cell lysates from untransfected HEK293T cells; Right: Cell lysates from HEK293T cells transfected with RC200555 using transfection reagent MegaTran 2.0 (Cat# [TT210002]).



Coomassie blue staining of purified CRTAP protein (Cat# [TP300555]). The protein was produced from HEK293T cells transfected with CRTAP cDNA clone (Cat# RC200555) using MegaTran 2.0 (Cat# [TT210002]).