

Product datasheet for **RC200553**

PRICKLE3 (NM_006150) Human Tagged ORF Clone

Product data:

Product Type:	Expression Plasmids
Product Name:	PRICKLE3 (NM_006150) Human Tagged ORF Clone
Tag:	Myc-DDK
Symbol:	PRICKLE3
Synonyms:	LMO6; LOAM; Pk3
Mammalian Cell Selection:	Neomycin
Vector:	pCMV6-Entry (PS100001)
E. coli Selection:	Kanamycin (25 ug/mL)



[View online »](#)

ORF Nucleotide Sequence:

>RC200553 ORF sequence
 Red=Cloning site Blue=ORF Green=Tags(s)

TTTTGTAATACGACTCACTATAGGGCGGCCGGGAATTCGTGACTGGATCCGGTACCGAGGAGATCTGCC
 GCC**CGGATCGCC**

ATGTTTCGCGCTGGGTCCCGAGGCGCCGCTCCGGCGTGCCTCCAGAGGCAGAGACCAGACCGGG
 GCCAGCCCTGCAACTCCTGTAGGGAGCAGTGCCCTGGCTTCTGTCTCACGGCTGGAGAAAGATCTGCCA
 GCATTGCAAAATGCCCGGGAGGAGCATGCAGTGCACGCGGTGCCTGTGGACCTGGAAACGCATCATGTGT
 CGGCTAATCTCGGACTTCCAGCGCCACTCCATCTCCGACGACGACTCAGGCTGTGCATCGGAGGAGTATG
 CCTGGGTGCCCCAGGCCTTAAGCCGGAGCAGGTATATCAATTTTTTCAGCTGCCTCCAGAGGACAAGGT
 CCCCTACGTCAACAGTCTGGGGAGAAATACAGGATCAAGCAGCTGCTGCACCAGCTGCCCCACACGAC
 AGTGAGGCACAGTACTGCACAGCACTGGAAGAGGAGGAAAAGAAAGAGCTCCGAGCCTTTAGCCAGCAGC
 GGAAGCGGGAGAATCTGGGGCGTGGCATCGTGCATCTTCCCGGTGACCATCACTGGGGCCATCTGTGA
 GGAGTGGCGAAAGCAGATTGGAGGTGGGACATCGCAGTGTGGCCAGCCGTGCAGGCCTGGGTGCCTGC
 TGGCACCCACAGTGTTCGTGTGTACCACGTGCCAGGAAGTGTGGTTGACCTCATCTACTTCTACCATG
 TTGGCAAGGTCTACTGCGGGCGTACCATGCCGAATGCCTGCGTCCACGCTGCCAAGCCTGTGACGAGAT
 CATCTTCTCCCCTGAGTGCACGGAGGCTGAGGGCCGCACTGGCAGATGGATCACTTCTGTCTGTTTGG
 TGTGAAGCTTCACTAGGAGGGCAGCGCTATGTCATGCGTCAGAGCCGCCCCCACTGCTGCGCCTGCTACG
 AGGCCCGCCACGCGGAGTACTGTGATGGCTGTGGGGAGCACATCGGCCTGGACCAAGGCCAGATGGCTTA
 CGAGGGCCAGCACTGGCATGCCCTCAGACCGCTGCTTCTGTGTAGTCGCTGTGGGCGGCCCTGCTGGGC
 CGCCCATCTCTGCCACGCGGAGGCCTAATCTTCTGCTCTCGAGCCTGCAGCCTTGGTCCGAGCCACAG
 CTTCCAGGGCCGAGCCCGCAGCTGGAGTGGCGGCCCTGTACAGCCCCACTTGCAGCCTCCACAGCCTC
 TTTCTCTGCTGTGAAGGGGGCATCAGAGACCACCAAAAGGCACCAGCACAGAGTTAGCGCCAGCTACA
 GGCCCTGAGGAGCCCTCCGCTTCTGAGAGGGGCTCCCAACCGCACTCCATGCCGGAAGTGGGCTCC
 GCAGTGTCCCGAGCCGCCCCAGAGTCCCGCGCCAGCCTAACCTGCGCCAGATGATAGTGCCTTCGG
 TCGTCAGAGCACCCACGCGTCACTTCCGCGACCCTCTGGTGTCTGAAGGAGGCCCGCGCCGACCCCTG
 AGTGCACCCCGGCCAGCGCCGAGGCCACGAGTCCCCACCCAGGGCCCCAGCCGTCGCGCCACC
 ATCATATAATCACCATCACCATACAACCGCCACCAAGCAGACGTGCCACTATCAATGTGACGCGGG
 ATCAGGGTCAGACTCGGAATCTTGTCCAGCTCGCCCTCCAGTTCAGTTCGAATCATCAGAGGATGAT
 GGCTTCTTCTAGGAGAGCGCATCCCTCTGCCCCGCATTTGTGCAGGCCATGCCTGCTCAGGACTG
 CAATGGAGACCTTCAACTCCCCATCTTTATCGCTCCCCAGGGACTCTCGGCAGGGATGCCTCGTACGGC
 CCGAGACAAGAACTGCATCGTGGCT

AG**CGGACCG**ACGCGTACGCGGCCGCTCGAGCAGAAACTCATCTCAGAAGAGGATCTGGCAGCAAATGATATCC
 TGGATTACAAGGATGACGACGATAAGGTTTAA

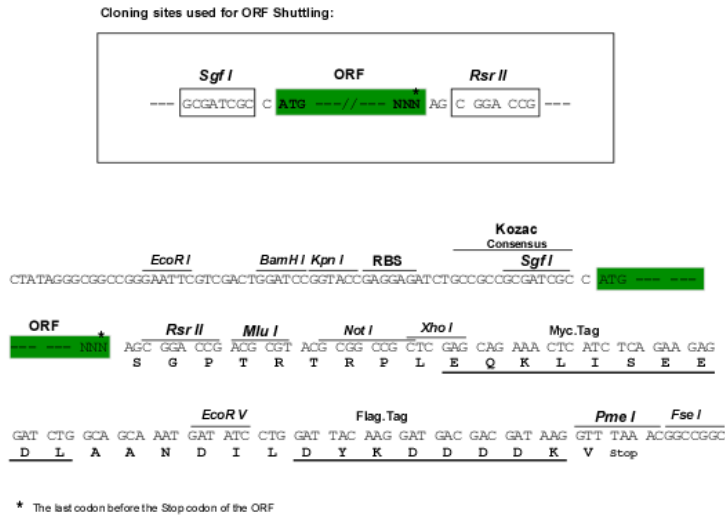
Protein Sequence:

>RC200553 protein sequence
 Red=Cloning site Green=Tags(s)

MFARGSRRRRSGRAPPEAEDPDRGQPCNSCREQC PGFLLHGWRKICQHCKCPREEHAVHAVPVDLERIMC
 RLISDFQRHSISDDSGCASEEYAWVPPGLKPEQVYQFFSCLPEDKVPYVNSPGEKYRIKQLLHQLPPHD
 SEAQYCTALEEEEKELRAFSQQRKRENLRGIVRIFPVTITGAICECGKQIGGGDI AVFASRAGLGAC
 WHPQCFVCTTCQELLVDLIYFYHVGVYVYGRHHAELRPRCQACDEIIF SPECTEAEGRHWHMDHFCFFE
 CEASLGGQRYVMRQSRPHCCACYEARHAEYCDGCGEHI GLDQGMAYEQHWHASDRCFCCSRCGRALLG
 RPFLLRRGLIFCSRACSLGSEPTAPGPSRRSWSAGPVTAPLAAS TASFSAVKGASETTTKGTSTELAPAT
 GPEEPSRFLRGAPHRHSMPELGLRSVPEPPPE SPGQPNLRPDDSAFGRQSTPRVSRFDPLVSEGGPRRTL
 SAPPAQRRRRSPPPRAPSRRRHHHHHHHHNRHPSRRRH YQCDAGSGSDSESCSSSSPSSSESSEDD
 GFFLGERIPLPPLCRPMPAQDTAMETFNSPSLSLPRDSRAGMPRQARDKNCIVA

SGP**TRTRPLEQKLI**SEEDLAANDILDYKDDDDK**V**

Chromatograms: https://cdn.origene.com/chromatograms/mk6618_g08.zip
Restriction Sites: SgfI-RsrII
Cloning Scheme:



ACCN: NM_006150

ORF Size: 1845 bp

OTI Disclaimer: The molecular sequence of this clone aligns with the gene accession number as a point of reference only. However, individual transcript sequences of the same gene can differ through naturally occurring variations (e.g. polymorphisms), each with its own valid existence. This clone is substantially in agreement with the reference, but a complete review of all prevailing variants is recommended prior to use. [More info](#)

OTI Annotation: This clone was engineered to express the complete ORF with an expression tag. Expression varies depending on the nature of the gene.

Components: The ORF clone is ion-exchange column purified and shipped in a 2D barcoded Matrix tube containing 10ug of transfection-ready, dried plasmid DNA (reconstitute with 100 ul of water).

Reconstitution Method:

1. Centrifuge at 5,000xg for 5min.
2. Carefully open the tube and add 100ul of sterile water to dissolve the DNA.
3. Close the tube and incubate for 10 minutes at room temperature.
4. Briefly vortex the tube and then do a quick spin (less than 5000xg) to concentrate the liquid at the bottom.
5. Store the suspended plasmid at -20°C. The DNA is stable for at least one year from date of shipping when stored at -20°C.

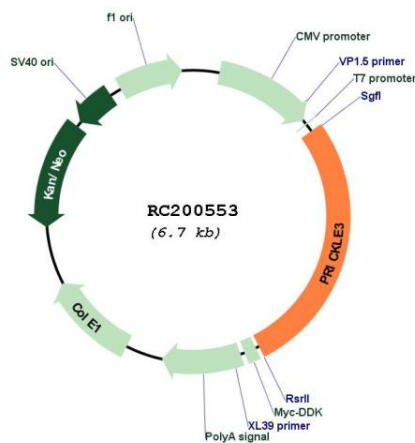
Note: Plasmids are not sterile. For experiments where strict sterility is required, filtration with 0.22um filter is required.

RefSeq: [NM_006150.5](#)

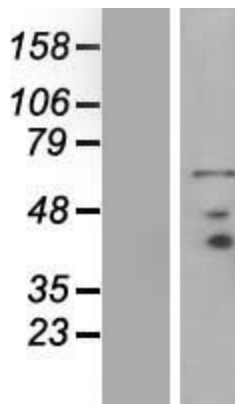
RefSeq Size: 1990 bp

RefSeq ORF:	1848 bp
Locus ID:	4007
UniProt ID:	<u>O43900</u>
Cytogenetics:	Xp11.23
Domains:	LIM
MW:	68.6 kDa
Gene Summary:	LIM domain only 6 is a three LIM domain-containing protein. The LIM domain is a cysteine-rich sequence motif that binds zinc atoms to form a specific protein-binding interface for protein-protein interactions. [provided by RefSeq, Jul 2008]

Product images:



Circular map for RC200553



Western blot validation of overexpression lysate (Cat# [LY416837]) using anti-DDK antibody (Cat# [TA50011-100]). Left: Cell lysates from untransfected HEK293T cells; Right: Cell lysates from HEK293T cells transfected with RC200553 using transfection reagent MegaTran 2.0 (Cat# [TT210002]).