

## Product datasheet for **RC200543**

### LDOC1 (NM\_012317) Human Tagged ORF Clone

#### Product data:

**Product Type:** Expression Plasmids  
**Product Name:** LDOC1 (NM\_012317) Human Tagged ORF Clone  
**Tag:** Myc-DDK  
**Symbol:** LDOC1  
**Synonyms:** BCUR1; Mar7; Mart7; RTL7; SIRH7  
**Mammalian Cell Selection:** Neomycin  
**Vector:** pCMV6-Entry (PS100001)  
**E. coli Selection:** Kanamycin (25 ug/mL)  
**ORF Nucleotide Sequence:** >RC200543 ORF sequence  
Red=Cloning site Blue=ORF Green=Tags(s)

TTTTGTAATACGACTCACTATAGGGCGGCCGGAATTCGTCGACTGGATCCGGTACCGAGGAGATCTGCC  
GCC**CGATCGCC**

ATGGTGGATGAGTTGGTGTCTGCTGCTGCACGCGCTCCTGATGCGGCACCGCGCCCTGAGCATCGAGAACA  
GCCAGCTCATGGAACAGCTGCGGCTGCTGGTGTGCGAGAGGGCCAGCCTGCTGCGCCAGGTACGTCCGCC  
GAGCTGCCGGTGCCTTCCCCGAAACGTTTAATGGCGAGAGCTCCCGGCTCCCCGAGTTTATCGTGCAG  
ACGGCGTCTTACATGCTCGTGAACGAGAACCGATTCTGCAACGACGCCATGAAGGTGGCATTCTAATCA  
GCCTCTCACCGGGAAGCCGAGGAGTGGTGGTCCCTACATCGAGATGGATAGCCCCATCCTAGGTGA  
TTACCGGGCCTTCTCGATGAGATGAAACAGTCTTTGGTGGGATGACGACGAAGACGACGACGACGAA  
GAAGAGGAGGATGATTAT

**ACGCGT**ACGCGGCCGCTCGAGCAGAACTCATCTCAGAAGAGGATCTGGCAGCAAATGATATCCTGGATT  
ACAAGGATGACGACGATAAGGTTTAA

**Protein Sequence:** >RC200543 protein sequence  
Red=Cloning site Green=Tags(s)  
MVDELVLLLHALLMRHRALSIENSQLMQLRLLVCERASLLRQVRPPSPVPFPETFNCESSRLEPFIVQ  
TASYMLVNENRFENDAMKVAFLISLLTGEAEVWPYIEMDSPILGDYRAFLDEMKGQCFGWDDDEDDDDDE  
EEEDDY

**TRTRPLEQKLI**SEEDLAANDILDYKDDDDKV

**Chromatograms:** [https://cdn.origene.com/chromatograms/mk6080\\_f05.zip](https://cdn.origene.com/chromatograms/mk6080_f05.zip)



[View online >](#)

Restriction Sites: SgfI-MluI

Cloning Scheme:



ACCN: NM\_012317

ORF Size: 438 bp

OTI Disclaimer: The molecular sequence of this clone aligns with the gene accession number as a point of reference only. However, individual transcript sequences of the same gene can differ through naturally occurring variations (e.g. polymorphisms), each with its own valid existence. This clone is substantially in agreement with the reference, but a complete review of all prevailing variants is recommended prior to use. [More info](#)

OTI Annotation: This clone was engineered to express the complete ORF with an expression tag. Expression varies depending on the nature of the gene.

Components: The ORF clone is ion-exchange column purified and shipped in a 2D barcoded Matrix tube containing 10ug of transfection-ready, dried plasmid DNA (reconstitute with 100 ul of water).

- Reconstitution Method:
1. Centrifuge at 5,000xg for 5min.
  2. Carefully open the tube and add 100ul of sterile water to dissolve the DNA.
  3. Close the tube and incubate for 10 minutes at room temperature.
  4. Briefly vortex the tube and then do a quick spin (less than 5000xg) to concentrate the liquid at the bottom.
  5. Store the suspended plasmid at -20°C. The DNA is stable for at least one year from date of shipping when stored at -20°C.

RefSeq: [NM\\_012317.4](#)

RefSeq Size: 1470 bp

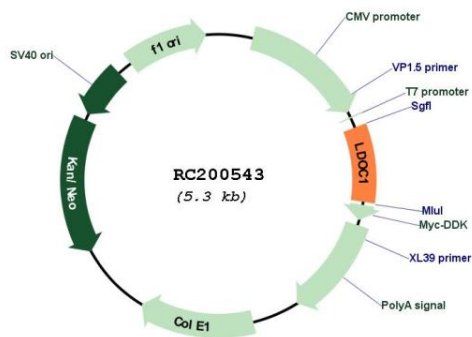
RefSeq ORF: 441 bp

Locus ID: 23641

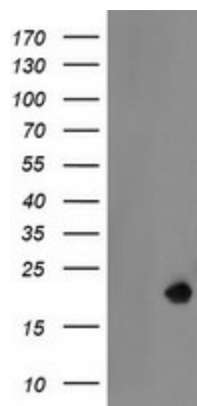
UniProt ID: [O95751](#)  
 Cytogenetics: Xq27.1  
 MW: 17 kDa

**Gene Summary:** The protein encoded by this gene contains a leucine zipper-like motif and a proline-rich region that shares marked similarity with an SH3-binding domain. The protein localizes to the nucleus and is down-regulated in some cancer cell lines. It is thought to regulate the transcriptional response mediated by the nuclear factor kappa B (NF-kappaB). The gene has been proposed as a tumor suppressor gene whose protein product may have an important role in the development and/or progression of some cancers. [provided by RefSeq, Jul 2008]

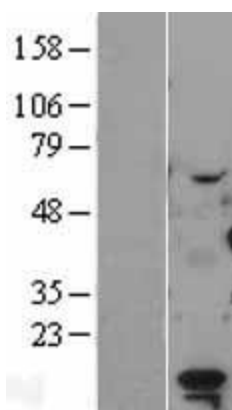
**Product images:**



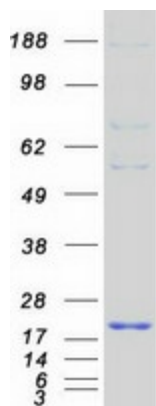
Circular map for RC200543



HEK293T cells were transfected with the pCMV6-ENTRY control (Cat# [PS100001], Left lane) or pCMV6-ENTRY LDOC1 (Cat# RC200543, Right lane) cDNA for 48 hrs and lysed. Equivalent amounts of cell lysates (5 ug per lane) were separated by SDS-PAGE and immunoblotted with anti-LDOC1 (Cat# [TA505057]). Positive lysates [LY402194] (100ug) and [LC402194] (20ug) can be purchased separately from OriGene.



Western blot validation of overexpression lysate (Cat# [LY402194]) using anti-DDK antibody (Cat# [TA50011-100]). Left: Cell lysates from untransfected HEK293T cells; Right: Cell lysates from HEK293T cells transfected with RC200543 using transfection reagent MegaTran 2.0 (Cat# [TT210002]).



Coomassie blue staining of purified LDOC1 protein (Cat# [TP300543]). The protein was produced from HEK293T cells transfected with LDOC1 cDNA clone (Cat# RC200543) using MegaTran 2.0 (Cat# [TT210002]).