

Product datasheet for **RC200542**

ZNF202 (NM_003455) Human Tagged ORF Clone

Product data:

Product Type:	Expression Plasmids
Product Name:	ZNF202 (NM_003455) Human Tagged ORF Clone
Tag:	Myc-DDK
Symbol:	ZNF202
Synonyms:	ZKSCAN10; ZSCAN42
Mammalian Cell Selection:	Neomycin
Vector:	pCMV6-Entry (PS100001)
E. coli Selection:	Kanamycin (25 ug/mL)



[View online »](#)

ORF Nucleotide
Sequence:

>RC200542 ORF sequence
Red=Cloning site Blue=ORF Green=Tags(s)

TTTTGTAATACGACTCACTATAGGGCGGCCGGAATTCGTCGACTGGATCCGGTACCGAGGAGATCTGCC
GCCGCGATCGCC

ATGGCTACAGCCGTGGAACCAGAGGACCAGGATCTTTGGGAAGAAGAGGGAATTCTGATGGTGAACTGG
AAGATGATTTACCTGTCGGCCAGAGTCTGTCTTACAGAGGGATGACCCGGTGTGGAAACCTCCCACCA
GAACTTCCGACGCTTCCGCTACCAGGAGCAGCAAGCCCTAGAGAAGCTCTCATCAGACTCCGAGAATT
TGTACCAGTGGCTGAGACCAGAGAGCGGACAAAGGAGCAGATCCTAGAGCTGCTTGTGCTGGAACAAT
TTCTTACCCTCTACCTGGAGAACTACAGAGCTGGGTGCGGGGCCAACGGCCAGAAAAGTGGCAGGAGGC
AGTGACGCTGGTGGAGGTTTGCAGAAACAACCCAGGAGACCAAGGCGGTGGGTGACTGTCCATGTTTAC
GGCCAGGAAGTCTGTGAGAGGAGACGGTGCATTTAGGAGCGGAGCCTGAGTCACCTAATGAGCTGCAGG
ATCCTGTGCAAAGCTCGACCCCGAGCAGTCTCCTGAGGAAACCACAGAGCCAGATCTGGGGCACC
GGCAGAGCAGCGTCCACACCAGGAAGAGGAGCTCCAGACCCTGCAGGAGAGCGAGTCCCAGTGGCCGAG
GACCCAGACCTTCTGCAGAGAGGAGCTCTGGAGACTCAGAGATGGTTGCTCTTCTACTGCTCTGTCCAC
AGGGACTGGTAACGTTCAAGGATGTGGCCGTATGCTTTTCCCAGGACCAGTGGAGTGATCTGGACCAAC
ACAGAAAGAGTTCTATGGAGAATATGTCTTGAAGAAGACTGTGGAATTGTTGTCTCTGTGATTTCCA
ATCCCCAGACCTGATGAGATCTCCAGGTTAGAGAGGAAGAGCCTTGGGTCCCAGATATCCAAGAGCCTC
AGGAGACTCAAGAGCCAGAAATCCTGAGTTTTACCTACACAGGAGATAGGAGTAAAGATGAGGAAGAGTG
TCTGGAGCAGGAAGATCTGAGTTTGGAGGATATACACAGGCTGTTTTGGGAGAACCAGAAATTCACCAG
ACTCCAGATTGGGAAATAGTCTTTGAGGACAATCCAGGTAGACTTAATGAAAGAAGATTTGGTACTAATA
TTTCTCAAGTGAATAGTTTTGTGAACCTTCGGGAAACTACACCCGTCACCCCTGTTAGGAGGCATCA
TGACTGTTCTGTGTGGAAAGAGCTTCACTTGTAACTCCACCTTGTAGACACCTGAGGACTCACACA
GGAGAGAAACCCTATAAATGTATGGAATGTGAAAAAGTTACACACGAAGCTCACATCTTGCCAGGCACC
AAAAGGTTCAACAAGTGAACGCGCTTACAAATATCCCCTAAACCGGAAGAATTTGGAAGAGACCTCCCC
TGTGACACAGGCTGAGAGAACTCCATCAGTGGAGAAACCCTATAGATGTGATGATTGCGGAAAGCACTTC
CGCTGGACTTCAGACCTTGTGAGACATCAGAGGACACATACTGGAGAAAAACCCTTCTTTTGTACTATTT
GTGGCAAAGCTTCAGCCAGAAATCTGTGTTAACACACACCAAGAATCCACCTGGGAGGCAAACCCTA
CTTGTGTGGAGAGTGTGGTGGAGACTTCAGTGAACACAGGCGGTACCTGGCGCACCGGAAGACGCACGCT
GCTGAGGAACTTACCTCTGCAGCGAGTGCGGGCGCTGCTTACCCACAGCGCAGCGTTCGCCAAGCACT
TGAGAGGACACGCTCAGTGAAGCCCTGCCGATGCAACGAATGTGGGAAGAGCTTCAAGTGCAGGGACCA
CCTCGTCAAGCATCAGAGAACACACACTGGGGAGAAACCATTACGTGCCCTACCTGTGGAAAAAGCTTC
AGCAGAGGATATCACTTAATTAGGCATCAGAGGACCCACTCAGAAAAGACCTCC

ACGCGTACGCGGCCGCTCGAGCAGAAACTCATCTCAGAAGAGGATCTGGCAGCAATGATATCCTGGATT
ACAAGGATGACGACGATAAGGTTTAA

Protein Sequence: >RC200542 protein sequence
Red=Cloning site Green=Tags(s)

MATAVEPEDQDLWEEGILMVKLEDDFTCRPESVLQRDDPVLETSHQNFRRFRYQEAAAPREALIRLREL
 CHQWLRPERRTKEQILELLVLEQFLTVLPGELQSWVRGQRPESGEEAVTLVEGLQKQPRRPRRWTVVHV
 GQEVLSSEETVHLGAEPEPNELQDPVQSSTPEQSPPEETTQSPDLGAPAEQRPHQEELQTLQESEVPVPE
 DPDLPAERSSGDSEMVALLTALSQGLVTFKDVAVCFSDQDQWSDLPTQKEFYGEYVLEEDCGIVVLSFP
 IPRPDEISQVREEEPWVPDIQEPQETQEPEILSFITYTGDRSKDEEECLEQEDLSLEDIHRPVLGEPEIHQ
 TPDWEIVFEDNPGRLNERRFGTNI SQVNSFVNLRETTPVHPLLGRHDCSVCGKSFTCNHLVRHLRHTH
 GEKPKYKMECGKSYTRSSHLARHQVHKMNAPYKYPLNRNLEETSPVTQAERTPSVEKPYRCDDCGKHF
 RWTSDLVRHQRTHTGEKPFCTICGKFSQKSVLTTQRHLGGKPYLCGECGEDFSEHRRYLARHKTHA
 AEELYLCSECGRCFTHSAAF AKHLRGHASVRPCRCNECGKFSRRDHLVRHQRTHTGEKPFCTCPTCGKSF
 SRGYHLIRHQRTHSEKTS

TRTRPLEQKLI SEEDLAANDILDYKDDDDKV

Chromatograms: https://cdn.origene.com/chromatograms/mk6153_c03.zip

Restriction Sites: SgfI-MluI

Cloning Scheme:



ACCN: NM_003455

ORF Size: 1944 bp

OTI Disclaimer: The molecular sequence of this clone aligns with the gene accession number as a point of reference only. However, individual transcript sequences of the same gene can differ through naturally occurring variations (e.g. polymorphisms), each with its own valid existence. This clone is substantially in agreement with the reference, but a complete review of all prevailing variants is recommended prior to use. [More info](#)

OTI Annotation: This clone was engineered to express the complete ORF with an expression tag. Expression varies depending on the nature of the gene.

Components: The ORF clone is ion-exchange column purified and shipped in a 2D barcoded Matrix tube containing 10ug of transfection-ready, dried plasmid DNA (reconstitute with 100 ul of water).

Reconstitution Method:

1. Centrifuge at 5,000xg for 5min.
2. Carefully open the tube and add 100ul of sterile water to dissolve the DNA.
3. Close the tube and incubate for 10 minutes at room temperature.
4. Briefly vortex the tube and then do a quick spin (less than 5000xg) to concentrate the liquid at the bottom.
5. Store the suspended plasmid at -20°C. The DNA is stable for at least one year from date of shipping when stored at -20°C.

RefSeq: [NM_003455.1](#)

RefSeq Size: 4445 bp

RefSeq ORF: 1947 bp

Locus ID: 7753

UniProt ID: [O95125](#)

Cytogenetics: 11q24.1

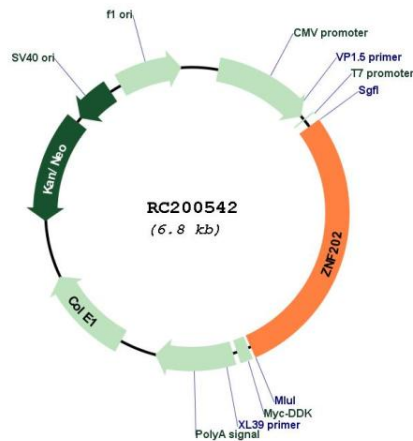
Domains: KRAB, LER, zf-C2H2

Protein Families: Transcription Factors

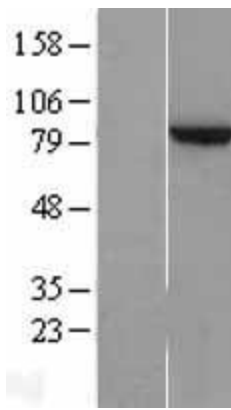
MW: 74.7 kDa

Gene Summary: Transcriptional repressor that binds to elements found predominantly in genes that participate in lipid metabolism. Among its targets are structural components of lipoprotein particles (apolipoproteins AIV, CIII, and E), enzymes involved in lipid processing (lipoprotein lipase, lecithin cholesteryl ester transferase), transporters involved in lipid homeostasis (ABCA1, ABCG1), and several genes involved in processes related to energy metabolism and vascular disease.[UniProtKB/Swiss-Prot Function]

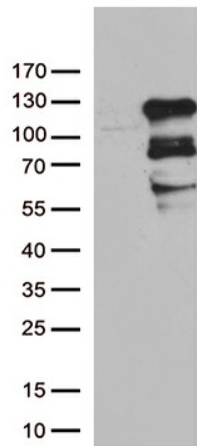
Product images:



Circular map for RC200542



Western blot validation of overexpression lysate (Cat# [LY401169]) using anti-DDK antibody (Cat# [TA50011-100]). Left: Cell lysates from untransfected HEK293T cells; Right: Cell lysates from HEK293T cells transfected with RC200542 using transfection reagent MegaTran 2.0 (Cat# [TT210002]).



HEK293T cells were transfected with the pCMV6-ENTRY control (Cat# [PS100001], Left lane) or pCMV6-ENTRY ZNF202 (Cat# RC200542, Right lane) cDNA for 48 hrs and lysed. Equivalent amounts of cell lysates (5 ug per lane) were separated by SDS-PAGE and immunoblotted with anti-ZNF202 (Cat# [TA811039])(1:500). Positive lysates [LY401169] (100ug) and [LC401169] (20ug) can be purchased separately from OriGene.