

## Product datasheet for RC200541

### NME6 (NM\_005793) Human Tagged ORF Clone

#### Product data:

Product Type:	Expression Plasmids
Product Name:	NME6 (NM_005793) Human Tagged ORF Clone
Tag:	Myc-DDK
Symbol:	NME6
Synonyms:	IPIA-ALPHA; NDK 6; NM23-H6
Mammalian Cell Selection:	Neomycin
Vector:	pCMV6-Entry (PS100001)
E. coli Selection:	Kanamycin (25 ug/mL)
ORF Nucleotide Sequence:	>RC200541 ORF sequence Red=Cloning site Blue=ORF Green=Tags(s)

TTTGTGAATACGACTCACTATAGGGCGGCCGGAATTCGTCGACTGGATCCGGTACCGAGGAGATCTGCC  
 GCCCGCATCGCC

ATGACCCAGAATCTGGGAGTGAGATGGCCTCAATCTTGCGAAGCCCTCAGGCTCTCCAGCTCACTCTAG  
 CCCTGATCAAGCCTGACGCAGTCGCCCCCACTGATTCTGGAGGCTGTCATCAGCAGATTCTAAGCAA  
 CAAGTTCTGATTGTACGAATGAGAGAACTACTGTGGAGAAAGGAAGATTGCCAGAGGTTTTACCGAGAG  
 CATGAAGGGCGTTTTTCTATCAGAGGCTGGTGGAGTTCATGGCCAGCGGGCCAATCCGAGCCTACATCC  
 TTGCCCAAGGATGCCATCCAGCTCTGGAGGACGCTCATGGGACCCACCAGAGTGTCCGAGCACGCCA  
 TGTGGCCCCAGATTCTATCCGTGGGAGTTTCGGCCTCACTGACACCCGCAACACCACCATGGTTCGGAC  
 TCTGTGGTTTCAGCCAGCAGAGAGATTGCAGCCTTCTTCCTGACTTCAGTGAACAGCGCTGGTATGAGG  
 AGGAAGAGCCCCAGTTGCGCTGTGGCCCTGTGTCTATAGCCCAGAGGGAGGTGTCCACTATGTAGCTGG  
 AACAGGAGGCCTAGGACCAGCC

ACGCGTACGCGGCCGCTCGAGCAGAACTCATCTCAGAAGAGGATCTGGCAGCAAATGATATCCTGGATT  
 ACAAGGATGACGACGATAAGGTTTAA

Protein Sequence:	>RC200541 protein sequence Red=Cloning site Green=Tags(s)
-------------------	--

MTQNLGSEMASILRSPQALQLTALIKPDAVAHPLILEAVHQILSNKFLIVRMRELLWRKEDCQRFYRE  
 HEGRFFYQRLVEFMASGPIRAYILAHKDAIQLWRTLMGPTRVFRARHVAPDSIRGSFGLTDTRNTTHGSD  
 SVVSASREIAAFFPDFSEQRWYEEEPQLRCGPVCYSPEGGVHYVAGTGGLGPA

TRTRPLEQKLISEEDLAANDILDYKDDDDKV


[View online »](#)

**Chromatograms:** [https://cdn.origene.com/chromatograms/mk6385\\_a11.zip](https://cdn.origene.com/chromatograms/mk6385_a11.zip)

**Restriction Sites:** SgfI-MluI

**Cloning Scheme:**



**ACCN:** NM\_005793

**ORF Size:** 582 bp

**OTI Disclaimer:** The molecular sequence of this clone aligns with the gene accession number as a point of reference only. However, individual transcript sequences of the same gene can differ through naturally occurring variations (e.g. polymorphisms), each with its own valid existence. This clone is substantially in agreement with the reference, but a complete review of all prevailing variants is recommended prior to use. [More info](#)

**OTI Annotation:** This clone was engineered to express the complete ORF with an expression tag. Expression varies depending on the nature of the gene.

**Components:** The ORF clone is ion-exchange column purified and shipped in a 2D barcoded Matrix tube containing 10ug of transfection-ready, dried plasmid DNA (reconstitute with 100 ul of water).

**Reconstitution Method:**

1. Centrifuge at 5,000xg for 5min.
2. Carefully open the tube and add 100ul of sterile water to dissolve the DNA.
3. Close the tube and incubate for 10 minutes at room temperature.
4. Briefly vortex the tube and then do a quick spin (less than 5000xg) to concentrate the liquid at the bottom.
5. Store the suspended plasmid at -20°C. The DNA is stable for at least one year from date of shipping when stored at -20°C.

**RefSeq:** [NM\\_005793.4](#)

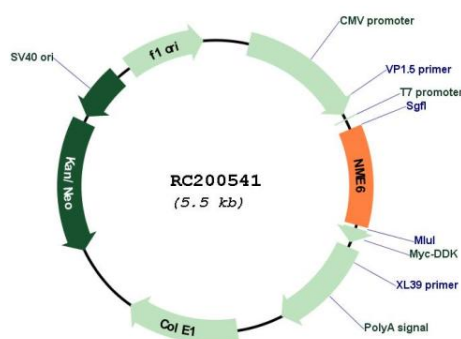
**RefSeq Size:** 1189 bp

**RefSeq ORF:** 585 bp

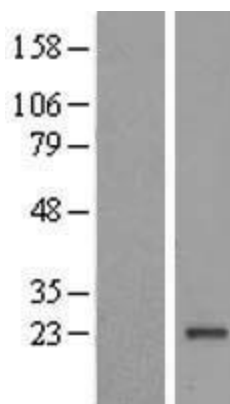
**Locus ID:** 10201

UniProt ID:	<a href="#">O75414</a>
Cytogenetics:	3p21.31
Domains:	NDK
Protein Families:	Druggable Genome
Protein Pathways:	Metabolic pathways, Purine metabolism, Pyrimidine metabolism
MW:	22 kDa
Gene Summary:	Nucleoside diphosphate (NDP) kinases (EC 2.7.4.6), such as NME6, are ubiquitous enzymes that catalyze transfer of gamma-phosphates, via a phosphohistidine intermediate, between nucleoside and dioxynucleoside tri- and diphosphates (Mehus et al., 1999 [PubMed 10453732]).[supplied by OMIM, Jul 2010]

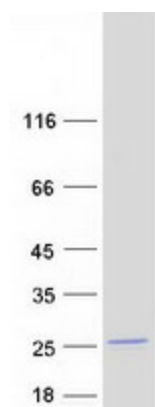
## Product images:



Circular map for RC200541



Western blot validation of overexpression lysate (Cat# [LY417079]) using anti-DDK antibody (Cat# [TA50011-100]). Left: Cell lysates from untransfected HEK293T cells; Right: Cell lysates from HEK293T cells transfected with RC200541 using transfection reagent MegaTran 2.0 (Cat# [TT210002]).



Coomassie blue staining of purified NME6 protein (Cat# [TP300541]). The protein was produced from HEK293T cells transfected with NME6 cDNA clone (Cat# RC200541) using MegaTran 2.0 (Cat# [TT210002]).