

Product datasheet for **RC200527**

ANT 1 (PRPF6) (NM_012469) Human Tagged ORF Clone

Product data:

| | |
|---------------------------|--|
| Product Type: | Expression Plasmids |
| Product Name: | ANT 1 (PRPF6) (NM_012469) Human Tagged ORF Clone |
| Tag: | Myc-DDK |
| Symbol: | PRPF6 |
| Synonyms: | ANT-1; ANT1; C20orf14; hPrp6; Prp6; RP60; SNRNP102; TOM; U5-102K |
| Vector: | pCMV6-Entry (PS100001) |
| E. coli Selection: | Kanamycin (25 ug/mL) |
| Cell Selection: | Neomycin |



[View online »](#)

ORF Nucleotide
Sequence:

>RC200527 ORF sequence
Red=Cloning site Blue=ORF Green=Tags(s)

TTTTGTAATACGACTCACTATAGGGCGGCCGGGAATTCGTCGACTGGATCCGGTACCGAGGAGATCTGCC
GCCCGCATCGCC

ATGAACAAGAAGAAGAAACCGTTCTAGGGATGCCCGCGCCCTCGGCTACGTGCCGGGGCTGGGCCGGG
GCGCCACTGGCTTACCACGCGGTCAGACATTGGGCCCGCCCGTATGCAAATGACCCTGTGGATGATCG
CCATGCACCCCCAGGCAAGAGAACCCTGGGGACCAGATGAAGAAAAATCAGGCTGCTGACGATGACGAC
GAGGATCTAAATGACACCAATTACGATGAGTTTAAATGGCTATGCTGGGAGCCTCTTCTCAAGTGGACCT
ACGAGAAAAGATGATGAGGAAGCAGATGCTATCTATGCAGCCCTGGATAAAAAGGATGGATGAAAGAAGAAA
AGAAAGACGGGAGCAAAGGGAGAAAAGAAGAAATAGAGAAATATCGTATGGAACGCCCCAAAATCCAACAG
CAGTTCTCAGACCTCAAGAGGAAGTTGGCAGAAGTCACAGAAGAAGAGTGGCTGAGCATCCCCGAGGTTG
GCGATGCCAGAAAATAACGTCAGCGGAACCCACGCTATGAGAAGCTGACCCTGTTCTGACAGTTTCTT
TGCCAAACATTTACAGACCGGAGAGAACCATACCTCAGTGGATCCCCGACAACTCAATTTGGAGGTCTT
AACACACCCTATCCAGGTGGACTAAACACTCCATACCCAGGTGGAATGACGCCAGGACTGATGACACCTG
GCACAGGTGAGCTGGACATGAGGAAGATTGGCCAAGCGAGGAACACTCTGATGGACATGAGGCTGAGCCA
GGTGTCTGACTCCGTGAGTGGACAGACCCTGTTGACCCCAAAGGCTACCTGACGGATTTAAATCCATG
ATCCCCGACACACGGAGGAGACATCAATGATATCAAGAAGCGCGACTGCTCCTCAAGTCTGTTCCGGAGA
CGAACCCTCATACCCGCCAGCCTGGATTGCATCAGCCCGCTGGAAGAAGTCACTGGGAAGCTACAAGT
AGCTCGGAACCTTATCATGAAGGGGACGGAGATGTGCCCAAGAGTGAAGATGTCTGGCTGGAAGCAGCC
AGGTTGCAGCCTGGGGACACAGCCAAGGCCGTGGTAGCCCAAGCTGTCCGTATCTCCCACAGTGTCTCA
GGATTTACATCAGAGCCGACAGCTGGAACCGGACATTCGTGCAAGAAGCGGGTCTTCGGAAAGCCTC
CGAGCATGTTCCAACTCGGTTTCGTTTGTGAAAAGCAGCCGTTGAGCTGGAAGAACCTGAAGATGCTAGA
ATCATGCTGAGCCGAGCTGTGGAGTGTGCCCCACCAGCGTGGAGCTCTGGCTTGTCTGCAAGGCTGG
AGACCTATGAAAATGCCCGCAAGGTCTTGAACAAGGCGCGGGAGAACATTCTACAGACCACATATCTG
GATCACGGCTGCTAAGCTGGAGGAAGCCAATGGGAACACGCGAGATGGTGGAGAAGATCATCGACCAGCC
ATCACCTCGTGCGGGCCAACGGTGTGGAGATCAACCGTGAAGCAGTGGATCCAGGATGCCAGGAATGTG
ACAGGGCTGGGAGTGTGGCCACCTGCCAGGCCGTATGCGTGCCTGATTGGGATTGGGATTGAGGAGGA
AGATCGGAAGCATACCTGGATGGAGGATGCTGACAGTTGTGTAGCCACAATGCCCTGGAGTGTGCACGA
GCCATCTACGCCCTACGCCCTGCAGGTGTCCCCAGCAAGAAGAGTGTGTGGCTGCGCGCCCGTACTTCCG
AGAAGAACCATGGCACTCGGGAGTCCCTGGAAGCACTCCTGCAGAGGGCTGTGGCCCACTGCCCAAAGC
AGAGGTGCTGTGGCTCATGGGCGCCAAGTCCAAGTGGCTGGCAGGGGATGTGCCTGCAGCAAGGAGCATC
CTGGCCCTGGCCTTCCAGGCCAACCCCAACAGTGAAGGATCTGGCTGGCAGCCGTGAAGCTGGAGTCCG
AGAATGATGAGTACGAGCGGGCCCGGAGGCTGCTGGCCAAGGCGCGGAGCAGTGCACCCACCGCCGGGT
GTTTCATGAAGTCTGTGAAGCTGGAGTGGGTGCAAGACAACATCAGGGCAGCCCAAGATCTGTGCGAGGAG
GCCCTGCGGCACTATGAGGACTTCCCAAGCTGTGGATGATGAAGGGCAGATCGAGGAGCAGAAGGAGA
TGATGGAGAAGGCGGGGAAGCCTATAACCAGGGGTTGAAGAAGTGTCCCCTCCACACCCCTGTGGCT
TTTGCTCTCGGCTGGAGGAGAAGATTGGGCAGCTTACTCGAGCACGGGCCATTTTGGAAAAGTCTCGT
CTGAAGAACCCTAAAGAACCCTGGGCTGTGGTTGGAGTCCGTGCGGCTGGAGTACCGTGGGGCTGAAGA
ACATCGCAAATACACTCATGGCCAAGGCGCTGCAGGAGTGCACCAACTCCGGTATCCTGTGGTCTGAGGC
CATCTTCTCGAGGCAAGGCCCCAGAGGAGGACCAAGAGCGTGGATGCCCTGAAGAAGTGTGAGCATGAC
CCCCATGTGCTCCTGGCCGTGGCCAAGCTGTTTTGGAGTCAAGGGAAGATCACCAGGCCAGGGAGTGGT
TCCACCGCACTGTGAAGATTGACTCGGACCTGGGGATGCCTGGGCTTCTTCTACAAGTTTGGAGTCA
GCATGGCACTGAGGAGCAGCAGGAGGAGGTGAGGAAGCGCTGTGAGAGTGCAGAGCCTCGGCATGGGGAG
CTGTGGTGCAGGCTGTCCAAGGACATCGCAACTGGCAGAAGAAGATCGGGGACATCCTTAGGCTGGTGG
CGGGCCGATCAAGAACACCTTC

ACGCGTACGCGGCCGCTCGAGCAGAACTCATCTCAGAAGAGGATCTGGCAGCAAATGATATCCTGGATT
ACAAGGATGACGACGATAAGGTTTAA

Protein Sequence: >RC200527 protein sequence
 Red=Cloning site Green=Tags(s)

MNKKKKPFLGMPAPLGYVPLGRGATGFTTRSDIGPARDANDPVDDRHPAPGKRTVGDQMKKNQAADDD
 EDLNDTNYDEFNGYAGSLFSSGPYEKDDDEADAIYAALDKRMDERRKERREKREKIEKYRMERPKIQQ
 QFSDLKRKLAEVTEEEWLSIPEVGDARNKRQRNPRYEKLTPVPDSFFAKHLQTGENHTSVDPRTQFGGL
 NTPYPGGLNTPYPGMTPGLMTPGTGELDMRKIGQARNTLMDMRLSQVSDSVSGQTVVDPKGYLTDLNSM
 IPTHGGDINDIKKARLLKSVRETNPHPHAWIASARLEEVTGKLQVARNLIMKGTMECPKSEDVWLEAA
 RLQPGDTAKAVVAQAVRHLPQSVRIYIRAAELETDIRAKRVLRLKALEHPVNSVRLWKAAVELEEPEDAR
 IMLSRAVECCPTSVLWLALARLETYENARKVLNKARENIPDRHIWITAAKLEEANGNTQVKEIIDRA
 ITSLRANGVEINREQWIQDAEECDRAGSVATCQAVMRAVIGIGIEEEDRKHTWMEDADSCVAHNALECAR
 AIYAYALQVFPSSKSVLRAAYFEKNHGTRESLEALLQRAVAHCPKAEVLWLGAKSKWLAGDVPAAARSI
 LALAFQANPNSEEIWLAAVKLESENDEYERARRLLAKARSSAPTARVFMKSVKLEWVQDNIRAAQDLCEE
 ALRHIEDFPKLWMMKGQIEEQEMMEKAREAYNQGLKKCPHSTPLWLLSRLEEKIGQLTRARAILEKSR
 LKNPKNPLWLESVRLEYRAGLNKIANTLMAKALQECPNGILWSEAIFFLEARPQRRTKSDALKKCEHD
 PHVLLAVAKLFWSQRKITKAREWFHRTVKIDSIDLGDWAFFYKFEHQHGTEEQEEVVRKRCESAEPRHGE
 LWCAVSKDIANWQKKIGDILRLVAGRIKNTF

TRTRPLEQKLISEEDLAANDILDYKDDDDKV

Chromatograms: https://cdn.origene.com/chromatograms/mk6291_c11.zip

Restriction Sites: SgfI-MluI

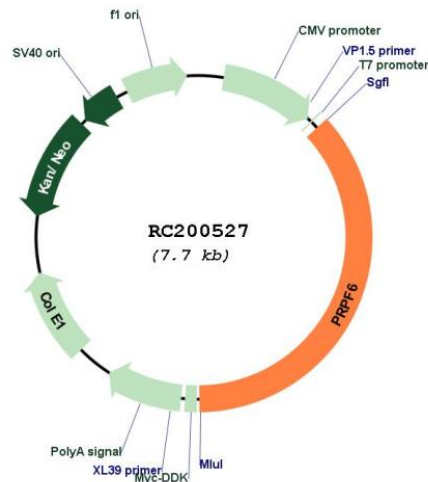
Cloning Scheme:

Cloning sites used for ORF Shuttling:



* The last codon before the Stop codon of the ORF

Plasmid Map:



ACCN: NM_012469

ORF Size: 2823 bp

OTI Disclaimer: The molecular sequence of this clone aligns with the gene accession number as a point of reference only. However, individual transcript sequences of the same gene can differ through naturally occurring variations (e.g. polymorphisms), each with its own valid existence. This clone is substantially in agreement with the reference, but a complete review of all prevailing variants is recommended prior to use. [More info](#)

OTI Annotation: This clone was engineered to express the complete ORF with an expression tag. Expression varies depending on the nature of the gene.

RefSeq: [NM_012469.4](#)

RefSeq Size: 3120 bp

RefSeq ORF: 2826 bp

Locus ID: 24148

UniProt ID: [O94906](#)

Domains: TPR, HAT

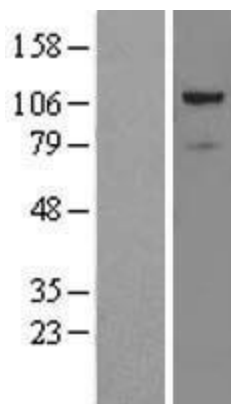
Protein Families: Druggable Genome

Protein Pathways: Spliceosome

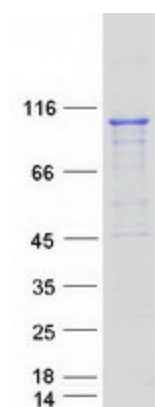
MW: 106.9 kDa

Gene Summary: The protein encoded by this gene appears to be involved in pre-mRNA splicing, possibly acting as a bridging factor between U5 and U4/U6 snRNPs in formation of the spliceosome. The encoded protein also can bind androgen receptor, providing a link between transcriptional activation and splicing. [provided by RefSeq, Jul 2008]

Product images:



Western blot validation of overexpression lysate (Cat# [LY415739]) using anti-DDK antibody (Cat# [TA50011-100]). Left: Cell lysates from untransfected HEK293T cells; Right: Cell lysates from HEK293T cells transfected with RC200527 using transfection reagent MegaTran 2.0 (Cat# [TT210002]).



Coomassie blue staining of purified PRPF6 protein (Cat# [TP300527]). The protein was produced from HEK293T cells transfected with PRPF6 cDNA clone (Cat# RC200527) using MegaTran 2.0 (Cat# [TT210002]).