

Product datasheet for **RC200521L3V**

MCL1 (NM_021960) Human Tagged ORF Clone Lentiviral Particle

Product data:

Product Type:	Lentiviral Particles
Product Name:	MCL1 (NM_021960) Human Tagged ORF Clone Lentiviral Particle
Symbol:	MCL1
Synonyms:	bcl2-L-3; BCL2L3; EAT; Mcl-1; MCL1-ES; mcl1/EAT; MCL1L; MCL1S; TM
Mammalian Cell Selection:	Puromycin
Vector:	pLenti-C-Myc-DDK-P2A-Puro (PS100092)
Tag:	Myc-DDK
ACCN:	NM_021960
ORF Size:	1050 bp
ORF Nucleotide Sequence:	The ORF insert of this clone is exactly the same as(RC200521).
OTI Disclaimer:	The molecular sequence of this clone aligns with the gene accession number as a point of reference only. However, individual transcript sequences of the same gene can differ through naturally occurring variations (e.g. polymorphisms), each with its own valid existence. This clone is substantially in agreement with the reference, but a complete review of all prevailing variants is recommended prior to use. More info
OTI Annotation:	This clone was engineered to express the complete ORF with an expression tag. Expression varies depending on the nature of the gene.
RefSeq:	NM_021960.3
RefSeq Size:	4020 bp
RefSeq ORF:	1053 bp
Locus ID:	4170
UniProt ID:	Q07820
Cytogenetics:	1q21.2
Domains:	Bcl-2
Protein Families:	Druggable Genome, Transmembrane

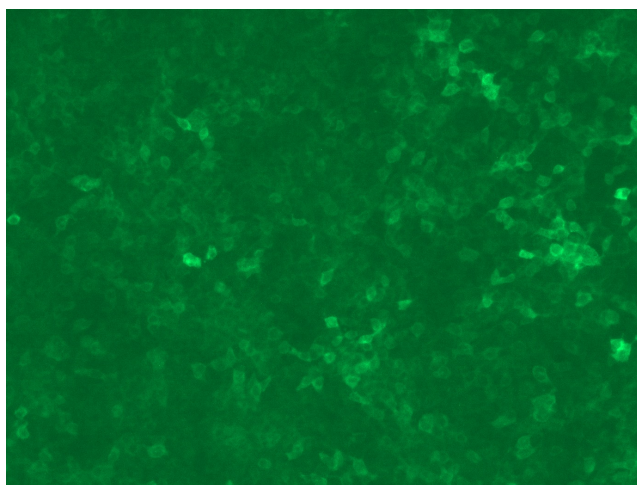


[View online »](#)

MW: 37.2 kDa

Gene Summary: This gene encodes an anti-apoptotic protein, which is a member of the Bcl-2 family. Alternative splicing results in multiple transcript variants. The longest gene product (isoform 1) enhances cell survival by inhibiting apoptosis while the alternatively spliced shorter gene products (isoform 2 and isoform 3) promote apoptosis and are death-inducing. [provided by RefSeq, Oct 2010]

Product images:



[RC200521L3] was used to prepare Lentiviral particles using [TR30037] packaging kit. HEK293T cells were transduced with RC200521L3V particle to overexpress human MCL1-Myc-DDK fusion protein.