

Product datasheet for **RC200521**

MCL1 (NM_021960) Human Tagged ORF Clone

Product data:

Product Type:	Expression Plasmids
Product Name:	MCL1 (NM_021960) Human Tagged ORF Clone
Tag:	Myc-DDK
Symbol:	MCL1
Synonyms:	bcl2-L-3; BCL2L3; EAT; Mcl-1; MCL1-ES; mcl1/EAT; MCL1L; MCL1S; TM
Vector:	pCMV6-Entry (PS100001)
E. coli Selection:	Kanamycin (25 ug/mL)
Cell Selection:	Neomycin
ORF Nucleotide Sequence:	>RC200521 representing NM_021960 Red=Cloning site Blue=ORF Green=Tags(s)

TTTTGTAATACGACTCACTATAGGGCGGCCGGAATTCGTCGACTGGATCCGGTACCGAGGAGATCTGCC
GCC**CGGATCGCC**

ATGTTTGGCCTCAAAGAAACGCGGTAATCGGACTCAACCTCTACTGTGGGGGGCCGGCTTGGGGGCCG
GCAGCGGGCGCCACCCGCCGGGAGGGCGACTTTTGGCTACGGAGAAGGAGGCCTCGGCCGGCGAGA
GATAGGGGGAGGGGAGGCCGGCGCGGTGATTGGCGGAAGCGCCGGCGCAAGCCCCCGTCCACCCTCAG
CCAGACTCCCGGAGGGTTCGCGCGCCGCCGCCATTGGCCGCCGAGGTCCCGACGTACCCGACCCCCG
CGAGGCTGCTTTTCTTCGCGCCACCCGCCGCGCGCCGCTTGAGGAGATGGAAGCCCCGCGCGTGA
CGCCATCATGTCGCCGAAGAGGAGCTGGACGGGTACGAGCCGGAGCCTCTCGGGAAGCGGCCGGCTGTC
CTGCCGCTGCTGGAGTTGGTCGGGAATCTGGTAATAACACCAAGTACGGACGGGTCACTACCCTCGACGC
CGCCGCCAGCAGAGGAGGAGGAGGACGAGTTGTACCGCAGTCGCTGGAGATTATCTCTCGGTACCTTCG
GGAGCAGGCCACCGCGCCAAGGACACAAAGCCAATGGGCAGGTCTGGGGCCACCAGCAGGAAGGCGCTG
GAGACCTTACGACGGTTGGGGATGGCGTGCAGCGCAACCACGAGACGGCCTTCCAAGCCTGCTTCGGA
AACTGGACATCAAAAACGAAGACGATGTAAATCGTTGTCTCGAGTGATGATCCATGTTTTTCAGCGACGC
CGTAACAAACTGGGGCAGGATTGTACTCTCATTCTTTTGGTGCTTTTGGTAAACACTTGAAGACC
ATAAACCAAGAAAGCTGCATCGAACATTAGCAGAAAGTATCACAGACGTTCTCGTAAGGACAAAACGGG
ACTGGCTAGTTAAACAAAGAGGCTGGGATGGGTTTGTGGAGTTCTCCATGTAGAGGACCTAGAAGTGG
CATCAGGAATGTGCTGCTGGCTTTTGCAGGTGTTGCTGGAGTAGGAGCTGGTTTGGCATATCTAATAAGA

ACGGTACGCGGCCGCTCGAGCAGAACTCATCTCAGAAGAGGATCTGGCAGCAATGATATCTGGATT
ACAAGGATGACGACGATAAGGTTTAA



[View online »](#)

Protein Sequence: >RC200521 representing NM_021960
 Red=Cloning site Green=Tags(s)

MFGLKRNAVIGLNLVYCGGAGLGAGSGGATRPGGRLATEKEASARREIGGGEAGAVIGGSAGASPPSTLT
 PDSRRVARPPPIGAEVPDVTATPARLLFFAPTRRAAPLEEMEAPAADAIMSPEEELDGYEPEPLGKRPAV
 LPLLELVGESGNNSTVDGSLPSTPPPAEEEEDELRYQSLEIIISRYLREQATGAKDKPMGRSGATSRKAL
 ETLRRVGDGVQRNHETAFQGLRKLDIKNEDDVKSLSRVMIHVFSDGVTNWGRIVTLISFGAFVAKHLKT
 INQESCIPLAESITDVLVTRTKRDWLKQRGWDGFVEFFHVEDLEGGIRNVLLAFAGVAGVGAGLAYLIR

TRTRPLEQKLISEEDLAANDILDYKDDDDKV

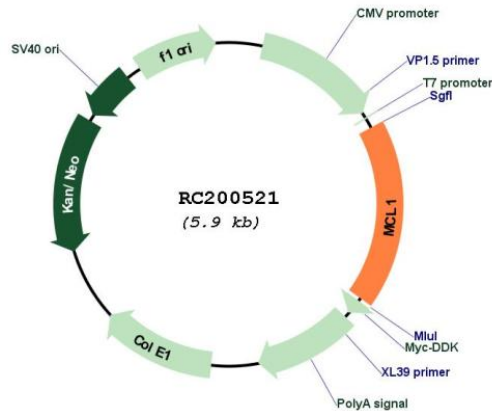
Chromatograms: https://cdn.origene.com/chromatograms/mg2997_c01.zip

Restriction Sites: SgfI-MluI

Cloning Scheme:



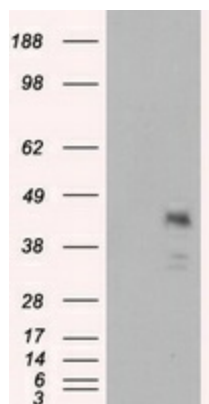
Plasmid Map:



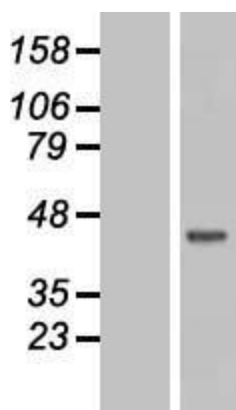
ACCN: NM_021960

ORF Size:	1050 bp
OTI Disclaimer:	The molecular sequence of this clone aligns with the gene accession number as a point of reference only. However, individual transcript sequences of the same gene can differ through naturally occurring variations (e.g. polymorphisms), each with its own valid existence. This clone is substantially in agreement with the reference, but a complete review of all prevailing variants is recommended prior to use. More info
OTI Annotation:	This clone was engineered to express the complete ORF with an expression tag. Expression varies depending on the nature of the gene.
RefSeq:	NM_021960.5
RefSeq Size:	4020 bp
RefSeq ORF:	1053 bp
Locus ID:	4170
UniProt ID:	Q07820
Domains:	Bcl-2
Protein Families:	Druggable Genome, Transmembrane
MW:	37.2 kDa
Gene Summary:	This gene encodes an anti-apoptotic protein, which is a member of the Bcl-2 family. Alternative splicing results in multiple transcript variants. The longest gene product (isoform 1) enhances cell survival by inhibiting apoptosis while the alternatively spliced shorter gene products (isoform 2 and isoform 3) promote apoptosis and are death-inducing. [provided by RefSeq, Oct 2010]

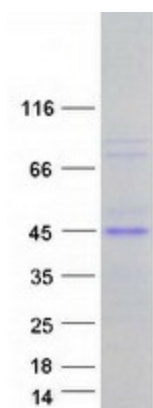
Product images:



HEK293T cells were transfected with the pCMV6-ENTRY control (Cat# [PS100001], Left lane) or pCMV6-ENTRY MCL1 (Cat# RC200521, Right lane) cDNA for 48 hrs and lysed. Equivalent amounts of cell lysates (5 ug per lane) were separated by SDS-PAGE and immunoblotted with anti-MCL1 (Cat# [TA500986]). Positive lysates [LY411855] (100ug) and [LC411855] (20ug) can be purchased separately from OriGene.



Western blot validation of overexpression lysate (Cat# [LY411855]) using anti-DDK antibody (Cat# [TA50011-100]). Left: Cell lysates from un-transfected HEK293T cells; Right: Cell lysates from HEK293T cells transfected with RC200521 using transfection reagent MegaTran 2.0 (Cat# [TT210002]).



Coomassie blue staining of purified MCL1 protein (Cat# [TP300521]). The protein was produced from HEK293T cells transfected with MCL1 cDNA clone (Cat# RC200521) using MegaTran 2.0 (Cat# [TT210002]).