

## Product datasheet for **RC200513**

### **HAND1 (NM\_004821) Human Tagged ORF Clone**

#### Product data:

**Product Type:** Expression Plasmids  
**Product Name:** HAND1 (NM\_004821) Human Tagged ORF Clone  
**Tag:** Myc-DDK  
**Symbol:** HAND1  
**Synonyms:** bHLHa27; eHand; Hxt; Thing1  
**Mammalian Cell Selection:** Neomycin  
**Vector:** pCMV6-Entry (PS100001)  
**E. coli Selection:** Kanamycin (25 ug/mL)  
**ORF Nucleotide Sequence:** >RC200513 representing NM\_004821  
Red=Cloning site Blue=ORF Green=Tags(s)

TTTTGTAATACGACTCACTATAGGGCGCCGGGAATTCGTCGACTGGATCCGGTACCGAGGAGATCTGCC  
GCC**CGATCGCC**

ATGAACCTCGTGGGCAGCTACGCACACCATCACCACCATCACCACCCGCACCCTGCGCACCCCATGCTCC  
ACGAACCTTCTCTTCGGTCCGGCCTCGCGTGTTCATCAGGAAAGGCCCTACTTCCAGAGCTGGCTGCT  
GAGCCCGGCTGACGCTGCCCGGACTTCCCTGCGGGCGGGCCGCCCGCCGCGCCGCTGCAGCCGCCACC  
GCCTATGGTCTGACGCCAGGCCTGGGCAGAGCCCGGGCGGCTGGAGGCGCTTGGCGCCGCTCTTGCC  
GGCGGAAAGGCTCAGGACCAAGAAGGAGCGGAGACGCACTGAGAGCATTAAACAGCGCATTTCGGGAGTT  
GCGGAGTGCATCCCAACGTGCCGGCCGACACCAAGCTCTCAAGATCAAGACTCTGCGCTAGCCACC  
AGCTACATCGCCTACCTGATGGACGTGTGGCCAAAGGATGCACAGTCTGGCGATCCCAGGCCTTCAAGG  
CTGAACTCAAGAAGGCGGATGGCGGCCGTGAGAGCAAGCGGAAAAGGGAGCTGCAGCAGCACGAAGTTT  
TCTCTGCCCTGGGCCAGTCGAGAAGAGGATTAAGGACGCACCGGCTGGCCGAGCAAGTCTGGGCG  
CTGGAGTTAAACCAG

**ACGCGT**ACGCGGGCCGCTCGAGCAGAACTCATCTCAGAAGAGGATCTGGCAGCAATGATATCTGGATT  
ACAAGGATGACGACGATAAGGTTTAA



[View online »](#)



**Reconstitution Method:**

1. Centrifuge at 5,000xg for 5min.
2. Carefully open the tube and add 100ul of sterile water to dissolve the DNA.
3. Close the tube and incubate for 10 minutes at room temperature.
4. Briefly vortex the tube and then do a quick spin (less than 5000xg) to concentrate the liquid at the bottom.
5. Store the suspended plasmid at -20°C. The DNA is stable for at least one year from date of shipping when stored at -20°C.

**RefSeq:** [NM\\_004821.3](#)

**RefSeq Size:** 1750 bp

**RefSeq ORF:** 648 bp

**Locus ID:** 9421

**UniProt ID:** [O96004](#)

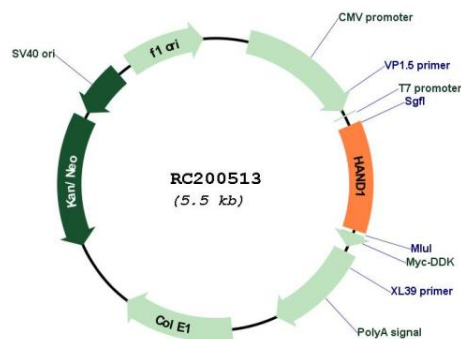
**Cytogenetics:** 5q33.2

**Protein Families:** Druggable Genome, ES Cell Differentiation/IPS, Transcription Factors

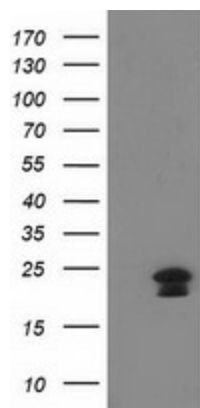
**MW:** 23.4 kDa

**Gene Summary:** The protein encoded by this gene belongs to the basic helix-loop-helix family of transcription factors. This gene product is one of two closely related family members, the HAND proteins, which are asymmetrically expressed in the developing ventricular chambers and play an essential role in cardiac morphogenesis. Working in a complementary fashion, they function in the formation of the right ventricle and aortic arch arteries, implicating them as mediators of congenital heart disease. In addition, it has been suggested that this transcription factor may be required for early trophoblast differentiation. [provided by RefSeq, Jul 2008]

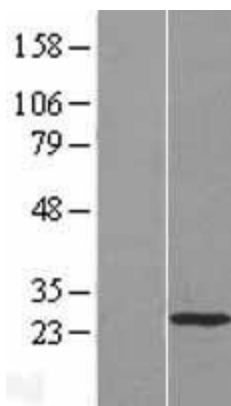
### Product images:



Circular map for RC200513



HEK293T cells were transfected with the pCMV6-ENTRY control (Cat# [PS100001], Left lane) or pCMV6-ENTRY HAND1 (Cat# RC200513, Right lane) cDNA for 48 hrs and lysed. Equivalent amounts of cell lysates (5 ug per lane) were separated by SDS-PAGE and immunoblotted with anti-HAND1(Cat# [TA502671]). Positive lysates [LY417727] (100ug) and [LC417727] (20ug) can be purchased separately from OriGene.



Western blot validation of overexpression lysate (Cat# [LY417727]) using anti-DDK antibody (Cat# [TA50011-100]). Left: Cell lysates from untransfected HEK293T cells; Right: Cell lysates from HEK293T cells transfected with RC200513 using transfection reagent MegaTran 2.0 (Cat# [TT210002]).