

Product datasheet for RC200512

CALHM2 (NM_015916) Human Tagged ORF Clone

Product data:

Product Type:	Expression Plasmids
Product Name:	CALHM2 (NM_015916) Human Tagged ORF Clone
Tag:	Myc-DDK
Symbol:	CALHM2
Synonyms:	FAM26B
Mammalian Cell Selection:	Neomycin
Vector:	pCMV6-Entry (PS100001)
E. coli Selection:	Kanamycin (25 ug/mL)
ORF Nucleotide Sequence:	>RC200512 ORF sequence Red=Cloning site Blue=ORF Green=Tags(s)

TTTTGTAATACGACTCACTATAGGGCGGCCGGAATTCGTCGACTGGATCCGGTACCGAGGAGATCTGCC
GCC**CGGATCGCC**

ATGGCAGCCCTGATCGCAGAGAAGCTTCCGCTTCTGTCACCTTTCTTCAAGAGCAAGGATGTGATGATTT
TCAACGGCCTGGTGGCACTGGGCACGGTGGGCAGCCAGGAGCTGTTCTCTGTGGTGGCCTTCCACTGCC
CTGCTCGCCGGCCGGAACCTACCTGTACGGCTGGCGCCATCGGCGTGGCCGCTTCCCTGCTCTTCATC
ATTGGCATCATCCTCAACAACCACACCTGGAACCTCGTGGCCGAGTGCCAGCACCGGAGGACCAAGAAGT
GCTCCGCCGCCACCTTCCCTCTTCTAAGCTCCATCCTGGGACGTGGCGCTGTGGCCCTGTCACCTG
GTCTGTACATCCCTGCTGCGTGGTGGGCTTATGTCTGTGCTCTCAGTGAGTTCGTGGACCTTCCCTCA
CTCACGGCCAGGGAAGAGCACTTCCCATCAGCCACGCCACTGAAATCCTGGCCAGGTTCCCTGCAAGG
AGAACCCTGACAACCTGTGAGACTTCCGGGAGGAGGTCAGCCGCAGGCTCAGGTATGAGTCCCAGCTCTT
TGGATGGCTGCTCATCGGCGTGGTGGCCATCCTGGTGTCTGACCAAGTGCCTCAAGCATTACTGCTCA
CCACTCAGCTACCGCCAGGAGGCTACTGGCGCAGTACCGGCCAATGAGGACCAGCTGTTCCAGCGCA
CGGCCGAGGTGCACTCTCGGGTCTCGCTGCCAACAATGTGCGCCGCTTCTTTGGCTTTGTGGCGCTCAA
CAAGGATGATGAGGAAGTATTGCCAAGTCCCAGTGGAAAGGCACGCAGCCACGGCCACAGTGAATGCC
ATCACCGCGTCTACTTGTACCGTGAGAACCAGGGCCTCCCACTCTACAGCCGCTGCACAAGTGGGCC
AGGGTCTGGCAGGCAACGGCGCGCCCTGACAACGTGGAGATGGCCCTGCTCCCCTCC

ACGCGTACGCGGCCGCTCGAGCAGAAACTCATCTCAGAAGAGGATCTGGCAGCAATGATATCCTGGATT
ACAAGGATGACGACGATAAGGTTTAA



[View online »](#)

Protein Sequence: >RC200512 protein sequence
Red=Cloning site Green=Tags(s)

MAALIAENFRFLSLFFKSKDVMIFNGLVALGTVGSQELFSVVAFHPCPCSPARNLYGLAAIGVPALVLFII
 IGIIILNNHTWNLVAECQHRRTKNCSAAPTFLLLSSILGRAAVAPVTWSVISLLRGEAYVCALSEFVDPSS
 LTAREEHFSAHATEILARFPCKENPDNLSDFREEVSRRLRYESQLFGWLLIGVVAILVFLTKCLKHYCS
 PLSYRQEAYWAQYRANEDQLFQRTAEVHSRVLAAANNVRRFFGFVALNKDDEELIANFPVEGTQPRPQWNA
 ITGVVLYRENQGLPLYRSLHKWAQGLAGNGAAPDNVEMALLPS

TRTRPLEQKLISEEDLAANDILDYKDDDDKV

Chromatograms: https://cdn.origene.com/chromatograms/mk6394_b02.zip

Restriction Sites: SgfI-MluI

Cloning Scheme:



ACCN: NM_015916

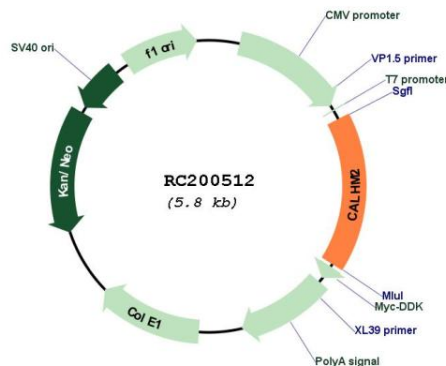
ORF Size: 969 bp

OTI Disclaimer: Due to the inherent nature of this plasmid, standard methods to replicate additional amounts of DNA in E. coli are highly likely to result in mutations and/or rearrangements. Therefore, OriGene does not guarantee the capability to replicate this plasmid DNA. Additional amounts of DNA can be purchased from OriGene with batch-specific, full-sequence verification at a reduced cost. Please contact our customer care team at custsupport@origene.com or by calling 301.340.3188 option 3 for pricing and delivery.

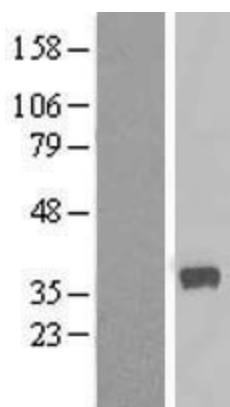
The molecular sequence of this clone aligns with the gene accession number as a point of reference only. However, individual transcript sequences of the same gene can differ through naturally occurring variations (e.g. polymorphisms), each with its own valid existence. This clone is substantially in agreement with the reference, but a complete review of all prevailing variants is recommended prior to use. [More info](#)

OTI Annotation:	This clone was engineered to express the complete ORF with an expression tag. Expression varies depending on the nature of the gene.
Components:	The ORF clone is ion-exchange column purified and shipped in a 2D barcoded Matrix tube containing 10ug of transfection-ready, dried plasmid DNA (reconstitute with 100 ul of water).
Reconstitution Method:	<ol style="list-style-type: none">1. Centrifuge at 5,000xg for 5min.2. Carefully open the tube and add 100ul of sterile water to dissolve the DNA.3. Close the tube and incubate for 10 minutes at room temperature.4. Briefly vortex the tube and then do a quick spin (less than 5000xg) to concentrate the liquid at the bottom.5. Store the suspended plasmid at -20°C. The DNA is stable for at least one year from date of shipping when stored at -20°C.
RefSeq:	NM_015916.5
RefSeq Size:	1966 bp
RefSeq ORF:	972 bp
Locus ID:	51063
UniProt ID:	Q9HA72
Cytogenetics:	10q24.33
Protein Families:	Transmembrane
MW:	36.2 kDa
Gene Summary:	Pore-forming subunit of a voltage-gated ion channel.[UniProtKB/Swiss-Prot Function]

Product images:



Circular map for RC200512



Western blot validation of overexpression lysate (Cat# [LY414319]) using anti-DDK antibody (Cat# [TA50011-100]). Left: Cell lysates from untransfected HEK293T cells; Right: Cell lysates from HEK293T cells transfected with RC200512 using transfection reagent MegaTran 2.0 (Cat# [TT210002]).



Coomassie blue staining of purified CALHM2 protein (Cat# [TP300512]). The protein was produced from HEK293T cells transfected with CALHM2 cDNA clone (Cat# RC200512) using MegaTran 2.0 (Cat# [TT210002]).