

Product datasheet for RC200509L4

alpha 1 Antichymotrypsin (SERPINA3) (NM_001085) Human Tagged Lenti ORF Clone

Product data:

Product Type:	Expression Plasmids
Product Name:	alpha 1 Antichymotrypsin (SERPINA3) (NM_001085) Human Tagged Lenti ORF Clone
Tag:	mGFP
Symbol:	alpha 1 Antichymotrypsin
Synonyms:	AACT; ACT; GIG24; GIG25
Mammalian Cell Selection:	Puromycin
Vector:	pLenti-C-mGFP-P2A-Puro (PS100093)
E. coli Selection:	Chloramphenicol (34 ug/mL)
ORF Nucleotide Sequence:	The ORF insert of this clone is exactly the same as(RC200509).
Restriction Sites:	SgfI-MluI
Cloning Scheme:	

Cloning sites used for ORF Shuttling:



* The last codon before the Stop codon of the ORF.

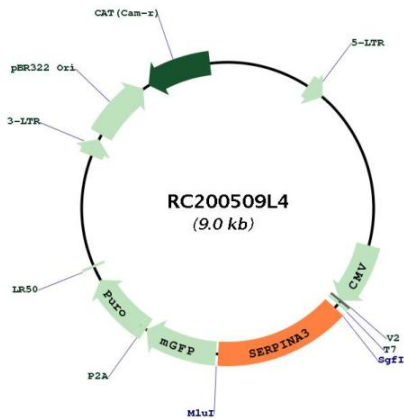
ACCN:	NM_001085
ORF Size:	1269 bp



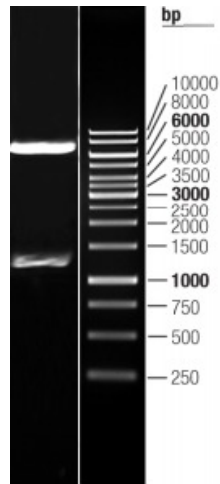
[View online »](#)

OTI Disclaimer:	The molecular sequence of this clone aligns with the gene accession number as a point of reference only. However, individual transcript sequences of the same gene can differ through naturally occurring variations (e.g. polymorphisms), each with its own valid existence. This clone is substantially in agreement with the reference, but a complete review of all prevailing variants is recommended prior to use. More info
OTI Annotation:	This clone was engineered to express the complete ORF with an expression tag. Expression varies depending on the nature of the gene.
Components:	The ORF clone is ion-exchange column purified and shipped in a 2D barcoded Matrix tube containing 10ug of transfection-ready, dried plasmid DNA (reconstitute with 100 ul of water).
Reconstitution Method:	<ol style="list-style-type: none"> 1. Centrifuge at 5,000xg for 5min. 2. Carefully open the tube and add 100ul of sterile water to dissolve the DNA. 3. Close the tube and incubate for 10 minutes at room temperature. 4. Briefly vortex the tube and then do a quick spin (less than 5000xg) to concentrate the liquid at the bottom. 5. Store the suspended plasmid at -20°C. The DNA is stable for at least one year from date of shipping when stored at -20°C.
RefSeq:	NM_001085.4
RefSeq Size:	1629 bp
RefSeq ORF:	1272 bp
Locus ID:	12
UniProt ID:	P01011
Cytogenetics:	14q32.13
Domains:	SERPIN
Protein Families:	Druggable Genome, Secreted Protein
MW:	47.65 kDa
Gene Summary:	The protein encoded by this gene is a member of the serpin family of proteins, a group of proteins that inhibit serine proteases. This gene is one in a cluster of serpin genes located on the q arm of chromosome 14. Polymorphisms in this protein appear to be tissue specific and influence protease targeting. Variations in this protein's sequence have been implicated in Alzheimer's disease, and deficiency of this protein has been associated with liver disease. Mutations have been identified in patients with Parkinson disease and chronic obstructive pulmonary disease. [provided by RefSeq, Jun 2020]

Product images:



Circular map for RC200509L4



Double digestion of RC200509L4 using SgfI and MluI