

Product datasheet for **RC200503**

Apolipoprotein D (APOD) (NM_001647) Human Tagged ORF Clone

Product data:

Product Type: Expression Plasmids
Product Name: Apolipoprotein D (APOD) (NM_001647) Human Tagged ORF Clone
Tag: Myc-DDK
Symbol: Apolipoprotein D
Mammalian Cell Selection: Neomycin
Vector: pCMV6-Entry (PS100001)
E. coli Selection: Kanamycin (25 ug/mL)
ORF Nucleotide Sequence: >RC200503 ORF sequence
Red=Cloning site Blue=ORF Green=Tags(s)

TTTTGTAATACGACTCACTATAGGGCGGCCGGAATTCGTCGACTGGATCCGGTACCGAGGAGATCTGCC
GCC**CGATCGCC**

ATGGTGATGCTGCTGCTGCTTTCCGCACTGGCTGGCCTCTTCGGTGCGGCAGAGGGACAAGCATTTC
ATCTTGGGAAGTGCCCAATCCTCCGGTGCAGGAGAATTTGACGTGAATAAGTATCTCGGAAGATGGTA
CGAAATTGAGAAGATCCCAACAACCTTTGAGAATGGACGCTGCATCCAGGCCAACTACTCACTAATGGAA
AACGAAAAGATCAAAGTGTTAAACCAGGAGTTGAGAGCTGATGGAAGTGAATCAAATCGAAGGTGAAG
CCACCCAGTTAACCTCACAGAGCCTGCCAAGCTGGAAGTTAAGTTTTCTGGTTATGCCATCGGCACC
GTACTGGATCCTGGCCACCGACTATGAGAACTATGCCCTCGTGTATTCTGTACCTGCATCATCCAATT
TTTCACGTGGATTTTGCTTGATCTTGCAAGAAACCCTAATCTCCCTCCAGAAACAGTGGACTCTCTAA
AAAATATCCTGACTTCTAATAACATTGATGTCAAGAAAATGACGGTCACAGACCAGGTGAAGTGCACCA
GCTCTCG

ACGCGTACGCGGCCGCTCGAGCAGAACTCATCTCAGAAGAGGATCTGGCAGCAATGATATCCTGGATT
ACAAGGATGACGACGATAAGGTTTAA

Protein Sequence: >RC200503 protein sequence
Red=Cloning site Green=Tags(s)

MVMLLLLLSALAGLFGAAEQAFHLGKCPNPPVQENFDVNKYLGRWYEIEKIPTTFENGRCIQANYSLME
NGKIKVLNQELRADGTVNQIEGEATPVNLTEPAKLEVKFSWFMPSPYWIATDYENYALVYSCTCIIQL
FHVDFAWILARNPNLPPETVDSLKNILTSNNIDVKKMTVTDQVNCPKLS

TRTRPLEQKLISEEDLAANDILDYKDDDDKV

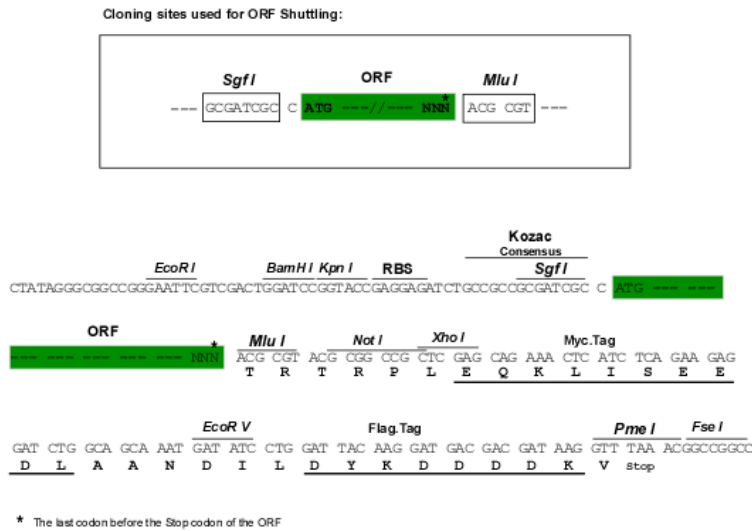
Chromatograms: https://cdn.origene.com/chromatograms/mk6075_a06.zip



[View online »](#)

Restriction Sites: SgfI-MluI

Cloning Scheme:



ACCN: NM_001647

ORF Size: 567 bp

OTI Disclaimer: Due to the inherent nature of this plasmid, standard methods to replicate additional amounts of DNA in E. coli are highly likely to result in mutations and/or rearrangements. Therefore, OriGene does not guarantee the capability to replicate this plasmid DNA. Additional amounts of DNA can be purchased from OriGene with batch-specific, full-sequence verification at a reduced cost. Please contact our customer care team at custsupport@origene.com or by calling 301.340.3188 option 3 for pricing and delivery.

The molecular sequence of this clone aligns with the gene accession number as a point of reference only. However, individual transcript sequences of the same gene can differ through naturally occurring variations (e.g. polymorphisms), each with its own valid existence. This clone is substantially in agreement with the reference, but a complete review of all prevailing variants is recommended prior to use. [More info](#)

OTI Annotation: This clone was engineered to express the complete ORF with an expression tag. Expression varies depending on the nature of the gene.

Components: The ORF clone is ion-exchange column purified and shipped in a 2D barcoded Matrix tube containing 10ug of transfection-ready, dried plasmid DNA (reconstitute with 100 ul of water).

Reconstitution Method:

1. Centrifuge at 5,000xg for 5min.
2. Carefully open the tube and add 100ul of sterile water to dissolve the DNA.
3. Close the tube and incubate for 10 minutes at room temperature.
4. Briefly vortex the tube and then do a quick spin (less than 5000xg) to concentrate the liquid at the bottom.
5. Store the suspended plasmid at -20°C. The DNA is stable for at least one year from date of shipping when stored at -20°C.

Note: Plasmids are not sterile. For experiments where strict sterility is required, filtration with 0.22um filter is required.

RefSeq: [NM_001647.4](#)

RefSeq Size: 1148 bp

RefSeq ORF: 570 bp

Locus ID: 347

UniProt ID: [P05090](#)

Cytogenetics: 3q29

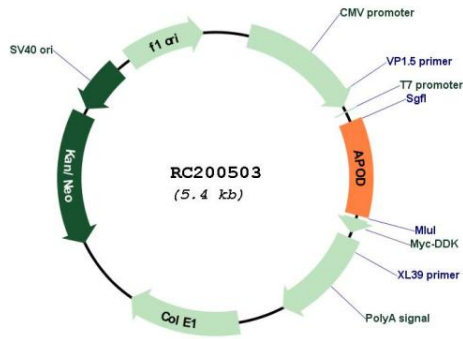
Domains: lipocalin

Protein Families: Secreted Protein

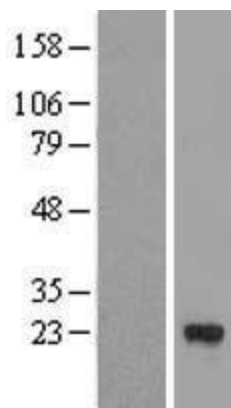
MW: 21.3 kDa

Gene Summary: This gene encodes a component of high density lipoprotein that has no marked similarity to other apolipoprotein sequences. It has a high degree of homology to plasma retinol-binding protein and other members of the alpha 2 microglobulin protein superfamily of carrier proteins, also known as lipocalins. This glycoprotein is closely associated with the enzyme lecithin:cholesterol acyltransferase - an enzyme involved in lipoprotein metabolism. [provided by RefSeq, Aug 2008]

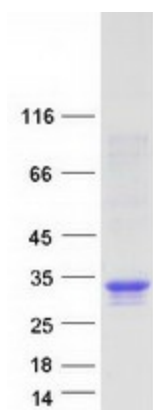
Product images:



Circular map for RC200503



Western blot validation of overexpression lysate (Cat# [LY419822]) using anti-DDK antibody (Cat# [TA50011-100]). Left: Cell lysates from untransfected HEK293T cells; Right: Cell lysates from HEK293T cells transfected with RC200503 using transfection reagent MegaTran 2.0 (Cat# [TT210002]).



Coomassie blue staining of purified APOD protein (Cat# [TP300503]). The protein was produced from HEK293T cells transfected with APOD cDNA clone (Cat# RC200503) using MegaTran 2.0 (Cat# [TT210002]).