

Product datasheet for RC200502

ARF4L (ARL4D) (NM_001661) Human Tagged ORF Clone

Product data:

Product Type: Expression Plasmids
Product Name: ARF4L (ARL4D) (NM_001661) Human Tagged ORF Clone
Tag: Myc-DDK
Symbol: ARF4L
Synonyms: ARF4L; ARL6
Mammalian Cell Selection: Neomycin
Vector: pCMV6-Entry (PS100001)
E. coli Selection: Kanamycin (25 ug/mL)
ORF Nucleotide Sequence: >RC200502 ORF sequence
 Red=Cloning site Blue=ORF Green=Tags(s)

TTTTGTAATACGACTCACTATAGGGCGCCGGGAATTCGTCGACTGGATCCGGTACCGAGGAGATCTGCC
 GCCCGATCGCC

ATGGGGAACCACTTGACTGAGATGGCGCCACTGCCTCCTCCTTCTTGCCCCACTTCCAAGCCCTGCATG
 TCGTGGTCATTGGGCTGGACTCTGCTGGAAAGACCTCCCTCCTTTACCGCCTCAAGTTCAAGGAGTTTGT
 CCAGAGTGTCCCCACAAAGGCTTCAACACCGAGAAGATCCGGGTGCCCTCGGGGATCGCGTGGCATC
 ACCTTCCAAGTGTGGGACGTGGGGGGCAGGAGAAGCTGCGACCACTGTGGCGCTTTATACCCGCCGA
 CAGACGGTCTAGTGTGGTGGACGCTGCGGAGGCTGAGCGGCTGGAGGAAGCAAGGTGGAGTTGCA
 CCGAATCAGCCGGCCTCGGACAACCAGGGCTGCCAGTCTGGTCTGGCCAACAAGCAGGACAGCCC
 GGGCACTGAGCGCTGCTGAGGTGGAGAAGAGGCTGGCAGTCCGAGAGCTAGCAGCCGCACTCTCACTC
 ATGTGCAAGGCTGCAGCGCTGTGGACGGTCTGGCCCTGCAGCAGGGCCTTGGAGCGCTCTATGAGATGAT
 CCTCAAGAGGAAGAAGGCAGCTCGGGTGGCAAGAAGAGACGG

ACGCGTACGCGGCCGCTCGAGCAGAACTCATCTCAGAAGAGGATCTGGCAGCAATGATATCCTGGATT
 ACAAGGATGACGACGATAAGGTTTAA

Protein Sequence: >RC200502 protein sequence
 Red=Cloning site Green=Tags(s)

MGNHLEMAPTASSFLPHFQALHVVVIGLDSAGKTSLLYRLKFKEFVQSVPTKGFNTEKIRVPLGSGRI
 TFQVWDVGGQEKLRPLWRSYTRRTDGLVFVDDAAEAERLEEAKVELHRI SRASDNQGVPLVLANKQDQP
 GALSAAEVEKRLAVRELAATLTHVQCSAVDGLGLQQGLERLYEMILKRKKAARGGKRR

TRTRPLEQKLISEEDLAANDILDYKDDDDKV



Chromatograms: https://cdn.origene.com/chromatograms/mk6396_g03.zip

Restriction Sites: SgfI-MluI

Cloning Scheme:



ACCN: NM_001661

ORF Size: 603 bp

OTI Disclaimer: The molecular sequence of this clone aligns with the gene accession number as a point of reference only. However, individual transcript sequences of the same gene can differ through naturally occurring variations (e.g. polymorphisms), each with its own valid existence. This clone is substantially in agreement with the reference, but a complete review of all prevailing variants is recommended prior to use. [More info](#)

OTI Annotation: This clone was engineered to express the complete ORF with an expression tag. Expression varies depending on the nature of the gene.

Components: The ORF clone is ion-exchange column purified and shipped in a 2D barcoded Matrix tube containing 10ug of transfection-ready, dried plasmid DNA (reconstitute with 100 ul of water).

- Reconstitution Method:**
1. Centrifuge at 5,000xg for 5min.
 2. Carefully open the tube and add 100ul of sterile water to dissolve the DNA.
 3. Close the tube and incubate for 10 minutes at room temperature.
 4. Briefly vortex the tube and then do a quick spin (less than 5000xg) to concentrate the liquid at the bottom.
 5. Store the suspended plasmid at -20°C. The DNA is stable for at least one year from date of shipping when stored at -20°C.

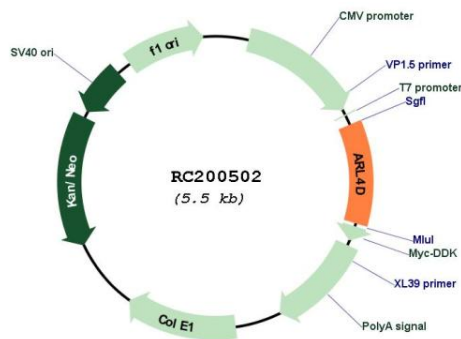
Note: Plasmids are not sterile. For experiments where strict sterility is required, filtration with 0.22um filter is required.

RefSeq: [NM_001661.4](#)

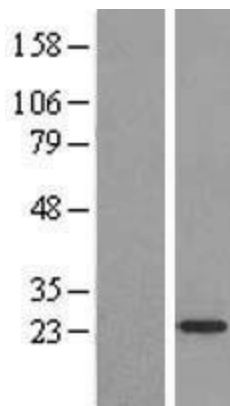
RefSeq Size: 1602 bp

RefSeq ORF:	606 bp
Locus ID:	379
UniProt ID:	P49703
Cytogenetics:	17q21.31
Domains:	RAS, RAB, SAR, ARF, arf
MW:	22.2 kDa
Gene Summary:	ADP-ribosylation factor 4D is a member of the ADP-ribosylation factor family of GTP-binding proteins. ARL4D is closely similar to ARL4A and ARL4C and each has a nuclear localization signal and an unusually high guanine nucleotide exchange rate. This protein may play a role in membrane-associated intracellular trafficking. Mutations in this gene have been associated with Bardet-Biedl syndrome (BBS). [provided by RefSeq, Jul 2008]

Product images:



Circular map for RC200502



Western blot validation of overexpression lysate (Cat# [LY419818]) using anti-DDK antibody (Cat# [TA50011-100]). Left: Cell lysates from untransfected HEK293T cells; Right: Cell lysates from HEK293T cells transfected with RC200502 using transfection reagent MegaTran 2.0 (Cat# [TT210002]).