

Product datasheet for **RC200501**

ARL2 (NM_001667) Human Tagged ORF Clone

Product data:

Product Type: Expression Plasmids
Product Name: ARL2 (NM_001667) Human Tagged ORF Clone
Tag: Myc-DDK
Symbol: ARL2
Synonyms: ARFL2
Mammalian Cell Selection: Neomycin
Vector: pCMV6-Entry (PS100001)
E. coli Selection: Kanamycin (25 ug/mL)
ORF Nucleotide Sequence: >RC200501 ORF sequence
Red=Cloning site Blue=ORF Green=Tags(s)

TTTTGTAATACGACTCACTATAGGGCGCCGGGAATTCGTCGACTGGATCCGGTACCGAGGAGATCTGCC
GCC**CGATCGCC**

ATGGGGCTCTGACCATTCTGAAGAAGATGAAGCAGAAAGAGCGGGAGCTGCGACTGCTCATGCTTGGCC
TGGACAATGCTGGAAAGACAACCATCCTGAAGAAGTTCATGGGGAGGACATCGACACCATCTCCCCAAC
GCTGGGCTTCAACATCAAGACCCCTGGAGACCCGAGGATCAAGCTGAACATCTGGGATGTGGGTGGCCAG
AAGTCCCTGCGGTCTACTGGCGAACTACTTTGAGAGCACCGATGGCCTCATCTGGGTAGTGGACAGCG
CAGACCCGAGCGCATGCAGGACTGCCAGCGGGAGCTCCAGAGCCTGCTGGTGGAGGAGCGCCTGGCCGG
AGCAACCCTCCTCATCTTTGCTAATAAGCAGGACCTGCCTGGAGCACTGTCTCTAACGCCATCCGCGAG
GTCTGGAGCTGGACTCCATCCGAGCCACCCTGGTGCATCCAGGGCTGCAGCGCCGTCACCGGGGAGA
ACCTGCTGCCGGGCATCGACTGGCTCCTGGATGACATTTCCAGCCGATTTTCACAGCTGAC

ACGCGTACGCGGCCGCTCGAGCAGAACTCATCTCAGAAGAGGATCTGGCAGCAAATGATATCCTGGATT
ACAAGGATGACGACGATAAGGTTTAA

Protein Sequence: >RC200501 protein sequence
Red=Cloning site Green=Tags(s)

MGLLTILKMKQKERELRLLMLGLDNAGKTTILKFNAGEDIDTISPTLGFNIKLEHRGFKLNIWDVGGQ
KSLRSYWRNYFESTDGLIWWVDSADRQRMQDCQRELQSLLEVERLAGATLLIFANKQDLPALSSNAIRE
VLELDSIRSHHWCIQGCSAVTGENLLPGIDWLLDDISSRIFTAD

TRTRPLEQKLISEEDLAANDILDYKDDDDKV

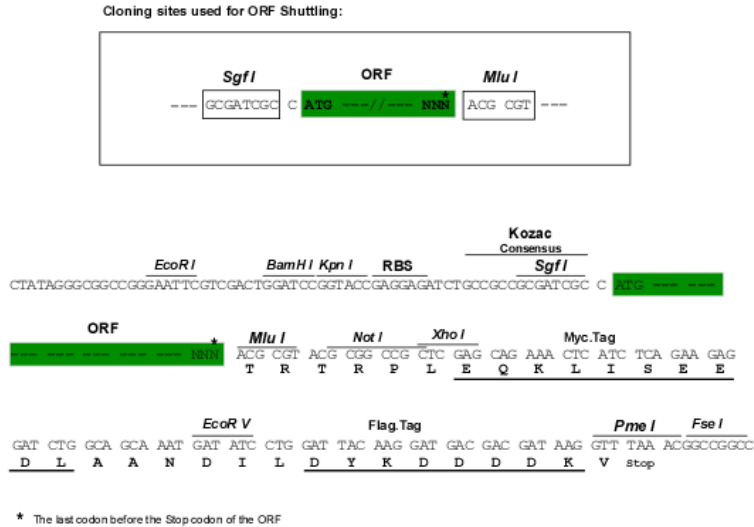
Chromatograms: https://cdn.origene.com/chromatograms/mk6386_h09.zip



[View online »](#)

Restriction Sites: SgfI-MluI

Cloning Scheme:



ACCN: NM_001667

ORF Size: 552 bp

OTI Disclaimer: The molecular sequence of this clone aligns with the gene accession number as a point of reference only. However, individual transcript sequences of the same gene can differ through naturally occurring variations (e.g. polymorphisms), each with its own valid existence. This clone is substantially in agreement with the reference, but a complete review of all prevailing variants is recommended prior to use. [More info](#)

OTI Annotation: This clone was engineered to express the complete ORF with an expression tag. Expression varies depending on the nature of the gene.

Components: The ORF clone is ion-exchange column purified and shipped in a 2D barcoded Matrix tube containing 10ug of transfection-ready, dried plasmid DNA (reconstitute with 100 ul of water).

Reconstitution Method:

1. Centrifuge at 5,000xg for 5min.
2. Carefully open the tube and add 100ul of sterile water to dissolve the DNA.
3. Close the tube and incubate for 10 minutes at room temperature.
4. Briefly vortex the tube and then do a quick spin (less than 5000xg) to concentrate the liquid at the bottom.
5. Store the suspended plasmid at -20°C. The DNA is stable for at least one year from date of shipping when stored at -20°C.

RefSeq: [NM_001667.4](#)

RefSeq Size: 993 bp

RefSeq ORF: 555 bp

Locus ID: 402

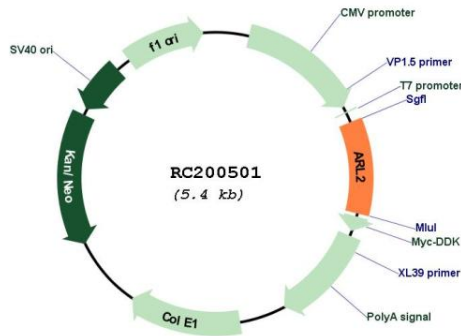
UniProt ID: [P36404](#)

Cytogenetics: 11q13.1

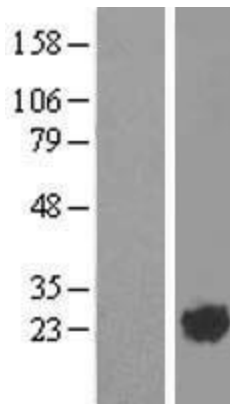
MW: 20.9 kDa

Gene Summary: This gene encodes a small GTP-binding protein of the RAS superfamily which functions as an ADP-ribosylation factor (ARF). The encoded protein is one of a functionally distinct group of ARF-like genes. [provided by RefSeq, Jul 2008]

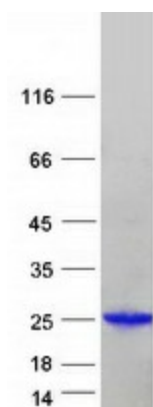
Product images:



Circular map for RC200501



Western blot validation of overexpression lysate (Cat# [LY419817]) using anti-DDK antibody (Cat# [TA50011-100]). Left: Cell lysates from untransfected HEK293T cells; Right: Cell lysates from HEK293T cells transfected with RC200501 using transfection reagent MegaTran 2.0 (Cat# [TT210002]).



Coomassie blue staining of purified ARL2 protein (Cat# [TP300501]). The protein was produced from HEK293T cells transfected with ARL2 cDNA clone (Cat# RC200501) using MegaTran 2.0 (Cat# [TT210002]).