

Product datasheet for **RC200498**

BTG1 (NM_001731) Human Tagged ORF Clone

Product data:

Product Type: Expression Plasmids
Product Name: BTG1 (NM_001731) Human Tagged ORF Clone
Tag: Myc-DDK
Symbol: BTG1
Synonyms: APRO2
Mammalian Cell Selection: Neomycin
Vector: pCMV6-Entry (PS100001)
E. coli Selection: Kanamycin (25 ug/mL)
ORF Nucleotide Sequence: >RC200498 ORF sequence
Red=Cloning site Blue=ORF Green=Tags(s)

TTTTGTAATACGACTCACTATAGGGCGCCGGGAATTCGTCGACTGGATCCGGTACCGAGGAGATCTGCC
GCC**CGATCGCC**

ATGCATCCCTTCTACACCCGGGCCGCCACCATGATAGGCGAGATCGCCGCCCGCTGTCCTTCATCTCCA
AGTTTCTCCGCACCAAGGGGCTCACGAGCGAGCGACAGCTGCAGACCTTCAGCCAGAGCCTGCAGGAGCT
GCTGGCAGAACATTATAAACATCACTGGTCCCAGAAAAGCCATGCAAGGGATCGGGTTACCGTTGTATT
CGCATCAACCATAAAATGGATCCTCTGATTGGACAGGCAGCACAGCGGATTGGACTGAGCAGTCAGGAGC
TGTTCCAGGCTTCTCCAAGTGAAGTCACTCTGGGTTGACCCCTATGAAGTGTCTACAGAATTGGAGA
GGATGGCTCCATCTGTGTGCTGTATGAAGCCTCACCAGCAGGAGGTAGCACTCAAAAACAGCACCAACGTG
CAAATGGTAGACAGCCGAATCAGCTGTAAGGAGGAACTTCTCTTGGGCAGAACGAGCCCTTCCAAAAACT
ACAATATGATGACTGTATCAGGT

ACGCGTACGCGGCCGCTCGAGCAGAACTCATCTCAGAAGAGGATCTGGCAGCAAATGATATCCTGGATT
ACAAGGATGACGACGATAAGGTTTAA

Protein Sequence: >RC200498 protein sequence
Red=Cloning site Green=Tags(s)
MHPFYTRAATMIGEIAAAVSFISKFLRTKGLT SERQLQTF S QSLQELLA EHYKHHWFPEKPKGSGYRCI
RINH KMDPLIGQAAQRIGLSSQELFRLLPSEL TLWVDPYEVSYRIGEDGSICVL YEASPAGGSTQNSTNV
QMVDSRISCKE LLLGRTSPSKNYNM TVSG

TRTRPLEQKLISEEDLAANDILDYKDDDDKV

Chromatograms: https://cdn.origene.com/chromatograms/mk6051_e10.zip



[View online »](#)

Restriction Sites: SgfI-MluI

Cloning Scheme:



ACCN: NM_001731

ORF Size: 513 bp

OTI Disclaimer: The molecular sequence of this clone aligns with the gene accession number as a point of reference only. However, individual transcript sequences of the same gene can differ through naturally occurring variations (e.g. polymorphisms), each with its own valid existence. This clone is substantially in agreement with the reference, but a complete review of all prevailing variants is recommended prior to use. [More info](#)

OTI Annotation: This clone was engineered to express the complete ORF with an expression tag. Expression varies depending on the nature of the gene.

Components: The ORF clone is ion-exchange column purified and shipped in a 2D barcoded Matrix tube containing 10ug of transfection-ready, dried plasmid DNA (reconstitute with 100 ul of water).

Reconstitution Method:

1. Centrifuge at 5,000xg for 5min.
2. Carefully open the tube and add 100ul of sterile water to dissolve the DNA.
3. Close the tube and incubate for 10 minutes at room temperature.
4. Briefly vortex the tube and then do a quick spin (less than 5000xg) to concentrate the liquid at the bottom.
5. Store the suspended plasmid at -20°C. The DNA is stable for at least one year from date of shipping when stored at -20°C.

RefSeq: [NM_001731.3](#)

RefSeq Size: 4704 bp

RefSeq ORF: 516 bp

Locus ID: 694

UniProt ID: [P62324](#)

Cytogenetics: 12q21.33

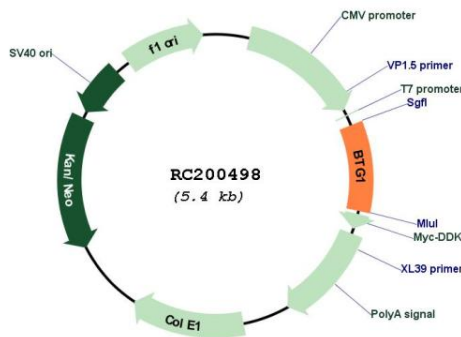
Domains: Anti_proliferat

Protein Families: Transcription Factors

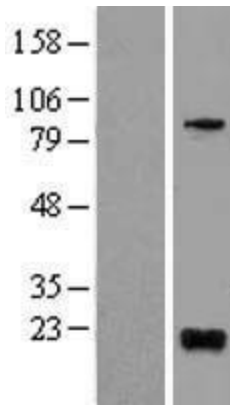
MW: 19.2 kDa

Gene Summary: This gene is a member of an anti-proliferative gene family that regulates cell growth and differentiation. Expression of this gene is highest in the G0/G1 phases of the cell cycle and downregulated when cells progressed through G1. The encoded protein interacts with several nuclear receptors, and functions as a coactivator of cell differentiation. This locus has been shown to be involved in a t(8;12)(q24;q22) chromosomal translocation in a case of B-cell chronic lymphocytic leukemia. [provided by RefSeq, Oct 2008]

Product images:



Circular map for RC200498



Western blot validation of overexpression lysate (Cat# [LY400652]) using anti-DDK antibody (Cat# [TA50011-100]). Left: Cell lysates from untransfected HEK293T cells; Right: Cell lysates from HEK293T cells transfected with RC200498 using transfection reagent MegaTran 2.0 (Cat# [TT210002]).