

Product datasheet for **RC200488**

Acidic Calponin (CNN3) (NM_001839) Human Tagged ORF Clone

Product data:

Product Type:	Expression Plasmids
Product Name:	Acidic Calponin (CNN3) (NM_001839) Human Tagged ORF Clone
Tag:	Myc-DDK
Symbol:	Acidic Calponin
Mammalian Cell Selection:	Neomycin
Vector:	pCMV6-Entry (PS100001)
E. coli Selection:	Kanamycin (25 ug/mL)
ORF Nucleotide Sequence:	>RC200488 ORF sequence Red=Cloning site Blue=ORF Green=Tags(s)

TTTTGTAATACGACTCACTATAGGGCGGCCGGGAATTCGTCGACTGGATCCGGTACCGAGGAGATCTGCC
GCC**CGATCGCC**

ATGACCCACTTCAACAAGGGCCCTTCCTATGGGCTCTCGGCCGAAGTCAAGAACAAGATTGCTTCCAAGT
ATGATCATCAGGCAGAAGAAGATCTTCGCAATTGGATAGAAGAGGTGACAGGCATGAGCATTGGCCCCAA
CTTCCAGCTGGGCTTAAGGATGGCATCATCCTCTGCGAACTTATAAACAAGCTACAGCCAGGCTCAGTG
AGAAGGTCAACGAGTCCTCACTGAAGTGGCCTCAGTTGGAGAATATTGGCAACTTTATTAAGCTATT
AGGCTTATGGTATGAAGCCACATGACATATTCGAAGCAAATGATCTTTTTGAGAATGAAACATGACCCA
GGTTCAGACTACTCTGGTGGCTCTAGCAGGTCTGGCTAAAACAAAAGGATTCCATACAACCATTGACATT
GGAGTTAAGTATGCAGAAAAACAAACAAGACGTTTTGATGAAGGAAAATAAAAGCTGGCCAAAGTGTA
TTGGTCTGCAGATGGGAACCAACAAATGTGCCAGCCAGGCAGGTATGACAGCTTACGGGACTAGGAGGCA
TCTTTATGATCCCAAAATGCAAAGTACAAACCTTTTGACCAGACCACAATTAGTCTGCAGATGGGCACT
AATAAAGGAGCCAGCCAGGCAGGATGTTAGCACCAGGTACCAGAAGAGACATCTATGATCAGAAGCTAA
CATTACAGCCGGTGGACAACCGACAATTTCCCTACAGATGGGTACCAACAAAGTTGCTTCCAGAAAGG
AATGAGTGTGATGGGCTTGGGCGCAAGTATATGATCCCAAATACTGTGCTGCTCTACAGAACCTGTC
ATTCACAACGGAAGCCAAGGAACAGGAACAAATGGTTCGAAATCAGTGATAGTGATTATCAGGCAGAAT
ACCTGATGAGTATCATGGCGAGTACCAGGATGACTACCCAGAGATTACCAATATAGCGACCAAGGCAT
TGATTAT

ACGCGTACGCGGCCGCTCGAGCAGAAACTCATCTCAGAAGAGGATCTGGCAGCAAATGATATCCTGGATT
ACAAGGATGACGACGATAAGGTTTAA



[View online »](#)

Protein Sequence: >RC200488 protein sequence
Red=Cloning site Green=Tags(s)

MTHFNKGPSYGLSAEVKNKIASKYDHAQEDLRNWIEEVTGMSIGPNFQLGLKDGIIICELINKLQPGSV
 KKVNESSLNWPQLENIGNFIKAIQAYGMKPHDIFEANLDFENGNTQVQTTLVALAGLAKTKGFHTTIDI
 GVKYAEKQTRRFDEGKLKAGQSVIGLQMGTNKCCASQAGMTAYGTRRHL YDPKMQTDKPFQDQTTISLQMG
 NKGASQAGMLAPGTRRDIYDQKLTLPVDNSTISLQMGTNKVASQKGMSSVYGLGRQVYDPKYCAAPTEPV
 IHNGSQGTGTNGSEISDSYQAEYPDEYHGEYQDDYPRDYQYSDQGIDY

TRTRPLEQKLISEEDLAANDILDYKDDDDKV

Chromatograms: https://cdn.origene.com/chromatograms/mk6565_d03.zip

Restriction Sites: SgfI-MluI

Cloning Scheme:

Cloning sites used for ORF Shuttling:



* The last codon before the Stop codon of the ORF

ACCN: NM_001839

ORF Size: 987 bp

OTI Disclaimer: The molecular sequence of this clone aligns with the gene accession number as a point of reference only. However, individual transcript sequences of the same gene can differ through naturally occurring variations (e.g. polymorphisms), each with its own valid existence. This clone is substantially in agreement with the reference, but a complete review of all prevailing variants is recommended prior to use. [More info](#)

OTI Annotation: This clone was engineered to express the complete ORF with an expression tag. Expression varies depending on the nature of the gene.

Components: The ORF clone is ion-exchange column purified and shipped in a 2D barcoded Matrix tube containing 10ug of transfection-ready, dried plasmid DNA (reconstitute with 100 ul of water).

Reconstitution Method:

1. Centrifuge at 5,000xg for 5min.
2. Carefully open the tube and add 100ul of sterile water to dissolve the DNA.
3. Close the tube and incubate for 10 minutes at room temperature.
4. Briefly vortex the tube and then do a quick spin (less than 5000xg) to concentrate the liquid at the bottom.
5. Store the suspended plasmid at -20°C. The DNA is stable for at least one year from date of shipping when stored at -20°C.

Note: Plasmids are not sterile. For experiments where strict sterility is required, filtration with 0.22um filter is required.

RefSeq: [NM_001839.5](#)

RefSeq Size: 2112 bp

RefSeq ORF: 990 bp

Locus ID: 1266

UniProt ID: [Q15417](#)

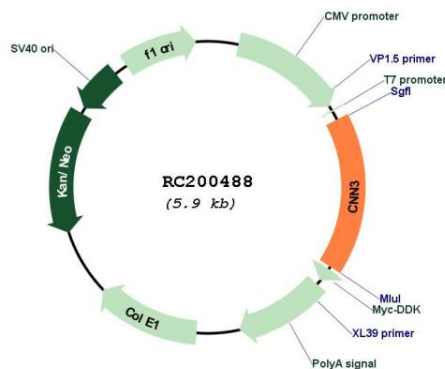
Cytogenetics: 1p21.3

Domains: calponin, CH

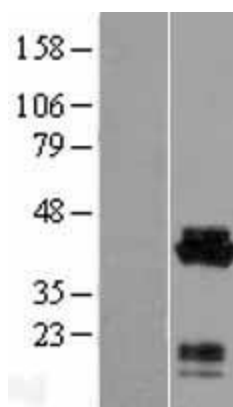
MW: 36.4 kDa

Gene Summary: This gene encodes a protein with a markedly acidic C terminus; the basic N-terminus is highly homologous to the N-terminus of a related gene, CNN1. Members of the CNN gene family all contain similar tandemly repeated motifs. This encoded protein is associated with the cytoskeleton but is not involved in contraction. [provided by RefSeq, Jul 2008]

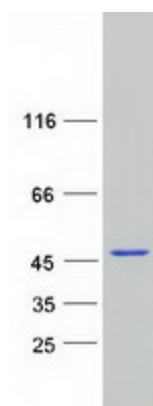
Product images:



Circular map for RC200488



Western blot validation of overexpression lysate (Cat# [LY419719]) using anti-DDK antibody (Cat# [TA50011-100]). Left: Cell lysates from untransfected HEK293T cells; Right: Cell lysates from HEK293T cells transfected with RC200488 using transfection reagent MegaTran 2.0 (Cat# [TT210002]).



Coomassie blue staining of purified CNN3 protein (Cat# [TP300488]). The protein was produced from HEK293T cells transfected with CNN3 cDNA clone (Cat# RC200488) using MegaTran 2.0 (Cat# [TT210002]).