

Product datasheet for RC200487

CNTF Receptor alpha (CNTFR) (NM_147164) Human Tagged ORF Clone

Product data:

Product Type:	Expression Plasmids
Product Name:	CNTF Receptor alpha (CNTFR) (NM_147164) Human Tagged ORF Clone
Tag:	Myc-DDK
Symbol:	CNTFR
Vector:	pCMV6-Entry (PS100001)
E. coli Selection:	Kanamycin (25 ug/mL)
Cell Selection:	Neomycin
ORF Nucleotide Sequence:	>RC200487 ORF sequence Red=Cloning site Blue=ORF Green=Tags(s)

TTTTGTAATACGACTCACTATAGGGCGGCCGGAATTCGTCGACTGGATCCGGTACCGAGGAGATCTGCC
GCCGCGATCGCC

ATGGCTGCTCCTGTCCCGTGGCCCTGCTGTGCTGTGCTTGCCGCCGCCGCCGAGTTGTCTACGCCCAGA
GACACAGTCCACAGGAGGCACCCCATGTGCAGTACGAGCGCCTGGGCTCTGACGTGACACTGCCATGTGG
GACAGCAAACCTGGGATGCTGCGGTGACGTGGCGGTAATGGGACAGACCTGGCCCTGACCTGCTCAAC
GGCTCTCAGCTGGTGCTCCATGGCCTGGAAGTGGCCACAGTGGCCTCTACGCCTGCTTCCACCGTGACT
CCTGGCACCTGCCACCAAGTCTGCTGCATGTGGGCTTGCCGCCGCCGGAGCCTGTGCTCAGCTGCCG
CTCCAACACTTACCCCAAGGGCTTCTACTGCAGCTGGCATCTGCCACCCCCACCTACATTCCAACACC
TTCAATGTGACTGTGCTGCATGGCTCCAAAATTATGGTCTGTGAGAAGGACCCAGCCCTCAAGAACCCT
GCCACATTCGCTACATGCACCTGTTCTCCACCATCAAGTACAAGGTCTCCATAAGTGTGAGCAATGCCCT
GGGCCACAATGCCACAGCTATCACCTTTGACGAGTTCACCATTGTGAAGCCTGATCCTCCAGAAAATGTG
GTAGCCCGGCCAGTGCCAGCAACCCTCGCCGGCTGGAGGTGACGTGGCAGACCCCTCGACCTGGCCTG
ACCCTGAGTCTTTTCTCTCAAGTCTTTCTGCGCTACCGACCCCTCATCTGGACAGTGGCAGCATGT
GGAGCTGTCCGACGGCACAGCACACCCATCACAGATGCCTACGCCGGAAGGAGTACATTATCCAGGTG
GCAGCCAAGGACAATGAGATTGGGACATGGAGTACTGGAGCGTAGCCGCCACGCTACGCCCTGGACTG
AGGAACCGCGACACCTCACACGGAGGCCAGGCTGCGGAGACCAGCAGCACCAGCTCCCTGGC
ACCCCCACCTACCACGAAGATCTGTGACCTGGGGAGCTGGGCAGCGCGGGGGACCCCTCGGCACCCCTT
TTGGTCAGCGTCCCCATCACTCTGGCCCTGGCTGCCGCTGCCGCACTGCCAGCAGTCTCTTGATC

ACGCGTACGCGGCCGCTCGAGCAGAACTCATCTCAGAAGAGGATCTGGCAGCAAATGATATCTGGATT
ACAAGGATGACGACGATAAGGTTTAA



[View online »](#)

Protein Sequence: >RC200487 protein sequence
 Red=Cloning site Green=Tags(s)

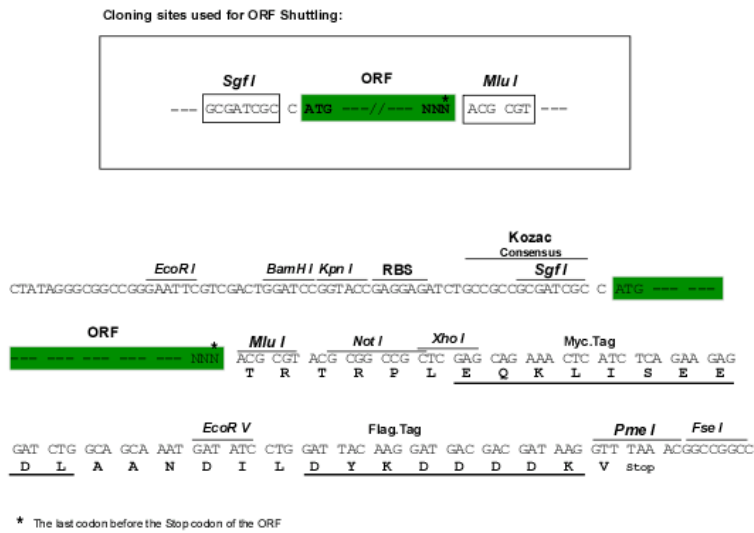
MAAPVPWACCAVLAAAAAVVYAQRHSPQEAPHVQYERLGSDVTLPCGTANWDAAVTWRVNGTDLAPDLLN
 GSQVLVHGLELGHSGLYACFHRDSWHLRHQVLLHVGLPPREPVLSCRNTYPKGFYCSWHLPTPTYIPNT
 FNVTVLHGSKIMVCEKDPALKNRCHIRYMHLFTIKYKVISVSNALGHNATAITFDEFTIVKPDPPENV
 VARPVPSNPRRLEVTWQTPSTWPDPEFPLKFFLRYPRLILDQWQHVELSDGTAHTITDAYAGKEYIIQV
 AAKDNEIGTWSDSVAHAHPWTEEPRLTTEAQA AETTTSTTSSLAPPPTTKICDPGELGSGGGPSAPF
 LVSPITLALAAAAATASLLI

TRTRP**LEQKLISEEDLA**ANDILDYKDDDDKV

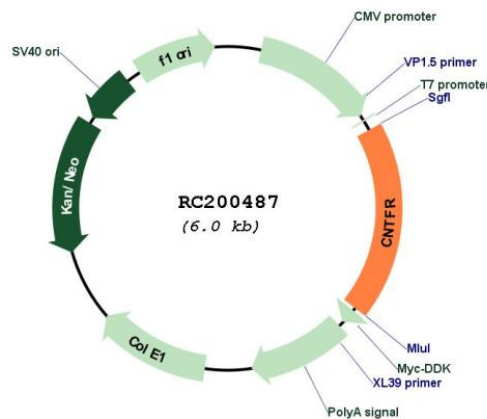
Chromatograms: https://cdn.origene.com/chromatograms/mk6052_e09.zip

Restriction Sites: Sgfl-MluI

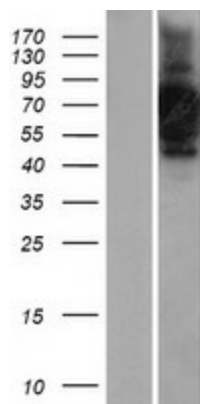
Cloning Scheme:



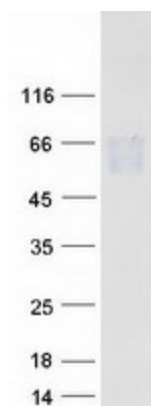
Plasmid Map:



ACCN:	NM_147164
ORF Size:	1116 bp
OTI Disclaimer:	The molecular sequence of this clone aligns with the gene accession number as a point of reference only. However, individual transcript sequences of the same gene can differ through naturally occurring variations (e.g. polymorphisms), each with its own valid existence. This clone is substantially in agreement with the reference, but a complete review of all prevailing variants is recommended prior to use. More info
OTI Annotation:	This clone was engineered to express the complete ORF with an expression tag. Expression varies depending on the nature of the gene.
Components:	The ORF clone is ion-exchange column purified and shipped in a 2D barcoded Matrix tube containing 10ug of transfection-ready, dried plasmid DNA (reconstitute with 100 ul of water).
Reconstitution Method:	<ol style="list-style-type: none">1. Centrifuge at 5,000xg for 5min.2. Carefully open the tube and add 100ul of sterile water to dissolve the DNA.3. Close the tube and incubate for 10 minutes at room temperature.4. Briefly vortex the tube and then do a quick spin (less than 5000xg) to concentrate the liquid at the bottom.5. Store the suspended plasmid at -20°C. The DNA is stable for at least one year from date of shipping when stored at -20°C.
RefSeq:	NM_147164.3
RefSeq Size:	2070 bp
RefSeq ORF:	1119 bp
Locus ID:	1271
UniProt ID:	P26992
Cytogenetics:	9p13.3
Domains:	ig, IGc2, IG, FN3
Protein Families:	Druggable Genome
Protein Pathways:	Cytokine-cytokine receptor interaction, Jak-STAT signaling pathway
MW:	40.6 kDa
Gene Summary:	This gene encodes a member of the type 1 cytokine receptor family. The encoded protein is the ligand-specific component of a tripartite receptor for ciliary neurotrophic factor, which plays a critical role in neuronal cell survival, differentiation and gene expression. Binding of ciliary neurotrophic factor to the encoded protein recruits the transmembrane components of the receptor, gp130 and leukemia inhibitory factor receptor, facilitating signal transduction. Single nucleotide polymorphisms in this gene may be associated with variations in muscle strength, as well as early onset of eating disorders. Alternatively spliced transcript variants have been observed for this gene. [provided by RefSeq, May 2011]

Product images:

Western blot validation of overexpression lysate (Cat# [LY403449]) using anti-DDK antibody (Cat# [TA50011-100]). Left: Cell lysates from untransfected HEK293T cells; Right: Cell lysates from HEK293T cells transfected with RC200487 using transfection reagent MegaTran 2.0 (Cat# [TT210002]).



Coomassie blue staining of purified CNTFR protein (Cat# [TP300487]). The protein was produced from HEK293T cells transfected with CNTFR cDNA clone (Cat# RC200487) using MegaTran 2.0 (Cat# [TT210002]).