

## Product datasheet for **RC200484**

### **CPT2 (NM\_000098) Human Tagged ORF Clone**

#### **Product data:**

Product Type:	Expression Plasmids
Product Name:	CPT2 (NM_000098) Human Tagged ORF Clone
Tag:	Myc-DDK
Symbol:	CPT2
Synonyms:	CPT1; CPTASE; IIAE4
Mammalian Cell Selection:	Neomycin
Vector:	pCMV6-Entry (PS100001)
E. coli Selection:	Kanamycin (25 ug/mL)



[View online »](#)

**ORF Nucleotide  
Sequence:**

>RC200484 ORF sequence  
 Red=Cloning site Blue=ORF Green=Tags(s)

TTTTGTAATACGACTCACTATAGGGCGGCCGGGAATTCGTGACTGGATCCGGTACCGAGGAGATCTGCC  
 GCC**CGCATCGCC**

ATGGTCCCCGCCTGCTGCTGCGCGCTGGCCCCGGGCCCCGCGTTGGTCCGGGAGCCCCAGTCGGC  
 CCTCAGCGCCGGCTCCGGGCCCGCCAGTACCTGCAGCCGAGCATCGTGCCACCATGCACTACCAGGA  
 CAGCCTGCCAGGCTGCCTATCCCAAACCTGAAGACACCATTAGGAGATACCTCAGTGCACAGAAAGCT  
 CTCTTGAATGATGGCCAGTTGAGAAAACAGAACAATTTTGAAGAGTTTGGAAATGGGATTGGAAAAG  
 AACTGCATGAGCAGCTGGTTGCTCTGGACAAACAGAATAAACATAACAAGCTACATTTTGGGACCCTGGTT  
 TGATATGTACCTATCTGCTCGAGACTCCGTTGTTCTGAACTTTAATCCATTTATGGCTTTCAATCCTGAC  
 CAAAAATCTGAGTATAATGACCAGCTCACCCGGGCAACCAACATGACTGTTTCTGCCATCCGGTTTCTGA  
 AGACACTCCGGGCTGGCCTTCTGGAGCCAGAAGTGTCCACTTGAACCCGCAAAAAGTGACACTATCAC  
 CTTCAAGAGACTCATACGCTTTGTGCCTCCTCTCTGCTGCTGGTATGGGGCTACCTGGTCAATGCGTAT  
 CCCTGGATATGCCAGTATTTTCGGCTTTTCAACTCAACTCGTTTACCCAAACCCAGTCGGGATGAAC  
 TCTTCACTGATGACAAGGCCAGACACCTCCTGGTCCCTAAGGAAAGGAAATTTTTATATCTTTGATGTCCT  
 GGATCAAGATGGGAACATTGTGAGCCCCCTCGAAATCCAGGCACATCTGAAGTACATTCTCTCAGACAGC  
 AGCCCCGCCCCGAGTTTCCCCTGGCATACTGACCAGTGAGAACCAGAGACATCTGGGCAGAGCTCAGGC  
 AGAAGCTGATGAGTAGTGGCAATGAGGAGAGCCTGAGGAAAGTGGACTCGGCAGTGTCTGTCTGCTGCT  
 AGATGACTTCCCATTAAAGACCTTGTCCACTTGTCCACAATATGCTGCATGGGGATGGCACAACCCG  
 TGGTTTGATAAATCCTTTAACCTCATTATCGCCAAGGATGGCTCTACTGCCATCCACTTTGAGCACTCTT  
 GGGGTGATGGTGTGGCAGTGTGATGATTTTTAATGAAGTATTTAAAGACAGCACTCAGACCCCTGCCGT  
 CACTCCACAGAGCCAGCCAGCTACCACTGACTCTACTGTACGGTGCAGAACTCAACTTCGAGCTGACT  
 GATGCCTTAAAGACTGGCATCACAGCTGCTAAGGAAAAGTTTGATGCCACCATGAAAACCCCTCACTATTG  
 ACTGCGTCCAGTTTCCAGAGAGGAGGCAAAGAATTCCTGAAGAAGCAAAGCTGAGCCCTGACGAGTTGC  
 CCAGCTGGCATTCCAGATGGCCTTCTGCGGCAGTACGGGCAGACAGTGGCCACCTACGAGTCTGTAGC  
 ACTGCCGATTCAAGCACGGCCGCACTGAGACCATCCGCCCGGCTCCGTCTATACAAAGAGGTGCTCTG  
 AGGCCTTTGTGAGGAGCCCTCCAGGCACAGTGTGGTGGTGTGAGCTTACGAGATGATGGTTGAGTGTCCAA  
 GTACCATGGCCAGCTGACCAAAGAAGCAGCAATGGGCCAGGGCTTTGACCGACACTGTTTGTCTGCGG  
 CATCTGGCAGCAGCCAAAGGGATCATCTTGCCTGAGCTCTACCTGGACCCTGCATACGGGCAGATAAACC  
 ACAATGTCTGTCCACGAGCACACTGAGCAGCCCAGCAGTGAACCTTGGGGGCTTTGCCCTGTGGTCTC  
 TGATGGCTTTGGTGTGGTATGCTGTTTATGACAACCTGGATAGGCTGCAATGTCTCTTCTACCCAGGC  
 CGCAATGCCCGGGAGTTTCTCCAATGTGTGGAGAAGGCCTTAGAAGACGTGTTTGTGCTTAGAAGGCA  
 AATCCATCAAAAGT

**ACGCGT**ACGCGGCCGCTCGAGCAGAACTCATCTCAGAAGAGGATCTGGCAGCAATGATATCCTGGATT  
 ACAAGGATGACGACGATAAGGTTTAA



**Reconstitution Method:**

1. Centrifuge at 5,000xg for 5min.
2. Carefully open the tube and add 100ul of sterile water to dissolve the DNA.
3. Close the tube and incubate for 10 minutes at room temperature.
4. Briefly vortex the tube and then do a quick spin (less than 5000xg) to concentrate the liquid at the bottom.
5. Store the suspended plasmid at -20°C. The DNA is stable for at least one year from date of shipping when stored at -20°C.

**RefSeq:** [NM\\_000098.3](#)

**RefSeq Size:** 3110 bp

**RefSeq ORF:** 1977 bp

**Locus ID:** 1376

**UniProt ID:** [P23786](#)

**Cytogenetics:** 1p32.3

**Domains:** Carn\_acyltransf

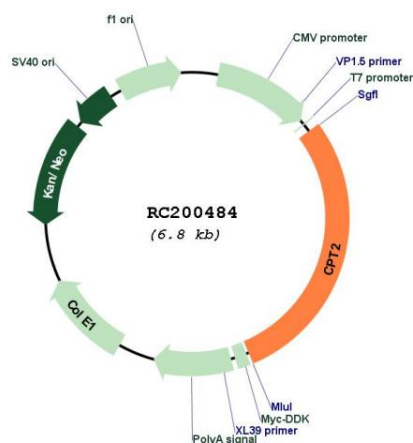
**Protein Families:** Druggable Genome

**Protein Pathways:** Fatty acid metabolism, PPAR signaling pathway

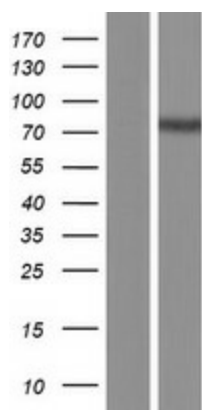
**MW:** 73.8 kDa

**Gene Summary:** The protein encoded by this gene is a nuclear protein which is transported to the mitochondrial inner membrane. Together with carnitine palmitoyltransferase I, the encoded protein oxidizes long-chain fatty acids in the mitochondria. Defects in this gene are associated with mitochondrial long-chain fatty-acid (LCFA) oxidation disorders. [provided by RefSeq, Jul 2008]

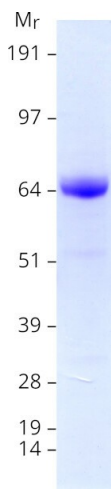
## Product images:



Circular map for RC200484



Western blot validation of overexpression lysate (Cat# [LY424932]) using anti-DDK antibody (Cat# [TA50011-100]). Left: Cell lysates from untransfected HEK293T cells; Right: Cell lysates from HEK293T cells transfected with RC200484 using transfection reagent MegaTran 2.0 (Cat# [TT210002]).



Coomassie blue staining of purified CPT2 protein (Cat# [TP300484]). The protein was produced from HEK293T cells transfected with CPT2 cDNA clone (Cat# RC200484) using MegaTran 2.0 (Cat# [TT210002]).