

Product datasheet for **RC200483**

CRMP1 (NM_001313) Human Tagged ORF Clone

Product data:

Product Type:	Expression Plasmids
Product Name:	CRMP1 (NM_001313) Human Tagged ORF Clone
Tag:	Myc-DDK
Symbol:	CRMP1
Synonyms:	CRMP-1; DPYSL1; DRP-1; DRP1; ULIP-3
Mammalian Cell Selection:	Neomycin
Vector:	pCMV6-Entry (PS100001)
E. coli Selection:	Kanamycin (25 ug/mL)



[View online »](#)

ORF Nucleotide Sequence:

>RC200483 ORF sequence
 Red=Cloning site Blue=ORF Green=Tags(s)

TTTTGTAATACGACTCACTATAGGGCGGCCGGAATTCGTCGACTGGATCCGGTACCGAGGAGATCTGCC
 GCC**CGGATCGCC**

ATGTCGTACCAGGGCAAGAAGAGCATCCCGCACATCACGAGTGACCGACTCCTCATCAAAGTGAGCGGA
 TCATCAACGATGACCAATCCCTTTATGCTGACGCTACCTGGAGGATGGACTTATCAAACAAATAGGAGA
 GAACTTAATCGTTCCTGGTGGAGTGAAGACCATTGAAGCCAACGGGCGGATGGTTATCCCGGAGGTATT
 GATGTCAACACGTACCTGCAGAAGCCCTCCAGGGGATGACTGCGGCTGATGACTTCTTCCAAGGGACCA
 GGGCGGCACTGGTGGGCGGACCACGATGATCATTGACCATGTTGTTCTGAACCTGGGTCCAGCCTACT
 GACCTCTTTCGAGAAGTGGCAGCAAGCAGCTGACACCAAATCCTGCTGTGATTACTCCCTCCACGTGGAC
 ATCACAAGCTGGTACGATGGCGTTCGGGAGGAGCTGGAGGTGCTGGTGCAGGACAAAGGCGTCAATTCT
 TCCAAGTCTACATGGCCTATAAGGATGTCTACCAAATGTCGACAGCCAGCTCTATGAAGCCTTTACCTT
 CCTTAAGGGCCTGGGAGCTGTGATCTTGGTCCATGCAGAAAATGGAGATTTGATAGCTCAGGAACAAAAG
 CGGATCCTGGAGATGGGCATCACGGGTCCCGAGGGCCATGCCCTGAGCAGACCTGAAGAGCTGGAGGCCG
 AGGCGGTGTTCCGGGCCATCACCATTGCGGGCCGGATCAACTGCCCTGTGTACATCACCAGGTCATGAG
 CAAGAGTGCAGCCGACATCATCGCTCTGGCCAGGAAGAAAGGGCCCTAGTTTTTGGAGAGCCCATTGCC
 GCCAGCCTGGGGACCGATGGCACCCATTACTGGAGCAAGAAGTGGGCCAAGGCTGCGGCGTTCTGACTT
 CCCCTCCCCTGAGCCCGGACCCTACCACGCCGACTACTTGACCTCCCTACTGGCCTGTGGGGACTTGCA
 GGTCACAGGCAGCGGCCACTGTCCCTACAGCACTGCCAGAAGGCGGTGGGCAAGGACAACCTTTACCCTG
 ATCCCCGAGGGTGTCAACGGGATAGAGGAGCGGATGACGGTCTGCTGGGACAAGGCGGTGCTACTGGCA
 AAATGGATGAGAACCAGTTTGTGCTGTACCAGCACCAAATGCAGCCAAGATCTTTAACCTGTACCCAAG
 GAAAGGGCGGATTGCCGTGGGCTCGGATGCCGAGTGGTCTCTGGGACCCCGACAAGTTGAAGACCATA
 ACAGCCAAAAGTCAAAAGTCGGCGGTGGAGTACAACATCTTCGAGGGTATGGAGTGCCACGCTCCCCAC
 TAGTGGTCATCAGCCAGGGCAAGATCGTCTTTGAAGACGGAAACATCAACGTCAACAAGGCGATGGGCCG
 CTTTATTCCGCGGAAGGCGTTCCCGGAGCACCTGTACCAGCGCTCAAAATCAGGAATAAGGTTTTTGA
 TTGCAAGGGGTTCCAGGGGCATGTATGACGGTCTGTGTACGAGGTACCAGCTACACCCAAATATGCAA
 CTCCCGCTCCTCAGCCAAATCTTCGCTTCTAAACACCAGCCCCACCCATCAGAAACCTCCACCAGTC
 CAACTTCAGTTATCAGGTGCCAGATAGATGACAACAATCCCAGGCGCACCGGCCACCGCATCGTGGCG
 CCCCTGGTGGCGCTCCAACATCACCAGCTCGGT

ACGCGTACGCGGCGGCTCGAGCAGAAACTCATCTCAGAAGAGGATCTGGCAGCAAATGATATCCTGGATT
 ACAAGGATGACGACGATAAGGTTTAA

Protein Sequence:

>RC200483 protein sequence
 Red=Cloning site Green=Tags(s)

MSYQGKKSIPHITSDRLLIKGGRIINDDQSLYADVYLEDLIKQIGENLIVPGGVKTIENGRMVIIPGGI
 DVNTYLQKPSQGMATAADFFQGTAAALVGGTMIIDHVVPEPGSSLLTSFEKWHEAADTKSCCDYSLHVD
 ITSWYDGVREELEVLVQDKGVNSFQVYVYKDVYQMSDSQLYEAFTFLKGLGAVILVHAENGLIAEQEK
 RILEMGITGPEGHALSRPEELEAEAVFRAITIAGRINCPVYITKVMKSAADIIALARKKGPLVFGPIA
 ASLGTGDTHYWSKNWAKAAAFVTSPLSPDPTPDYLTSLACGDLQVTGSGHCPYSTAQKAVGKDNFTL
 IPEGVNGIEERMTVVWDKAVATGKMDENQFVAVTSTNAAKIFNL YPRKGR IAVGSDADV IWDPKLKI
 TAKSHKSAVEYNI FEGMECHGSPLVVISQGKIVFEDGNINVNKGMGRFIPRKA FPEHLYQRVKIRNKVFG
 LQGVSRGMYDGPVYVATPKYATPAPSAKSSPSKHQPPPIRNLHQSNFSLSGAQIDDNNPRRTGHRIVA
 PGGRSNITSLG

TRTRPLEQKLISEEDLAANDILDYKDDDDKV

Chromatograms:

https://cdn.origene.com/chromatograms/mk6080_e12.zip

Restriction Sites:

Sgfl-Mlul

Cloning Scheme:


ACCN: NM_001313

ORF Size: 1716 bp

OTI Disclaimer: The molecular sequence of this clone aligns with the gene accession number as a point of reference only. However, individual transcript sequences of the same gene can differ through naturally occurring variations (e.g. polymorphisms), each with its own valid existence. This clone is substantially in agreement with the reference, but a complete review of all prevailing variants is recommended prior to use. [More info](#)

OTI Annotation: This clone was engineered to express the complete ORF with an expression tag. Expression varies depending on the nature of the gene.

Components: The ORF clone is ion-exchange column purified and shipped in a 2D barcoded Matrix tube containing 10ug of transfection-ready, dried plasmid DNA (reconstitute with 100 ul of water).

- Reconstitution Method:**
1. Centrifuge at 5,000xg for 5min.
 2. Carefully open the tube and add 100ul of sterile water to dissolve the DNA.
 3. Close the tube and incubate for 10 minutes at room temperature.
 4. Briefly vortex the tube and then do a quick spin (less than 5000xg) to concentrate the liquid at the bottom.
 5. Store the suspended plasmid at -20°C. The DNA is stable for at least one year from date of shipping when stored at -20°C.

RefSeq: [NM_001313.5](#)

RefSeq Size: 3074 bp

RefSeq ORF: 1719 bp

Locus ID: 1400

UniProt ID: [Q14194](#)

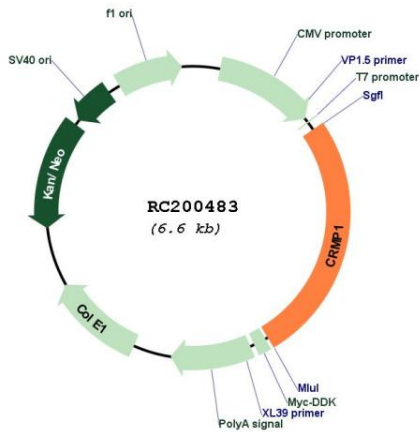
Cytogenetics: 4p16.2

Domains: Amidohydro_1

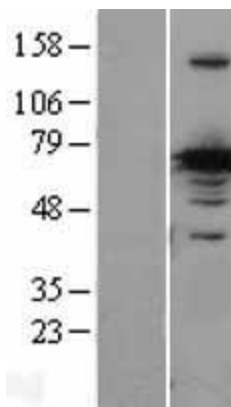
MW: 62.2 kDa

Gene Summary: This gene encodes a member of a family of cytosolic phosphoproteins expressed exclusively in the nervous system. The encoded protein is thought to be a part of the semaphorin signal transduction pathway implicated in semaphorin-induced growth cone collapse during neural development. Alternative splicing results in multiple transcript variants. [provided by RefSeq, Jul 2008]

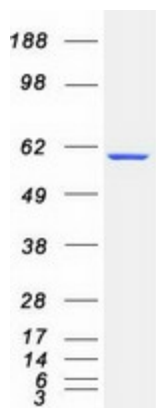
Product images:



Circular map for RC200483



Western blot validation of overexpression lysate (Cat# [LY400522]) using anti-DDK antibody (Cat# [TA50011-100]). Left: Cell lysates from untransfected HEK293T cells; Right: Cell lysates from HEK293T cells transfected with RC200483 using transfection reagent MegaTran 2.0 (Cat# [TT210002]).



Coomassie blue staining of purified CRMP1 protein (Cat# [TP300483]). The protein was produced from HEK293T cells transfected with CRMP1 cDNA clone (Cat# RC200483) using MegaTran 2.0 (Cat# [TT210002]).