

Product datasheet for **RC200479**

ELF4 (NM_001421) Human Tagged ORF Clone

Product data:

Product Type:	Expression Plasmids
Product Name:	ELF4 (NM_001421) Human Tagged ORF Clone
Tag:	Myc-DDK
Symbol:	ELF4
Synonyms:	ELFR; MEF
Mammalian Cell Selection:	Neomycin
Vector:	pCMV6-Entry (PS100001)
E. coli Selection:	Kanamycin (25 ug/mL)



[View online »](#)

ORF Nucleotide
Sequence:

>RC200479 ORF sequence
Red=Cloning site Blue=ORF Green=Tags(s)

TTTTGTAATACGACTCACTATAGGGCGGCCGGAATTCGTCGACTGGATCCGGTACCGAGGAGATCTGCC
GCCCGCATCGCC

ATGGCTATTACCCTACAGCCAGTGACCTGATCTTTGAGTTCGCAAGCAACGGGATGGATGATGATATCC
ACCAGCTGGAAGACCCCTCTGTGTTCCAGCTGTGATCGTGGAGCAGGTACCCTACCCTGATTTACTGCA
TCTGTA CTGGGACTGGAGTTGGACGACGTTTACAATGGCATCATAACAGACGGGACCTTGTGCATGACG
CAGGATCAGATCCTGGAAGGCAGTTTTTTGCTGACAGATGACAATGAGGCCACCTCGCACACCATGTCAA
CCGCGGAAGTCTTACTCAATATGGAGTCTCCAGCGATATCCTGGATGAGAAGCAGATCTTCAGTACCTC
CGAAATGCTTCCAGACTCGGACCCTGCACCAGCTGTCACCTCTGCCCACTACCTGTTTCTGCTCTGAG
CCCAGTGCCTGAACAGGGCGGGTGACACTAGTGACCAGGAGGGGCACTTCTGGAGGAGAAGGCCTCCA
GAGAGGAAAGTCCAAGAAGACTGGGAAATCAAAGAAGAGAATCCGGAAGACCAAGGCAACCGAAGTAC
CTCACCTGTCACCGCCAGCATCCCCATTAGGAAGAAATCAAAGGATGGCAAAGGCAGCACCATCTAT
CTGTGGGAGTTCTCTCTGGCTCTTCTGCAAGACAGAAACACCTGTCCCAAGTACATCAAGTGGACCCAGC
GAGAGAAAGGCATCTTCAAACCTGGTGGACTCCAAAGCTGTGTCCAAGCTGTGGGGGAAGCAGAAAAACAA
GCCTGACATGAACTATGAGACAATGGGGCGGGCACTAAGATACTACTACCAAAGAGGCATACTGGCCAAA
GTGGAAGGGCAGAGGCTGGTGTACCAGTTTAAGGAGATGCCCAAGGACCTGGTGGTCATTGAAGATGAGG
ATGAGAGCAGCGAAGCCACAGCAGCCCCACCTCAGGCCTCCACGGCCTCTGTGGCCTCTGCCAGTACCAC
CCGGCGAACCAGCTCCAGGTCTCATCCAGATCTGCCCCCAGGGCAAGGGCAGCTTCTTGGGAGAAG
CCAAAAATTGAGCATGTCGGTCTCCAGCCATCTGCGAGTCTGGAATTGGGACCGTCGCTAGACGAGGAGA
TCCCCACTACCTCCACCATGCTCGTCTCTCCAGCAGAGGGCCAGGTCAAGCTACCAAAGTGTGAGTGC
ATCTTCAGTGCCAGCAACATCCACCTAGGAGTGGCCCCGTGGGGTCTGGGCTCGGCCCTGACCCTGCAG
ACGATCCCACTGACCACGGTGTGACCAATGGGCCTCCTGCCAGTACTACTGCTCCCACTCAGCTCGTTC
TCCAGAGTGTTCAGCGCCTCTACTTTCAAGGACACCTTCACTTTGACGGCCTCTTTCCCCCTGAACGC
CAGTTTCCAAGACAGCCAGGTGGCAGCCCCAGGGGCTCCACTGATTCTCAGTGGCCTCCCCCACTTCTG
GCTGGGGCAACCGTCCGACCAACCCGGCGCCACCCACGGTCACAGGGGCTGGACCAGCAGGGCCAGCT
CTCAGCCCCCTGGGACTGTCATTGCTGCCTTATCAGGACTTCTGGCACTACAGCAGCCCCATAGGGTCAA
GGAGGGCCACTGAGGTCTCTCCTATGTTCAAGGATGTTGACGGGGGCCCCATGGAGGGGCTGCTG
GTTCTGAAGAGACCCTGAGGGAGCTCCTGAGAGATCAGGCTCATCTTCAGCCACTTCAAACCCAGGTGG
TTTCCAGGGGTTCCACAATCCGAGCCTTCTGGGCAACCAGACTTGTCTCCTCCAGCCGCCCCACTGT
TGGGCTGACCCAGTGGCTGAACTTGAAGTCTCCTCAGGCTCAGGGTCCCTGCTGATGGCTGAGCCTAGT
GTGACCACATCTGGGAGCCTTCTGACAAGATCCCCACCCAGCCCTTCTCCCAATTCAACCTACTT
CCCTCATTAAGATGGAGCCCCATGACATA

ACGCGTACGCGGGCCGCTCGAGCAGAACTCATCTCAGAAGAGGATCTGGCAGCAAATGATATCCTGGATT
ACAAGGATGACGACGATAAGGTTTAA

Protein Sequence: >RC200479 protein sequence
Red=Cloning site Green=Tags(s)

```
MAITLQPSDLIFEFASNGMDDDIHQLEDPSVFPVIVEQVYPDLLHLYSGLELDDVHNGIITDGTLCMT
QDQILEGSFLLTDDNEATSHTMSTAENVLLNMESPSDILDEKQIFSTSEMLPDSDPAPAVTLPNYLPASE
PDALNRAGDTSQDEGHSLEEKASREESAKKTGKSKKRIRKTKGNRSTSPVTDPSIPIRKKSCKDGGSTIY
LWEFLLALLQDRNTCPKYIKWTQREKGFKLVDKAVSKLWGWKQKNKPMNYETMGRALRYYYQRGILAK
VEGQRLVYQFKEMPKDLVVIIEDESEATAAPPQASTASVASASTTRRTSSRVSSRSAPQKGGSSSWEK
PKIQHVGLQPSASLELGPSTLDEEIPPTSTMLVSPAEGQVKLTKAVSASSVPSNIHLGVAPVSGSALTLQ
TIPLTTVLTNGPPASTTAPTQLVLQSVPAASTFKDTFTLQASFPLNASFQDSQVAAPGAPLILSGLPQLL
AGANRPTNPAPPTVTGAGPAGPSSQPPGTVIAAFIRTSGTTAAPRVKEGPLRSSSYVQGMVTGAPMEGLL
VPEETLRELLRDQAHLQPLPTQVVSARGSHNPSLLGNQTLSPPSRPTVGLTPVAEELSSGSGSLLMAEPS
VTTSGSLLTRSPTPAPFSPFNPTSLIKMEPHDI
```

TRTRPLEQKLISEEDLANDILDYKDDDDKV

Chromatograms: https://cdn.origene.com/chromatograms/mk6153_b03.zip

Restriction Sites: SgfI-MluI

Cloning Scheme:



ACCN: NM_001421

ORF Size: 1989 bp

OTI Disclaimer: The molecular sequence of this clone aligns with the gene accession number as a point of reference only. However, individual transcript sequences of the same gene can differ through naturally occurring variations (e.g. polymorphisms), each with its own valid existence. This clone is substantially in agreement with the reference, but a complete review of all prevailing variants is recommended prior to use. [More info](#)

OTI Annotation: This clone was engineered to express the complete ORF with an expression tag. Expression varies depending on the nature of the gene.

Components: The ORF clone is ion-exchange column purified and shipped in a 2D barcoded Matrix tube containing 10ug of transfection-ready, dried plasmid DNA (reconstitute with 100 ul of water).

Reconstitution Method:

1. Centrifuge at 5,000xg for 5min.
2. Carefully open the tube and add 100ul of sterile water to dissolve the DNA.
3. Close the tube and incubate for 10 minutes at room temperature.
4. Briefly vortex the tube and then do a quick spin (less than 5000xg) to concentrate the liquid at the bottom.
5. Store the suspended plasmid at -20°C. The DNA is stable for at least one year from date of shipping when stored at -20°C.

RefSeq: [NM_001421.4](#)

RefSeq Size: 4195 bp

RefSeq ORF: 1992 bp

Locus ID: 2000

UniProt ID: [Q99607](#)

Cytogenetics: Xq26.1

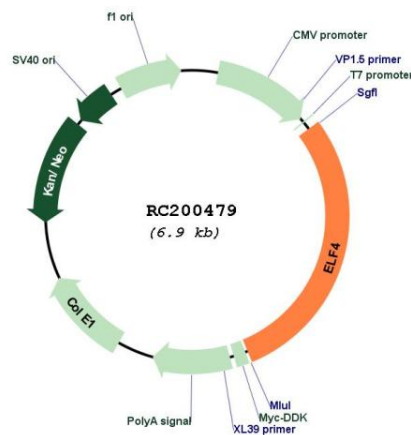
Domains: ETS

Protein Families: Transcription Factors

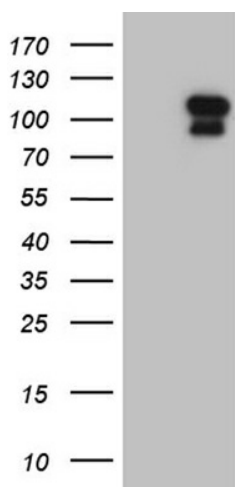
MW: 70.7 kDa

Gene Summary: The protein encoded by this gene is a transcriptional activator that binds and activates the promoters of the CSF2, IL3, IL8, and PRF1 genes. The encoded protein is involved in natural killer cell development and function, innate immunity, and induction of cell cycle arrest in naive CD8+ cells. Two transcript variants encoding the same protein have been found for this gene.[provided by RefSeq, Jan 2010]

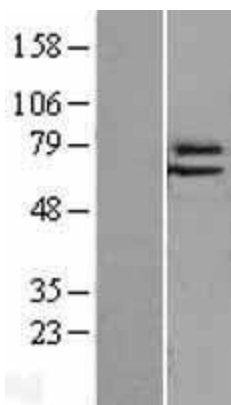
Product images:



Circular map for RC200479



HEK293T cells were transfected with the pCMV6-ENTRY control (Cat# [PS100001], Left lane) or pCMV6-ENTRY ELF4 (Cat# RC200479, Right lane) cDNA for 48 hrs and lysed. Equivalent amounts of cell lysates (5 ug per lane) were separated by SDS-PAGE and immunoblotted with anti-ELF4 (Cat# [TA810090])(1:2000). Positive lysates [LY400550] (100ug) and [LC400550] (20ug) can be purchased separately from OriGene.



Western blot validation of overexpression lysate (Cat# [LY426701]) using anti-DDK antibody (Cat# [TA50011-100]). Left: Cell lysates from untransfected HEK293T cells; Right: Cell lysates from HEK293T cells transfected with [RC226077] using transfection reagent MegaTran 2.0 (Cat# [TT210002]).