

Product datasheet for **RC200477**

FOXO1 (NM_002015) Human Tagged ORF Clone

Product data:

Product Type:	Expression Plasmids
Product Name:	FOXO1 (NM_002015) Human Tagged ORF Clone
Tag:	Myc-DDK
Symbol:	FOXO1
Synonyms:	FKH1; FKHR; FOXO1A
Mammalian Cell Selection:	Neomycin
Vector:	pCMV6-Entry (PS100001)
E. coli Selection:	Kanamycin (25 ug/mL)



[View online »](#)

ORF Nucleotide Sequence:

>RC200477 representing NM_002015
 Red=Cloning site Blue=ORF Green=Tags(s)

CTATAGGGCGGCCGGAATTCGTCTGACTGGATCCGGTACCGAGGAGATCTGCC
 GCC**CGGATCGCC**

ATGGCCGAGGCGCCTCAGGTGGTGGAGATCGACCCGACTTCGAGCCGCTGCCCCGCGCGCTCGTGCA
 CCTGGCCGCTGCCAGGCCGGAGTTTAGCCAGTCCAACCTCGGCCACCTCCAGCCCGCGCCGTCGGGCAG
 CGCGGCTGCCAACCCCGACGCCCGCGGGGCTGCCCTCGGCTCGGCTGCCGCTGTAGCGCCGACTTC
 ATGAGCAACCTGAGCTTCTGGAGGAGAGCGAGGACTTCCCGCAGGCGCCCGGCTCCGTGGCGGGCGG
 TGGCGGGCGGCGCCGCCCGGCCACCGGGGGCTGTGCGGGGACTTCAGGGCCCGGAGGCGGGCTG
 CCTGCACCCAGCGCCACCGCAGCCCCGCCCGGGCCGCTGTGCGAGCACCCGCCGTGCCCCCGCC
 GCCGCTGGGCCGCTCGCGGGGACGCCGCAAGAGCAGCTCGTCCCGCCGAACGCGTGGGGCAACCTGT
 CCTACGCCGACCTCATACCAAGGCCATCGAGAGCTCGGCGGAGAAGCGGCTCACGCTGTGCGAGATCTA
 CGAGTGGATGGTCAAGAGCGTGCCTACTTCAAGGATAAGGGTGACAGCAACAGCTCGGCGGGCTGGAAG
 AATTCAATTCTGTCATAATCTGTCCCTACACAGCAAGTTTATTCTGTGTGAGAATGAAGAACTGGAAAA
 GTTCTTGGTGGATGCTCAATCCAGAGGGTGGCAAGAGCGGAAATCTCTAGGAGAAGAGCTGCATCCAT
 GGACAACAACAGTAAATTTGCTAAGAGCCGAAGCCGAGCTGCCAAGAAGAAAGCATCTCTCCAGTCTGGC
 CAGGAGGGTGTGGGGACAGCCCTGGATCACAGTTTTTCCAAATGGCCTGCAAGCCCTGGCTCTCACAGCA
 ATGATGACTTTGATAACTGGAGTACATTTGCCCTCGAAGTACTCAAATGCTAGTACTATTAGTGGGAG
 ACTCTACCCATTATGACCGAACAGGATGATCTTGAGAAGGGGATGTGCATTCTATGGTGTACCCGCCA
 TCTGCCCAAAGATGGCCTCTACTTTACCCAGTCTGTCTGAGATAAGCAATCCCGAAAACATGGAAAATC
 TTTTGGATAATCTCAACCTTCTCATCACCAACATCATTAACTGTTTCGACCCAGTCTCACCTGGCAC
 CATGATGCAGCAGACGCCGTGCTACTCGTTTGCGCCACCAACACCAGTTTGAATTCACCCAGCCCAAC
 TACCAAAAATATACATATGGCCAATCCAGCATGAGCCCTTTGCCCCAGATGCCTATACAAAACACTTCAGG
 ACAATAAGTTCGAGTTATGGAGGTATGAGTCACTAAGTGTGCGCCTGGACTCTTGAAGGAGTTGCTGAC
 TTCTGACTCTCTCCCAATAATGACATTATGACACCAGTTGATCCTGGGGTAGCCAGCCCAACAGCCGG
 GTTCTGGGCCAGAACGTATGATGGGCCCTAATTCGGTCACTGCAACCTATGGCAGCCAGGTATCTCATA
 ACAAATGATGAATCCCAGTCCATACCCACCCTGGACATGCTCAGCAGACATCTGCAGTTAACGGGCG
 TCCCTGCCCCACACGGTAAGCACCATGCCCCACACCTCGGGTATGAACCGCCTGACCAAGTGAAGACA
 CCTGTACAAGTGCCTCTGCCCCACCCATGCAGATGAGTGCCTGGGGGCTACTCTCCGTGAGCAGCT
 GCAATGGCTATGGCAGAAATGGGCCTTCTCCACCAGGAGAAGCTCCAAGTACTGGATGGCATGTTTCAT
 TGAGCGCTTAGACTGTGACATGGAATCCATCATTTCGGAATGACCTCATGGATGGAGATACATTGGATTTT
 AACTTTGACAATGTGTTGCCCAACCAAGCTTCCACACAGTGTCAAGACAACGACACATAGCTGGGTGT
 CAGGC

CTCGAGCAGAAACTCATCTCTGAAGAGGATCTGGCAGCAAATGATATCCTGGATTACAAGGATGACGACG
 ATAAGGTTTAA

Protein Sequence: >RC200477 representing NM_002015
Red=Cloning site Green=Tags(s)

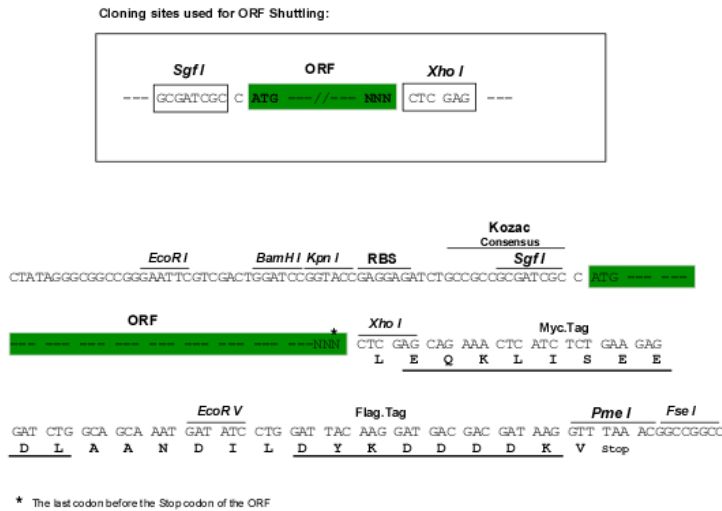
```
MAEAPQVVEIDPDFEPLPRPRSCWPLPRPEFSQNSATSSPAPSGSAAAANPDAAAGLPSASAAAVSADF
MSNLSLLEESDFPQAPGSVAAAIAAAAAAATGGLCGDFQGPEAGCLHPAPPQPPPPGPLSQHPPVPPA
AAGPLAGQPRKSSSRNNAWGNLSYADLITKAIESSAEKRLTLSQIYEWVKSVPYFKDKGDSNSSAGWK
NSIRHNL SLH SKF IRVQNEGTGKSSWMLNPEGGKSGKSPRRRAASMDNNSKFAKRSRAAKKASLQSG
QEGAGDSPGSQF SKWPASPGSHSNDDFDNWSTFRPRTSSNASTISGRLSPIMTEQDDLGEQDVHSMVYPP
SAAKMASTLPSLSEISNPENMENLLDNLNLLSSPTSLTVSTQSSPGTMMQQTPCYSFAPPNTSLNSPSN
YQKYTYGQSSMSPLQMPIQTLQDNKSSYGGMSQYNCAPGLLKELLTSDSPPHNDIMTPVDGVAQPNSR
VLGQNVMMGPNVMSTYGSQVSHNMMNPSSHTHPGHAQQTSAVNGRPLPHTVSTMPHTSGMNRLTQVKT
PVQVPLPHPMQMSALGGYSSVSSCNGYGRMGLLHQEKLPDLDGMFIERLDCMESIIRNDLMDGDTLDF
NFDNVLPNQSFPHSVKTTTHSWVSG
```

LEQKLI SEEDLAANDILDYKDDDDK V

Chromatograms: https://cdn.origene.com/chromatograms/mg2686_f02.zip

Restriction Sites: SgfI-XhoI

Cloning Scheme:



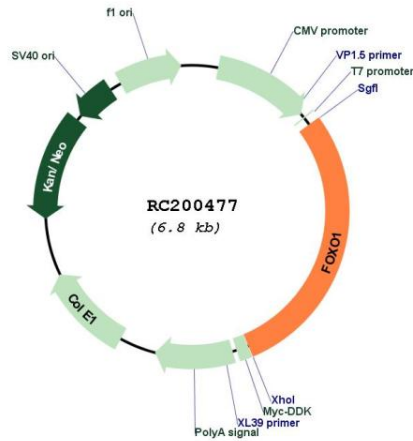
ACCN: NM_002015

ORF Size: 1965 bp

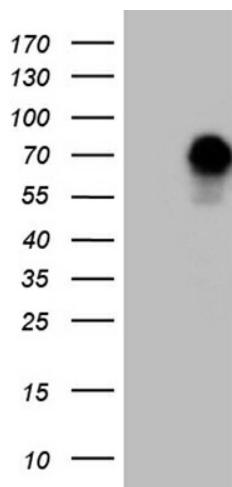
OTI Disclaimer:	Due to the inherent nature of this plasmid, standard methods to replicate additional amounts of DNA in E. coli are highly likely to result in mutations and/or rearrangements. Therefore, OriGene does not guarantee the capability to replicate this plasmid DNA. Additional amounts of DNA can be purchased from OriGene with batch-specific, full-sequence verification at a reduced cost. Please contact our customer care team at custsupport@origene.com or by calling 301.340.3188 option 3 for pricing and delivery.
	The molecular sequence of this clone aligns with the gene accession number as a point of reference only. However, individual transcript sequences of the same gene can differ through naturally occurring variations (e.g. polymorphisms), each with its own valid existence. This clone is substantially in agreement with the reference, but a complete review of all prevailing variants is recommended prior to use. More info
OTI Annotation:	This clone was engineered to express the complete ORF with an expression tag. Expression varies depending on the nature of the gene.
Components:	The ORF clone is ion-exchange column purified and shipped in a 2D barcoded Matrix tube containing 10ug of transfection-ready, dried plasmid DNA (reconstitute with 100 ul of water).
Reconstitution Method:	<ol style="list-style-type: none"> 1. Centrifuge at 5,000xg for 5min. 2. Carefully open the tube and add 100ul of sterile water to dissolve the DNA. 3. Close the tube and incubate for 10 minutes at room temperature. 4. Briefly vortex the tube and then do a quick spin (less than 5000xg) to concentrate the liquid at the bottom. 5. Store the suspended plasmid at -20°C. The DNA is stable for at least one year from date of shipping when stored at -20°C.
Note:	Plasmids are not sterile. For experiments where strict sterility is required, filtration with 0.22um filter is required.
RefSeq:	NM_002015.4
RefSeq Size:	5723 bp
RefSeq ORF:	1968 bp
Locus ID:	2308
UniProt ID:	Q12778
Cytogenetics:	13q14.11
Domains:	FH
Protein Families:	Druggable Genome, Transcription Factors
Protein Pathways:	Insulin signaling pathway, Pathways in cancer, Prostate cancer
MW:	69.5 kDa

Gene Summary:

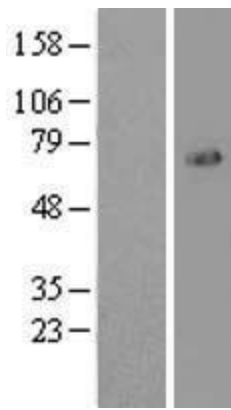
This gene belongs to the forkhead family of transcription factors which are characterized by a distinct forkhead domain. The specific function of this gene has not yet been determined; however, it may play a role in myogenic growth and differentiation. Translocation of this gene with PAX3 has been associated with alveolar rhabdomyosarcoma. [provided by RefSeq, Jul 2008]

Product images:


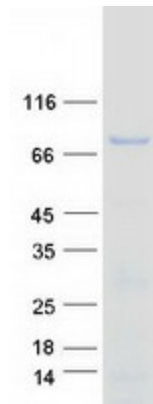
Circular map for RC200477



HEK293T cells were transfected with the pCMV6-ENTRY control (Cat# [PS100001], Left lane) or pCMV6-ENTRY FOXO1 (Cat# RC200477, Right lane) cDNA for 48 hrs and lysed. Equivalent amounts of cell lysates (5 ug per lane) were separated by SDS-PAGE and immunoblotted with anti-FOXO1 (Cat# [TA810652])(1:2000). Positive lysates [LY419586] (100ug) and [LC419586] (20ug) can be purchased separately from OriGene.



Western blot validation of overexpression lysate (Cat# [LY419586]) using anti-DDK antibody (Cat# [TA50011-100]). Left: Cell lysates from untransfected HEK293T cells; Right: Cell lysates from HEK293T cells transfected with RC200477 using transfection reagent MegaTran 2.0 (Cat# [TT210002]).



Coomassie blue staining of purified FOXO1 protein (Cat# [TP300477]). The protein was produced from HEK293T cells transfected with FOXO1 cDNA clone (Cat# RC200477) using MegaTran 2.0 (Cat# [TT210002]).