

## Product datasheet for **RC200476**

### **GALK1 (NM\_000154) Human Tagged ORF Clone**

#### Product data:

|                           |   |
|---------------------------|---|
| Product Type:             | Expression Plasmids   |
| Product Name:             | GALK1 (NM_000154) Human Tagged ORF Clone                          |
| Tag:                      | Myc-DDK   |
| Symbol:                   | GALK1   |
| Synonyms:                 | GALK; GK1; HEL-S-19   |
| Mammalian Cell Selection: | Neomycin  |
| Vector:                   | pCMV6-Entry (PS100001)  |
| E. coli Selection:        | Kanamycin (25 ug/mL)  |
| ORF Nucleotide Sequence:  | >RC200476 ORF sequence<br>Red=Cloning site Blue=ORF Green=Tags(s) |

TTTTGTAATACGACTCACTATAGGGCGGCCGGAATTCGTCGACTGGATCCGGTACCGAGGAGATCTGCC  
GCC**CGATCGCC**

ATGGCTGCTTTGAGACAGCCCCAGGTCGCGGAGCTGCTGGCCGAGGCCCGCGAGCCTCCGGGAGGAGT  
TCGGGGCCGAGCCCGAGCTGGCCGTGTACGCGCCGGCCGCTCAACCTCATCGGGGAACACACGGACTA  
CAACCAGGGCCTGGTGTGCCTATGGCTCTGGAGCTCATGACGGTGTAGTGGGCAGCCCCGCAAGGAT  
GGGCTGGTGTCTCTCCTACCACCTCTGAGGGTGCCGATGAGCCCCAGCGGCTGCAGTTTCCACTGCCCA  
CAGCCCAGCGCTCGCTGGAGCCTGGGACTCCTCGGTGGCCAACATGTCAAGGGAGTGATTCAGTACTA  
CCCAGCTGCCCCCTCCCTGGCTTCAGTGCAGTGGTGGTCACTAGTGCCTGGGGGGTGGCCTGTCC  
AGCTCAGCATCCTTGAAGTGGCCACGTACACCTTCTCCAGCAGCTCTGTCCAGACTCGGGCACAATAG  
CTGCCCGCGCCAGGTGTGTGAGCAGGCCGAGCACAGCTTCGAGGGATGCCCTGTGGCATCATGGACCA  
GTTTCATCTCACTTATGGGACAGAAAGGCCACGCGCTGCTCATTGACTGCAGGTCTTGGAGACCAGCCTG  
GTGCCACTCTCGGACCCCAAGCTGGCCGTGCTCATCACCACCTAATGTCCGCACTCCCTGGCCTCCA  
GCGAGTACCCTGTGCGCGCGCCAATGTGAAGAAGTGGCCGGGCGCTGGGCAAGGAAAGCCTCCGGGA  
GGTACAACCTGGAAGAGCTAGAGGCTGCCAGGGACCTGGTGAAGAAAGAGGGCTTCCGGCGGGCCCGCAC  
GTGGTGGGGGAGATTCGGCGCACGGCCAGGCAGCGGCCCTGAGACGTGGCGACTACAGAGCCTTTG  
GCCGCTCATGGTGGAGAGCCACCGCTCACTCAGAGACGACTATGAGGTGAGCTGCCAGAGCTGGACCA  
GCTGGTGGAGGCTGCGCTTGTGTGCTGGGGTTTATGGCAGCCGCATGACGGGCGGTGGCTTCGGTGGC  
TGCACGGTGACTGCTGGAGGCCTCCGCTGCTCCCCACGCCATGCGGCACATCCAGGAGCACTACGGCG  
GGACTGCCACCTTCTACCTCTCTCAAGCAGCCGATGGAGCCAAGGTGCTGTGCTT

**ACGCGT**ACGCGGCCGCTCGAGCAGAACTCATCTCAGAAGAGGATCTGGCAGCAATGATATCCTGGATT  
ACAAGGATGACGACGATAAGGTTTAA





**Reconstitution Method:**

1. Centrifuge at 5,000xg for 5min.
2. Carefully open the tube and add 100ul of sterile water to dissolve the DNA.
3. Close the tube and incubate for 10 minutes at room temperature.
4. Briefly vortex the tube and then do a quick spin (less than 5000xg) to concentrate the liquid at the bottom.
5. Store the suspended plasmid at -20°C. The DNA is stable for at least one year from date of shipping when stored at -20°C.

**RefSeq:** [NM\\_000154.1](#), [NP\\_000145.1](#)

**RefSeq Size:** 1361 bp

**RefSeq ORF:** 1179 bp

**Locus ID:** 2584

**UniProt ID:** [P51570](#)

**Cytogenetics:** 17q25.1

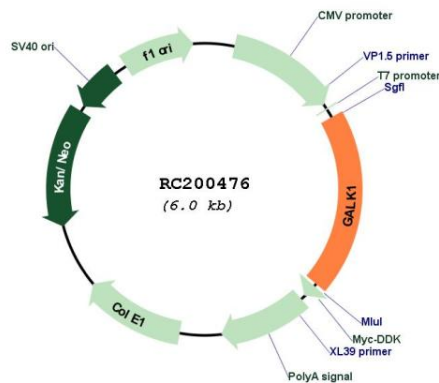
**Protein Families:** Druggable Genome

**Protein Pathways:** Amino sugar and nucleotide sugar metabolism, Galactose metabolism, Metabolic pathways

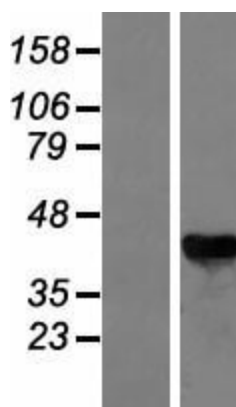
**MW:** 42.3 kDa

**Gene Summary:** Galactokinase is a major enzyme for the metabolism of galactose and its deficiency causes congenital cataracts during infancy and presenile cataracts in the adult population. [provided by RefSeq, Jul 2008]

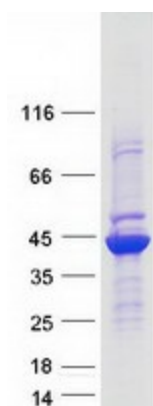
### Product images:



Circular map for RC200476



Western blot validation of overexpression lysate (Cat# [LY424894]) using anti-DDK antibody (Cat# [TA50011-100]). Left: Cell lysates from untransfected HEK293T cells; Right: Cell lysates from HEK293T cells transfected with RC200476 using transfection reagent MegaTran 2.0 (Cat# [TT210002]).



Coomassie blue staining of purified GALK1 protein (Cat# [TP300476]). The protein was produced from HEK293T cells transfected with GALK1 cDNA clone (Cat# RC200476) using MegaTran 2.0 (Cat# [TT210002]).