

## Product datasheet for **RC200459**

### ICAM2 (NM\_000873) Human Tagged ORF Clone

#### Product data:

Product Type:	Expression Plasmids
Product Name:	ICAM2 (NM_000873) Human Tagged ORF Clone
Tag:	Myc-DDK
Symbol:	ICAM2
Synonyms:	CD102
Mammalian Cell Selection:	Neomycin
Vector:	pCMV6-Entry (PS100001)
E. coli Selection:	Kanamycin (25 ug/mL)
ORF Nucleotide Sequence:	>RC200459 ORF sequence Red=Cloning site Blue=ORF Green=Tags(s)

TTTTGTAATACGACTCACTATAGGGCGGCCGGAATTCGTCGACTGGATCCGGTACCGAGGAGATCTGCC  
GCC**CGATCGCC**

ATGTCCTCTTTCGGTTACAGGACCCTGACTGTGGCCCTTTCACCCTGATCTGCTGTCCAGGATCGGATG  
AGAAGGTATTCGAGGTACACGTGAGGCCAAAGAAGCTGGCGGTTGAGCCAAAGGGTCCCTCGAGGTCAA  
CTGCAGCACCACCTGTAACCAGCCTGAAGTGGTGGTCTGGAGACCTCTCTAGATAAGATTCTGCTGGAC  
GAACAGGCTCAGTGGAAACATTACTTGGTCTCAAACATCTCCATGACACGGTCTCCAATGCCACTTCA  
CCTGCTCCGGGAAGCAGGAGTCAATGAATTC AACGTGACGCGTGTACCAGCCTCCAAGGCAGGTCATCCT  
GACACTGCAACCCACTTTGGTGGCTGTGGCAAGTCCCTTACCATTGAGTGCAGGGTGCCACCGTGGAG  
CCCCTGGACAGCCTCACCTCTTCTGTTCCGTGGCAATGAGACTCTGCACTATGAGACCTTCGGGAAGG  
CAGCCCTGCTCCGCAGGAGGCCACAGCCACATTC AACAGCACGGCTGACAGAGAGGATGGCCACCGCAA  
CTTCTCTGCCTGGCTGTGCTGGACTTGATGTCTCGCGGTGGCAACATCTTTCACAAACTCAGCCCCG  
AAGATGTTGGAGATCTATGAGCCTGTGTCGGACAGCCAGATGGTCATCATAGTCACGGTGGTGTCCGGTGT  
TGCTGTCCCTGTTGTCGATCTGTCTGCTCTGCTTTCATCTTCGCCAGCACTTGGCCAGCAGCGGAT  
GGGCACCTACGGGTGCGAGCGGCTTGGAGGAGGCTGCCCCAGGCCTTCCGGCCA

**ACGCGT**ACGCGGCCGCTCGAGCAGAAACTCATCTCAGAAGAGGATCTGGCAGCAAATGATATCCTGGATT  
ACAAGGATGACGACGATAAGGTTTAA



[View online »](#)

**Protein Sequence:** >RC200459 protein sequence  
Red=Cloning site Green=Tags(s)

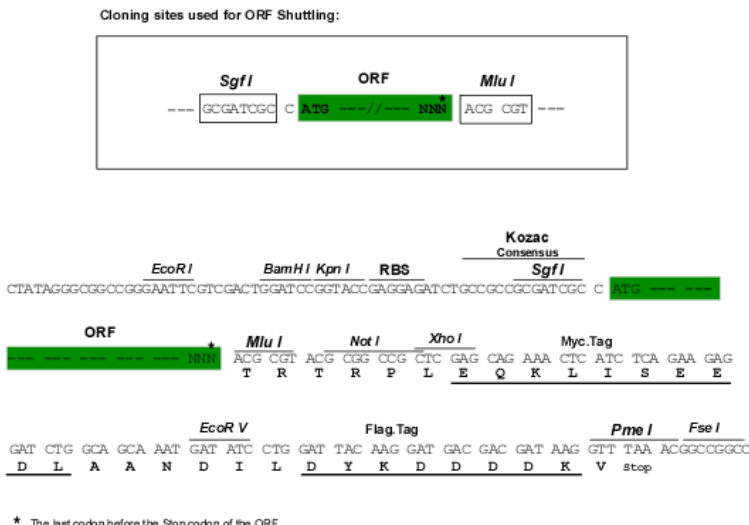
```
MSSFGYRTLTVLFTLICCPGSDKVFVHVRPKKLAVEPKGSLEVNCSTTCNQPEVGGLETSLDKILLD
EQAQWKHYLVSNISHDVTLQCHFTCSGKQESMNSNVSVYQPPRQVILTLQPTLVAVGKSFTIECRVPTVE
PLDSLTLFLFRGNETLHYETFGKAAPAQEATATFNSTADREDGHRNFSCLAVLDLMSRGGNIFHKHSAP
KMLEIYEPVSDSQMVIIIVTVSVLLSLFVTSVLLCFIFGQHLRQQRMGTGVVRAAWRRLLPQAFRP
```

TRTRPLEQKLISEEDLAANDILDYKDDDDKV

**Chromatograms:** [https://cdn.origene.com/chromatograms/mk6392\\_d08.zip](https://cdn.origene.com/chromatograms/mk6392_d08.zip)

**Restriction Sites:** SgfI-MluI

**Cloning Scheme:**



**ACCN:** NM\_000873

**ORF Size:** 825 bp

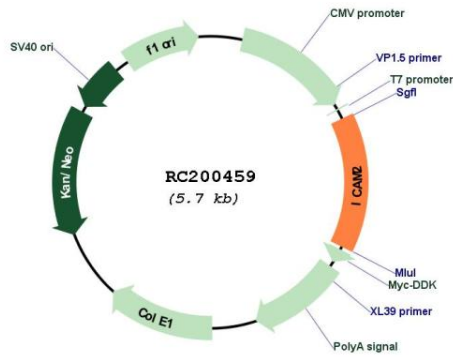
**OTI Disclaimer:** The molecular sequence of this clone aligns with the gene accession number as a point of reference only. However, individual transcript sequences of the same gene can differ through naturally occurring variations (e.g. polymorphisms), each with its own valid existence. This clone is substantially in agreement with the reference, but a complete review of all prevailing variants is recommended prior to use. [More info](#)

**OTI Annotation:** This clone was engineered to express the complete ORF with an expression tag. Expression varies depending on the nature of the gene.

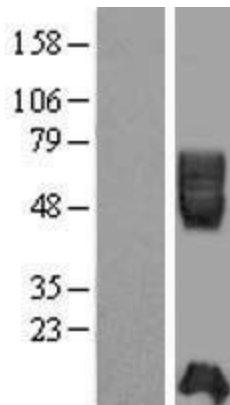
**Components:** The ORF clone is ion-exchange column purified and shipped in a 2D barcoded Matrix tube containing 10ug of transfection-ready, dried plasmid DNA (reconstitute with 100 ul of water).

<b>Reconstitution Method:</b>	<ol style="list-style-type: none"><li>1. Centrifuge at 5,000xg for 5min.</li><li>2. Carefully open the tube and add 100ul of sterile water to dissolve the DNA.</li><li>3. Close the tube and incubate for 10 minutes at room temperature.</li><li>4. Briefly vortex the tube and then do a quick spin (less than 5000xg) to concentrate the liquid at the bottom.</li><li>5. Store the suspended plasmid at -20°C. The DNA is stable for at least one year from date of shipping when stored at -20°C.</li></ol>
<b>RefSeq:</b>	<a href="#">NM_000873.3</a>
<b>RefSeq Size:</b>	1229 bp
<b>RefSeq ORF:</b>	828 bp
<b>Locus ID:</b>	3384
<b>UniProt ID:</b>	<a href="#">P13598</a>
<b>Cytogenetics:</b>	17q23.3
<b>Domains:</b>	ICAM_N
<b>Protein Families:</b>	ES Cell Differentiation/IPS, Transmembrane
<b>Protein Pathways:</b>	Cell adhesion molecules (CAMs), Natural killer cell mediated cytotoxicity
<b>MW:</b>	30.7 kDa
<b>Gene Summary:</b>	<p>The protein encoded by this gene is a member of the intercellular adhesion molecule (ICAM) family. All ICAM proteins are type I transmembrane glycoproteins, contain 2-9 immunoglobulin-like C2-type domains, and bind to the leukocyte adhesion LFA-1 protein. This protein may play a role in lymphocyte recirculation by blocking LFA-1-dependent cell adhesion. It mediates adhesive interactions important for antigen-specific immune response, NK-cell mediated clearance, lymphocyte recirculation, and other cellular interactions important for immune response and surveillance. Several transcript variants encoding the same protein have been found for this gene. [provided by RefSeq, Jul 2008]</p>

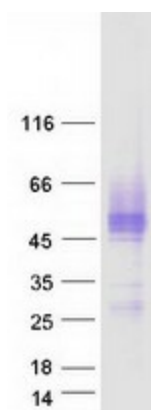
Product images:



Circular map for RC200459



Western blot validation of overexpression lysate (Cat# [LY424476]) using anti-DDK antibody (Cat# [TA50011-100]). Left: Cell lysates from untransfected HEK293T cells; Right: Cell lysates from HEK293T cells transfected with RC200459 using transfection reagent MegaTran 2.0 (Cat# [TT210002]).



Coomassie blue staining of purified ICAM2 protein (Cat# [TP300459]). The protein was produced from HEK293T cells transfected with ICAM2 cDNA clone (Cat# RC200459) using MegaTran 2.0 (Cat# [TT210002]).