

Product datasheet for **RC200458**

IRF5 (NM_032643) Human Tagged ORF Clone

Product data:

Product Type:	Expression Plasmids
Product Name:	IRF5 (NM_032643) Human Tagged ORF Clone
Tag:	Myc-DDK
Symbol:	IRF5
Synonyms:	SLEB10
Mammalian Cell Selection:	Neomycin
Vector:	pCMV6-Entry (PS100001)
E. coli Selection:	Kanamycin (25 ug/mL)



[View online »](#)

ORF Nucleotide Sequence:

>RC200458 ORF sequence
 Red=Cloning site Blue=ORF Green=Tags(s)

TTTTGTAATACGACTCACTATAGGGCGGCCGGAATTCGTCGACTGGATCCGGTACCGAGGAGATCTGCC
 GCC**CGCATCGCC**

ATGAACCAGTCCATCCCAGTGGCTCCCACCCACCCCGCGCTGCGGCTGAAGCCCTGGCTGGTGCC
 AGGTGAACAGCTGCCAGTACCCAGGCTTCAATGGGTCAACGGGAAAAGAAATTATTCTGCATCCCTG
 GAGGCATGCCACAAGGCATGGTCCCAGCCAGGACGGAGATAACACCATCTTCAAGGCCTGGGCAAGGAG
 ACAGGGAAATACACCGAAGGCGTGGATGAAGCCGATCCGGCCAAGTGAAGGCCAACCTGCGCTGTGCC
 TTAACAAGAGCCGGGACTTCCGCTCATCTACGACGGGCCCGGACATGCCACCTCAGCCCTACAAGAT
 CTACGAGGTCTGCTCCAATGGCCCTGCTCCACAGACTCCAGCCCTGAGGATTACTCTTTTGGTGCA
 GGAGAGGAGGAGAAGAGGAAGAGCTGCAGAGGATGTTGCCAAGCCTGAGCCTCACAGAGGATGTCA
 AGTGGCCGCCACTCTGCAGCCGCCACTCTGCGGCCCTACTCTGCAGCCGCCACTCTGCAGCCGCC
 CGTGGTGTGGTCCCCCTGCTCCAGACCCAGCCCCCTGGCTCCTCCCCTGGCAACCCTGCTGGCTT
 AGGGAGCTTCTCTGAGGTCTGGAGCCTGGGCCCTGCCTGCCAGCCTGCCCCCTGCAGGCGAACAGC
 TCCTGCCAGACCTGCTGATCAGCCCCACATGCTGCCTCTGACCGACCTGGAGATCAAGTTTCAGTACCG
 GGGGCGGCCACCCGGGCCCTCACCATCAGCAACCCCATGGCTGCCGGCTTTCTACAGCCAGCTGGAG
 GCCACCCAGGAGCAGGTGGAACCTTTCGGCCCCATAAGCCTGGAGCAAGTGCCTTCCCAGCCCTGAGG
 ACATCCCAGTGACAAGCAGCGCTTCTACACGAACCAGCTGCTGGATGTCTGGACCGGGGCTCATCT
 CCAGCTACAGGGCCAGGACCTTTATGCCATCCGCTGTGTGAGTCAAGGTGTTCTGGAGCGGCCCTGT
 GCCTCAGCCATGACTCATGCCCCAACCCATCCAGCGGGAGGTCAAGACCAAGCTTTTCAGCCTGGAGC
 ATTTTCTCAATGAGCTCATCTGTTCAAAAGGGCCAGACCAACACCCACCCTTCGAGATCTTCTT
 CTGCTTTGGGAAGAATGGCCTGACCGCAAACCCGAGAGAAGAAGCTCATTACTGTACAGGTGGTGCCT
 GTAGCAGCTCGACTGCTGCTGGAGATGTTCTCAGGGAGCTATCTTGGTCACTGATAGTATCCGGCTAC
 AGATCTCAAACCCAGACCTCAAAGACCGCATGGTGGAGCAATTCAAGGAGCTCCATCACATCTGGCAGTC
 CCAGCAGCGGTTGCAGCCTGTGGCCAGGCCCTCCTGGAGCAGGCCTTGGTGTGGCCAGGGGCCCTGG
 CCTATGCACCCAGCTGGCATGCAA

ACGCGTACGCGGCCGCTCGAGCAGAAACTCATCTCAGAAGAGGATCTGGCAGCAAATGATATCCTGGATT
 ACAAGGATGACGACGATAAGGTTTAA

Protein Sequence:

>RC200458 protein sequence
 Red=Cloning site Green=Tags(s)

MNQSI PVAPTPRRVRLKPWLVAQVNSCQYPLQWVNGEKKLFCIPWRHATRHGPSQDGDNTIFKAWAKE
 TGKYTEGVDEADPAKWKANLRCALNKSDFRLIYDGRDMPPQPYKIYEVCSNGPAPTDSQPPEDYSFGA
 GEEEEEEELQRMLPSLSLTEDVKWPPTLQPPTLRPPTLQPPTLQPPVVLGPPAPDPSPLAPPPGNPAGF
 RELLSEVLEPGPLPASLPPAGEQLLPDLLISPHMLPLTDLEIKFYRGRPPRALTISNPHGCRFLFYSQLE
 ATQEQVELFGPISLEQVRFSPEDIPSDKQRFYTNQLLDVLDRLILQLQGQDLYAIRLCQCKVFWSGPC
 ASAHDSNPNIQREVTKLFSLEHFLNELILFQKQNTNTPPPFEIFFCFGEEWPDRKPREKKLITVQVVP
 VAARLLLEMFSGELSWASDSIRLQISNPDLKDRMVEQFKELHHIWQSQRQLQPVAQAPPAGLGVGQGPW
 PMHPAGMQ

TRTRPLEQKLI SEEDLAANDILDYKDDDDKV

Chromatograms:

https://cdn.origene.com/chromatograms/mk6154_a10.zip

Restriction Sites:

Sgfl-Mlul

Cloning Scheme:


ACCN: NM_032643

ORF Size: 1494 bp

OTI Disclaimer: The molecular sequence of this clone aligns with the gene accession number as a point of reference only. However, individual transcript sequences of the same gene can differ through naturally occurring variations (e.g. polymorphisms), each with its own valid existence. This clone is substantially in agreement with the reference, but a complete review of all prevailing variants is recommended prior to use. [More info](#)

OTI Annotation: This clone was engineered to express the complete ORF with an expression tag. Expression varies depending on the nature of the gene.

Components: The ORF clone is ion-exchange column purified and shipped in a 2D barcoded Matrix tube containing 10ug of transfection-ready, dried plasmid DNA (reconstitute with 100 ul of water).

- Reconstitution Method:**
1. Centrifuge at 5,000xg for 5min.
 2. Carefully open the tube and add 100ul of sterile water to dissolve the DNA.
 3. Close the tube and incubate for 10 minutes at room temperature.
 4. Briefly vortex the tube and then do a quick spin (less than 5000xg) to concentrate the liquid at the bottom.
 5. Store the suspended plasmid at -20°C. The DNA is stable for at least one year from date of shipping when stored at -20°C.

Note: Plasmids are not sterile. For experiments where strict sterility is required, filtration with 0.22um filter is required.

RefSeq: [NM_032643.4](#)

RefSeq Size: 2778 bp

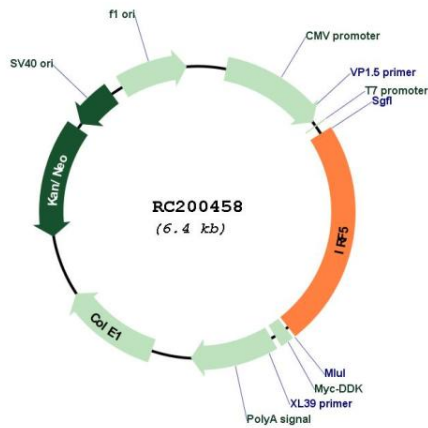
RefSeq ORF: 1497 bp

Locus ID: 3663

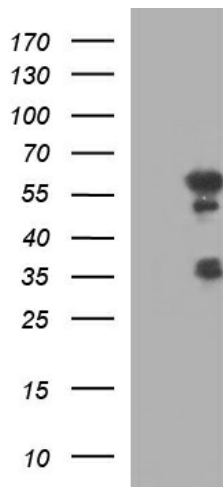
UniProt ID: [Q13568](#)
Cytogenetics: 7q32.1
Domains: IRF
Protein Families: Transcription Factors
Protein Pathways: Toll-like receptor signaling pathway
MW: 56 kDa

Gene Summary: This gene encodes a member of the interferon regulatory factor (IRF) family, a group of transcription factors with diverse roles, including virus-mediated activation of interferon, and modulation of cell growth, differentiation, apoptosis, and immune system activity. Members of the IRF family are characterized by a conserved N-terminal DNA-binding domain containing tryptophan (W) repeats. Alternative promoter use and alternative splicing result in multiple transcript variants, and a 30-nt indel polymorphism (SNP rs60344245) can result in loss of a 10-aa segment. [provided by RefSeq, Dec 2016]

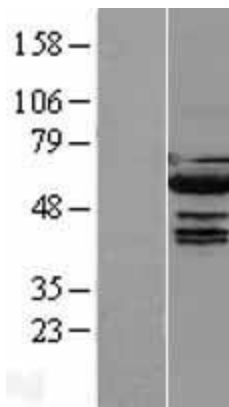
Product images:



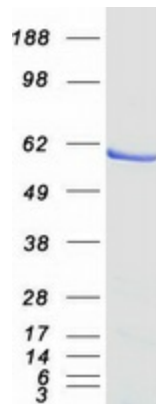
Circular map for RC200458



HEK293T cells were transfected with the pCMV6-ENTRY control (Cat# [PS100001], Left lane) or pCMV6-ENTRY IRF5 (Cat# RC200458, Right lane) cDNA for 48 hrs and lysed. Equivalent amounts of cell lysates (5 ug per lane) were separated by SDS-PAGE and immunoblotted with anti-IRF5 (Cat# [TA507252]). Positive lysates [LY403185] (100ug) and [LC403185] (20ug) can be purchased separately from OriGene.



Western blot validation of overexpression lysate (Cat# [LY420653]) using anti-DDK antibody (Cat# [TA50011-100]). Left: Cell lysates from untransfected HEK293T cells; Right: Cell lysates from HEK293T cells transfected with [RC215781] using transfection reagent MegaTran 2.0 (Cat# [TT210002]).



Coomassie blue staining of purified IRF5 protein (Cat# [TP300458]). The protein was produced from HEK293T cells transfected with IRF5 cDNA clone (Cat# RC200458) using MegaTran 2.0 (Cat# [TT210002]).