

Product datasheet for **RC200456L2V**

LAMP2 (NM_013995) Human Tagged ORF Clone Lentiviral Particle

Product data:

Product Type:	Lentiviral Particles
Product Name:	LAMP2 (NM_013995) Human Tagged ORF Clone Lentiviral Particle
Symbol:	LAMP2
Synonyms:	CD107b; DND; LAMP-2; LAMPB; LGP-96; LGP110
Mammalian Cell Selection:	None
Vector:	pLenti-C-mGFP (PS100071)
Tag:	mGFP
ACCN:	NM_013995
ORF Size:	1230 bp
ORF Nucleotide Sequence:	The ORF insert of this clone is exactly the same as(RC200456).
OTI Disclaimer:	The molecular sequence of this clone aligns with the gene accession number as a point of reference only. However, individual transcript sequences of the same gene can differ through naturally occurring variations (e.g. polymorphisms), each with its own valid existence. This clone is substantially in agreement with the reference, but a complete review of all prevailing variants is recommended prior to use. More info
OTI Annotation:	This clone was engineered to express the complete ORF with an expression tag. Expression varies depending on the nature of the gene.
RefSeq:	NM_013995.1
RefSeq Size:	4076 bp
RefSeq ORF:	1233 bp
Locus ID:	3920
UniProt ID:	P13473
Cytogenetics:	Xq24
Domains:	Lamp
Protein Families:	Druggable Genome, ES Cell Differentiation/IPS, Transmembrane



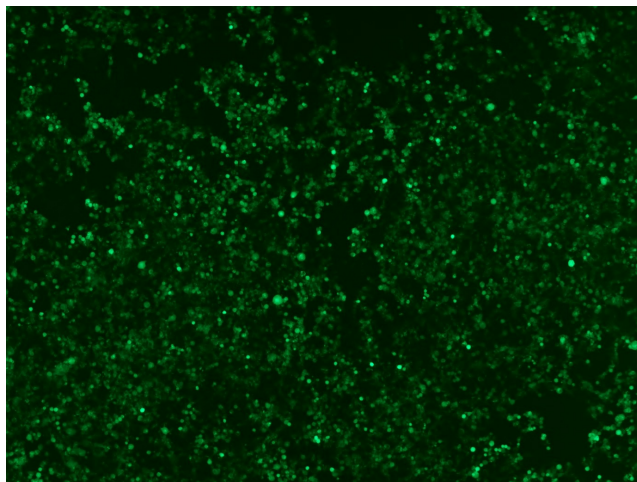
[View online »](#)

Protein Pathways: Lysosome

MW: 45 kDa

Gene Summary: The protein encoded by this gene is a member of a family of membrane glycoproteins. This glycoprotein provides selectins with carbohydrate ligands. It may play a role in tumor cell metastasis. It may also function in the protection, maintenance, and adhesion of the lysosome. Alternative splicing of this gene results in multiple transcript variants encoding distinct proteins. [provided by RefSeq, Jul 2008]

Product images:



[RC200456L2] was used to prepare Lentiviral particles using [TR30037] packaging kit. HEK293T cells were transduced with RC200456L2V particle to overexpress human LAMP2-mGFP fusion protein.