

Product datasheet for **RC200456**

LAMP2 (NM_013995) Human Tagged ORF Clone

Product data:

| | |
|---------------------------|---|
| Product Type: | Expression Plasmids |
| Product Name: | LAMP2 (NM_013995) Human Tagged ORF Clone |
| Tag: | Myc-DDK |
| Symbol: | LAMP2 |
| Synonyms: | CD107b; DND; LAMP-2; LAMPB; LGP-96; LGP110 |
| Mammalian Cell Selection: | Neomycin |
| Vector: | pCMV6-Entry (PS100001) |
| E. coli Selection: | Kanamycin (25 ug/mL) |
| ORF Nucleotide Sequence: | >RC200456 ORF sequence Red=Cloning site Blue=ORF Green=Tags(s) |

TTTTGTAATACGACTCACTATAGGGCGGCCGGAATTCGTCGACTGGATCCGGTACCGAGGAGATCTGCC
GCC**CGATCGCC**

ATGGTGTGCTTCCGCTCTTCCCGGTTCCGGGCTCAGGGCTCGTTCTGGTCTGCCTAGTCTGGGAGCTG
TGCGGTCTTATGCATTGGAACCTAATTTGACAGATTGAGAAAATGCCACTTGCCTTTATGCAAAATGGCA
GATGAATTTACAGTTCGCTATGAACTACAAATAAACTTATAAACTGTAACCATTTAGACCATGCGC
ACTGTGACATATAATGGAAGCATTGTGGGGATGATCAGAATGGTCCCAAAATAGCAGTGCAGTTCGGAC
CTGGCTTTTCTGGATTGCGAATTTTACCAAGGCAGCATCTACTTATTCAATTGACAGCGTCTCATTTC
CTACAACACTGGTGATAACACAACATTTCTGATGCTGAAGATAAAGGAATTCCTACTGTTGATGAACCT
TTGGCCATCAGAATTCATTGAATGACCTTTTATAGATGCAATAGTTTATCAACTTTGGAAAAAGATGATG
TTGTCCAACACTACTGGGATGTTCTGTACAAGCTTTTGTCCAAAATGGCACAGTGGACACAAATGAGTT
CCTGTGTGATAAAGACAAAACCTCAACAGTGGCACCACCATACACCACTGTGCCATCTCCTACTACA
ACACCTACTCAAAGGAAAAACCAAGCTGGAACCTATTCAGTTAATAATGGCAATGATACTTGTCTGC
TGGCTACCATGGGGCTGCAGTGAACATCACTCAGGATAAGGTTGCTTCAGTTATTAACATCAACCCCAA
TACAACCTACTCCACAGGCAGCTGCCGTTCTCACACTGCTCTACTTAGACTCAATAGCAGCACCATTAAG
TATCTAGACTTTGCTTTGCTGTGAAAAATGAAAACCGATTTTATCTGAAGGAAGTGAACATCAGCATGT
ATTTGGTTAATGGCTCCGTTTTACGATTGCAAATAACAATCTCAGTACTGGGATGCCCCCTGGGAAAG
TTCTTATATGTGCAACAAGAGCAGACTGTTTCAGTGTCTGGAGCATTTAGATAAATACCTTTGATCTA
AGGGTTACGCTTTCAATGTGACACAAGGAAAGTATTCTACAGCCCAAGAGTGTTCGCTGGATGATGACA
CCATTCTAATCCAATTATAGTTGGTGTGGTCTTTTCAGGCTTGATTATCGTTATAGTGATTGCTTACGT
AATTGGCAGAAGAAAAAGTTATGCTGGATATCAGACTCTG

ACGCGTACGCGGCCGCTCGAGCAGAACTCATCTCAGAAGAGGATCTGGCAGCAAATGATATCCTGGATT
ACAAGGATGACGACGATAAGGTTTAA



Protein Sequence: >RC200456 protein sequence
Red=Cloning site Green=Tags(s)

MVCFRLFPVPGSGLVLVCLVLGAVRSYALELNLTDSENAATCLYAKWQMNFTVRYETTNNKYKTVTISDHG
 TVTYNGSICGDDQNGPKIAVQFGPGFSWIANFTKAASYIDSVSFSYNTGDNTTFPDAEDKGILTVDEL
 LAIRIPLNDLFRCNLSLLEKNDVVQHYWDVLVQAFVQNGTVSTNEFLCDKDKTSTVAPTIHTTVPSPPT
 TPTPKEKPEAGTYSVNNGNDTCLLATMGLQLNITQDKVASVININPNTTHTSTGSCRSHALLRLNSSTIK
 YLDFVFAVKNNRFYLKEVNISMVLYNGSVFSIANNLSYWDAPLGGSSYMCNKEQTVSVSGAFQINTFDL
 RVQPFNVTQGKYSTAQECSLDDDTILIPIIIVGAGLSGLIIVIVIAVYIGRRKSYAGYQTL

TRTRPLEQKLISEEDLAANDILDYKDDDDKV

Chromatograms: https://cdn.origene.com/chromatograms/mk6082_h08.zip

Restriction Sites: SgfI-MluI

Cloning Scheme:



ACCN: NM_013995

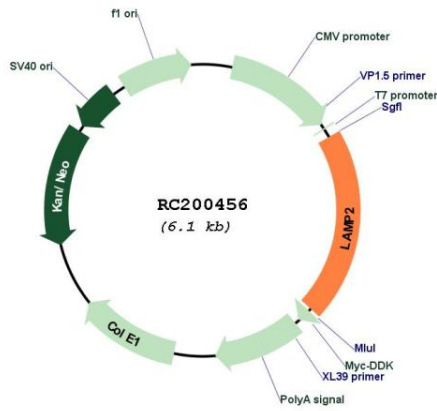
ORF Size: 1230 bp

OTI Disclaimer: Due to the inherent nature of this plasmid, standard methods to replicate additional amounts of DNA in E. coli are highly likely to result in mutations and/or rearrangements. Therefore, OriGene does not guarantee the capability to replicate this plasmid DNA. Additional amounts of DNA can be purchased from OriGene with batch-specific, full-sequence verification at a reduced cost. Please contact our customer care team at custsupport@origene.com or by calling 301.340.3188 option 3 for pricing and delivery.

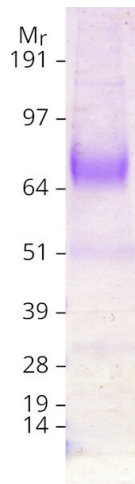
The molecular sequence of this clone aligns with the gene accession number as a point of reference only. However, individual transcript sequences of the same gene can differ through naturally occurring variations (e.g. polymorphisms), each with its own valid existence. This clone is substantially in agreement with the reference, but a complete review of all prevailing variants is recommended prior to use. [More info](#)

| | |
|-------------------------------|---|
| OTI Annotation: | This clone was engineered to express the complete ORF with an expression tag. Expression varies depending on the nature of the gene. |
| Components: | The ORF clone is ion-exchange column purified and shipped in a 2D barcoded Matrix tube containing 10ug of transfection-ready, dried plasmid DNA (reconstitute with 100 ul of water). |
| Reconstitution Method: | <ol style="list-style-type: none">1. Centrifuge at 5,000xg for 5min.2. Carefully open the tube and add 100ul of sterile water to dissolve the DNA.3. Close the tube and incubate for 10 minutes at room temperature.4. Briefly vortex the tube and then do a quick spin (less than 5000xg) to concentrate the liquid at the bottom.5. Store the suspended plasmid at -20°C. The DNA is stable for at least one year from date of shipping when stored at -20°C. |
| RefSeq: | NM_013995.2 |
| RefSeq Size: | 4076 bp |
| RefSeq ORF: | 1233 bp |
| Locus ID: | 3920 |
| UniProt ID: | P13473 |
| Cytogenetics: | Xq24 |
| Domains: | Lamp |
| Protein Families: | Druggable Genome, ES Cell Differentiation/IPS, Transmembrane |
| Protein Pathways: | Lysosome |
| MW: | 45 kDa |
| Gene Summary: | The protein encoded by this gene is a member of a family of membrane glycoproteins. This glycoprotein provides selectins with carbohydrate ligands. It may play a role in tumor cell metastasis. It may also function in the protection, maintenance, and adhesion of the lysosome. Alternative splicing of this gene results in multiple transcript variants encoding distinct proteins. [provided by RefSeq, Jul 2008] |

Product images:



Circular map for RC200456



Coomassie blue staining of purified LAMP2 protein (Cat# [TP300456]). The protein was produced from HEK293T cells transfected with LAMP2 cDNA clone (Cat# RC200456) using MegaTran 2.0 (Cat# [TT210002]).