

Product datasheet for **RC200453**

MMP10 (NM_002425) Human Tagged ORF Clone

Product data:

Product Type:	Expression Plasmids
Product Name:	MMP10 (NM_002425) Human Tagged ORF Clone
Tag:	Myc-DDK
Symbol:	MMP10
Synonyms:	SL-2; STMY2
Mammalian Cell Selection:	Neomycin
Vector:	pCMV6-Entry (PS100001)
E. coli Selection:	Kanamycin (25 ug/mL)



[View online »](#)

ORF Nucleotide Sequence:

>RC200453 ORF sequence
 Red=Cloning site Blue=ORF Green=Tags(s)

TTTTGTAATACGACTCACTATAGGGCGGCCGGAATTCGTCGACTGGATCCGGTACCGAGGAGATCTGCC
 GCC**CGCATCGCC**

ATGATGCATCTTGCATTCCTTGTGCTGTTGTGTCTGCCAGTCTGCTCTGCCTATCCTCTGAGTGGGGCAG
 CAAAAGAGGAGGACTCCAACAAGGATCTTGCCAGCAATACCTAGAAAAGTACTACAACCTCGAAAAGGA
 TGTGAAACAGTTTAGAAGAAAGGACAGTAACTCATTGTTAAAAAATCCAAGGAATGCAGAAGTTCCTT
 GGGTTGGAGGTGACAGGGAAAGCTAGACACTGACACTCTGGAGGTGATGCGCAAGCCAGGTGTGGAGTTC
 CTGACGTTGGTCACTTCAGCTCCTTTCTGGCATGCCAAGTGGAGGAAAACCCACCTTACATACAGGAT
 TGTGAATTATACACCAGATTTGCCAAGAGATGCTGTTGATTCTGCCATTGAGAAAGCTCTGAAAGTCTGG
 GAAGAGGTGACTCCACTCACATTCTCCAGGCTGTATGAAGGAGAGGCTGATATAATGATCTCTTTTGCAG
 TTAAGAACAATGGAGACTTTTACTCTTTTGTATGGCCAGGACACAGTTTGGCTCATGCCATCCACCTGG
 ACCTGGGCTTTATGGAGATATTCATTTGATGATGATGAAAAATGGACAGAAGATGCATCAGGCACCAAT
 TTATTCCTCGTTGCTGCTCATGAACTTGGCCACTCCCTGGGGCTCTTCACTCAGCCAACACTGAAGCTT
 TGATGTACCCACTCTACAACCTATTACAGAGCTCGCCAGTTCGCCTTTCGCAAGATGATGTGAATGG
 CATTCACTCTCTACGGACCTCCCCTGCCTCTACTGAGGAACCCCTGGTGGCCACAAAATCTGTTCTCT
 TCGGGATCTGAGATGCCAGCCAAGTGTGATCCTGCTTTGTCTTCGATGCCATCAGCACTCTGAGGGGAG
 AATATCTGTTCTTTAAAGACAGATATTTTGGCGAAGTCCCCTGGAACCCTGAACCTGAATTTTCATTT
 GATTTCTGCATTTTGGCCCTCTCTCCATCATATTTGGATGCTGCATATGAAGTTAACAGCAGGGACACC
 GTTTTTATTTTAAAGGAAATGAGTTCTGGCCATCAGAGGAAATGAGGTACAAGCAGGTTATCCAAGAG
 GCATCCATACCCCTGGGTTTTCTCCAACCATAAGGAAAATGATGCAGCTGTTTCTGACAAGGAAAAGAA
 GAAAACATACTTCTTTGCAGCGGACAAAATACTGGAGATTTGATGAAAATAGCCAGTCCATGGAGCAAGGC
 TTCCCTAGACTAATAGCTGATGACTTCCAGGAGTTGAGCCTAAGGTTGATGCTGTATTACAGGCATTTG
 GATTTTTCTACTTCTTCAGTGGATCATCACAGTTTGTGTTGACCCCAATGCCAGGATGGTGACACACAT
 ATTAAGAGTAACAGCTGGTTACATTGC

ACGCGTACGCGGCCGCTCGAGCAGAAACTCATCTCAGAAGAGGATCTGGCAGCAAATGATATCCTGGATT
 ACAAGGATGACGACGATAAGGTTTAA

Protein Sequence:

>RC200453 protein sequence
 Red=Cloning site Green=Tags(s)

MMHLAFLVLLCLPVC SAYPLSGAAKEEDSNKDLAQYLEKYNNLEKDVKQFRKDSNLI VKKIQGMQKFL
 GLEVTGKLDTDLEVMRKPRCGVPDVGHF SSFPGMPKWRKTHL TYRIVNYTPDLPRDAVDSAIEKALKVW
 EEVTP LTF SRL YEGEADIMI SF AVKEHGDFYSFDGPGHSLAHAYPPGPGLYGD IHFDDEKWTEDASGTN
 LFLVAAHELGHSLGLFHSANTEALMYPL YNSFTELAQFRLSQDDVNGIQSLY GPPPASTEELVPTKSVP
 SGSEMPAKCDPALSFDAI STL RGEYLF FKDRYFWRRSHWNPEPEFHL I SAFWPSLPSYLDAA YE VNSRDT
 VFIFKGNFWAIRGNEVQAGYPRGIHTLGFPTIRKIDA AVSDKEKKTYFFAADKYWRFDENSQSMEQG
 FPRLIADDFPGVEPKVDAVLQAFGFFYFFSGSSQFEFDPNARMVTHILKSNSWLHC

TRTRPLEQKLI SEEDLAANDILDYKDDDDKV

Chromatograms:

https://cdn.origene.com/chromatograms/mk6177_b11.zip

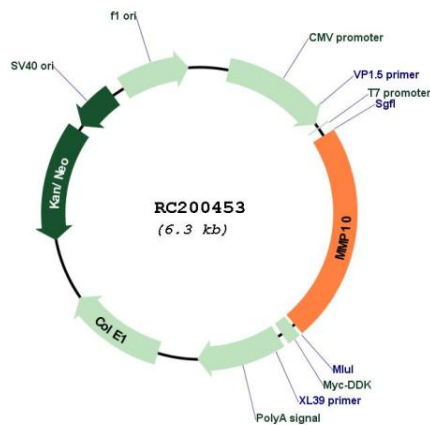
Restriction Sites:

Sgfl-Mlul

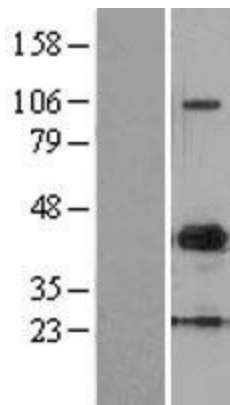
UniProt ID: [P09238](#)
Cytogenetics: 11q22.2
Protein Families: Druggable Genome, Protease
MW: 54.2 kDa

Gene Summary: This gene encodes a member of the peptidase M10 family of matrix metalloproteinases (MMPs). Proteins in this family are involved in the breakdown of extracellular matrix in normal physiological processes, such as embryonic development, reproduction, and tissue remodeling, as well as in disease processes, such as arthritis and metastasis. The encoded preproprotein is proteolytically processed to generate the mature protease. This secreted protease breaks down fibronectin, laminin, elastin, proteoglycan core protein, gelatins, and several types of collagen. The gene is part of a cluster of MMP genes on chromosome 11. [provided by RefSeq, Jan 2016]

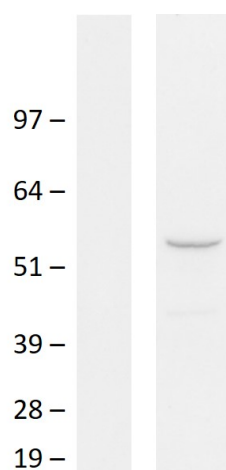
Product images:



Circular map for RC200453



Western blot validation of overexpression lysate (Cat# [LY400867]) using anti-DDK antibody (Cat# [TA50011-100]). Left: Cell lysates from untransfected HEK293T cells; Right: Cell lysates from HEK293T cells transfected with RC200453 using transfection reagent MegaTran 2.0 (Cat# [TT210002]).



Western blot validation of overexpression lysate (Cat# [LY400867]) using an anti-DDK antibody (Cat# [TA50011-100]). Left: Cell lysates from untransfected HEK293T cells; Right: Cell lysates from HEK293T cells transfected with RC200453 using transfection reagent PEI