

## Product datasheet for **RC200452**

### MPV17 (NM\_002437) Human Tagged ORF Clone

#### Product data:

**Product Type:** Expression Plasmids  
**Product Name:** MPV17 (NM\_002437) Human Tagged ORF Clone  
**Tag:** Myc-DDK  
**Symbol:** MPV17  
**Synonyms:** CMT2EE; MTDPS6; SYM1  
**Mammalian Cell Selection:** Neomycin  
**Vector:** pCMV6-Entry (PS100001)  
**E. coli Selection:** Kanamycin (25 ug/mL)  
**ORF Nucleotide Sequence:** >RC200452 ORF sequence  
Red=Cloning site Blue=ORF Green=Tags(s)

TTTTGTAATACGACTCACTATAGGGCGGCCGGAATTCGTCGACTGGATCCGGTACCGAGGAGATCTGCC  
GCC**CGATCGCC**

ATGGCACTCTGGCGGGCATACCAGCGGGCCCTGGCCGCTACCCGTGAAAGTACAGGTCCTGACAGCTG  
GGTCCCTGATGGGCTGGGTGACATTATCTCACAGCAGCTGGTGGAGAGGCGGGTCTGCAGGAACACCA  
GAGAGGCCGGACTCTGACCATGGTGTCCCTGGGCTGTGGCTTTGTGGCCCTGTGGTAGGAGGCTGGTAC  
AAGTTTTGGATCGTTTCATCCCTGGCACCACAAAGTGGATGCACTGAAGAAGATGTTGTTGGATCAGG  
GGGCTTTGCCCGTGTCTTAGGCTGCTTTCTCCCACTGGTAGGGCACTTAATGGACTGTCAGCCCA  
GGACAACCTGGGCCAACTACAGCGGATTATCCTGATGCCCTTACCAACTACTATCTATGGCCTGCT  
GTGCAGTTAGCCAACCTTACCTGGTCCCCCTTATTACAGGTTGGCCGTTGTCCAATGTTGCTGTTA  
TCTGGAACCTACCTGTCTGGAAGGCACATCGGCTC

**ACGCGT**ACGCGGCCGCTCGAGCAGAACTCATCTCAGAAGAGGATCTGGCAGCAAATGATATCCTGGATT  
ACAAGGATGACGACGATAAGGTTTAA

**Protein Sequence:** >RC200452 protein sequence  
Red=Cloning site Green=Tags(s)

MALWRAYQRALAAHPWKVQVLTAGSLMGLGDIISQQLVERRGLQEHQRGRTLTMVSLGCGFVGPVVGWY  
KVLDRFIPGTTKVDALKKMLLDQGGFAPCFLGCFLPLVGALNGLSAQDNWAKLQRDYPDALITNYLWPA  
VQLANFYLVPLHYRLAVVQCVAVIWNLSYLSWKAHRL

**TRTRPLEQKLI**SEEDLAANDILDYKDDDDKV

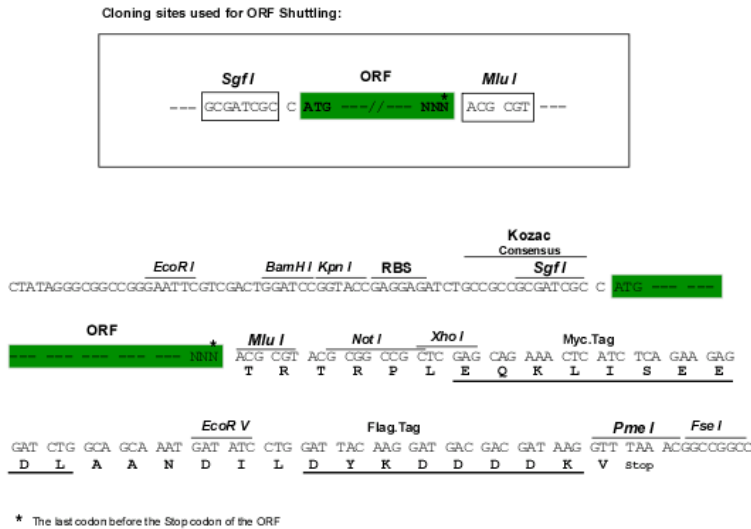
**Chromatograms:** [https://cdn.origene.com/chromatograms/mk6284\\_e06.zip](https://cdn.origene.com/chromatograms/mk6284_e06.zip)



[View online »](#)

Restriction Sites: SgfI-MluI

Cloning Scheme:



ACCN: NM\_002437

ORF Size: 528 bp

OTI Disclaimer: The molecular sequence of this clone aligns with the gene accession number as a point of reference only. However, individual transcript sequences of the same gene can differ through naturally occurring variations (e.g. polymorphisms), each with its own valid existence. This clone is substantially in agreement with the reference, but a complete review of all prevailing variants is recommended prior to use. [More info](#)

OTI Annotation: This clone was engineered to express the complete ORF with an expression tag. Expression varies depending on the nature of the gene.

Components: The ORF clone is ion-exchange column purified and shipped in a 2D barcoded Matrix tube containing 10ug of transfection-ready, dried plasmid DNA (reconstitute with 100 ul of water).

Reconstitution Method:

1. Centrifuge at 5,000xg for 5min.
2. Carefully open the tube and add 100ul of sterile water to dissolve the DNA.
3. Close the tube and incubate for 10 minutes at room temperature.
4. Briefly vortex the tube and then do a quick spin (less than 5000xg) to concentrate the liquid at the bottom.
5. Store the suspended plasmid at -20°C. The DNA is stable for at least one year from date of shipping when stored at -20°C.

RefSeq: [NM\\_002437.5](#)

RefSeq Size: 1051 bp

RefSeq ORF: 531 bp

Locus ID: 4358

UniProt ID: [P39210](#)

**Cytogenetics:** 2p23.3

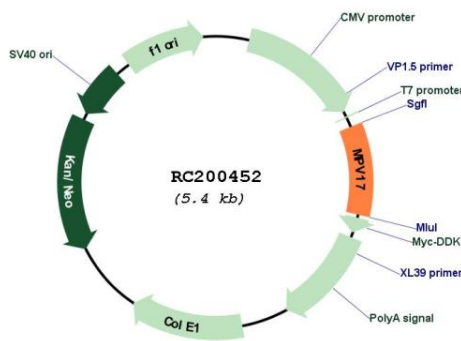
**Domains:** Mpv17\_PMP22

**Protein Families:** Transmembrane

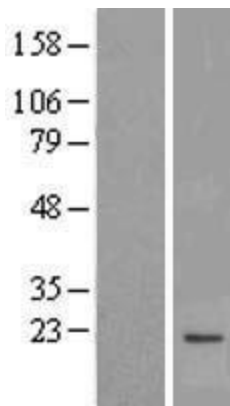
**MW:** 19.7 kDa

**Gene Summary:** This gene encodes a mitochondrial inner membrane protein that is implicated in the metabolism of reactive oxygen species. Mutations in this gene have been associated with the hepatocerebral form of mitochondrial DNA depletion syndrome (MDDS). [provided by RefSeq, Jul 2008]

**Product images:**



Circular map for RC200452



Western blot validation of overexpression lysate (Cat# [LY419326]) using anti-DDK antibody (Cat# [TA50011-100]). Left: Cell lysates from untransfected HEK293T cells; Right: Cell lysates from HEK293T cells transfected with RC200452 using transfection reagent MegaTran 2.0 (Cat# [TT210002]).