

Product datasheet for **RC200448**

Nectin (NDN) (NM_002487) Human Tagged ORF Clone

Product data:

Product Type:	Expression Plasmids
Product Name:	Nectin (NDN) (NM_002487) Human Tagged ORF Clone
Tag:	Myc-DDK
Symbol:	Nectin
Synonyms:	HsT16328; PWCR
Mammalian Cell Selection:	Neomycin
Vector:	pCMV6-Entry (PS100001)
E. coli Selection:	Kanamycin (25 ug/mL)
ORF Nucleotide Sequence:	>RC200448 ORF sequence Red=Cloning site Blue=ORF Green=Tags(s)

TTTTGTAATACGACTCACTATAGGGCGCCGGGAATTCGTCGACTGGATCCGGTACCGAGGAGATCTGCC
GCC**CGATCGCC**

ATGTCAGAAACAAAGTAAGGATCTGAGCGACCCTAACTTTGCAGCCGAGGCCCACTCCGAGGTGCACA
GCAGCCCTGGGGTTTCGGAGGGGTTCCCTCCGTCGCGACCCTGGCAGAGCCGCAGAGCCCTCCTTAGG
CCCGACGGCCGCTCCGCAGGCCGCGCCCTCCCAGGCCCGAACGACGAGGGCGACCCGAAGGCCCTG
CAGCAGGCTGCGGAGGAGGGCCGCCCCACCAGGCCCGAGCGGGCCAGCCGGGCCCGCACCCGAC
CCCCGGCGCAGCTGGTGCAGAAGGCGCAGAGCTCATGTGGTACGTGCTGGTCAAGGACCAGAAGAAGAT
GATCATCTGGTTCCAGACATGGTGAAAGATGTACATCGGCAGCTACAAGAAGTGGTGCAGGAGCATCCTC
CGGCGCACCGCCTCATCCTCGCCCGGGTGTTCGGGCTGCACCTGAGGCTAACCGCCTGCACACCATGG
AGTTTGCCTGGTCAAAGCGCTGGAGCCGAGGAGCTGGACAGGGTGGCGCTGAGCAACCGCATGCCAT
GACAGGCCCTCCTGCTCATGATCCTGAGCCTCATCTACGTGAAGGGCCGCGGCCAGAGAGAGCGCCGTC
TGAACGTGCTGCGCATCCTGGGCTGCGGCCCTGGAAGAAGCACTCCACCTTCGGGGACGTGCGGAAGC
TCATCACTGAGGAGTTCGTCAAATGAATTACCTGAAGTACCAGCGCTCCCATACGTGGAGCCGCCGA
ATACGAGTCTTTTGGGGCTCCCGGCCAGCCGAAATCACCAAGATGCAAATCATGGAGTTCCTGGCC
AGGGTCTTTAAGAAAGACCCCGAGCCTGGCCCTCCCGATACAGAGAAGCTCTGGAGGAGCCAGAGCTC
TGCGGGAGGCTAATCCCACTGCCACTACCTCGCAGCAGTGTCTCTGAGGAC

ACGCGTACGCGGCCGCTCGAGCAGAAACTCATCTCAGAAGAGGATCTGGCAGCAAATGATATCCTGGATT
ACAAGGATGACGACGATAAGGTTTAA



[View online »](#)

Protein Sequence: >RC200448 protein sequence
Red=Cloning site Green=Tags(s)

MSEQSKDLSDPNF AAEAPNSEVHSSPGVSEGVPPSATLAEPQSPPLGPTAAPQAAPPPQAPNDEGDPKAL
 QQAAEEGRAHQAPSAAQPGAPPAPAQLVQKAHELMWYVLVKDQKKMIWFPPDMVKDVIKSYKKWCRSIL
 RRTSLILARVFLHLRLTSLHTMEFALVKALEPEELDRVALSNRMPMTGLLLMILSLIYVKGRGARESAV
 WNVLRILGLRPWKKHSTFGDVRKLITEEFVQMNLYKYQRPVYVEPPEYEFWGSRASREITKMQIMEFLA
 RVFKKDPQAWPSRYREALLEEARALREANPTAHYPRSSVSED

TRTRPLEQKLISEEDLAANDILDYKDDDDKV

Chromatograms: https://cdn.origene.com/chromatograms/mk6193_a07.zip

Restriction Sites: SgfI-MluI

Cloning Scheme:



ACCN: NM_002487

ORF Size: 963 bp

OTI Disclaimer: The molecular sequence of this clone aligns with the gene accession number as a point of reference only. However, individual transcript sequences of the same gene can differ through naturally occurring variations (e.g. polymorphisms), each with its own valid existence. This clone is substantially in agreement with the reference, but a complete review of all prevailing variants is recommended prior to use. [More info](#)

OTI Annotation: This clone was engineered to express the complete ORF with an expression tag. Expression varies depending on the nature of the gene.

Components: The ORF clone is ion-exchange column purified and shipped in a 2D barcoded Matrix tube containing 10ug of transfection-ready, dried plasmid DNA (reconstitute with 100 ul of water).

Reconstitution Method:

1. Centrifuge at 5,000xg for 5min.
2. Carefully open the tube and add 100ul of sterile water to dissolve the DNA.
3. Close the tube and incubate for 10 minutes at room temperature.
4. Briefly vortex the tube and then do a quick spin (less than 5000xg) to concentrate the liquid at the bottom.
5. Store the suspended plasmid at -20°C. The DNA is stable for at least one year from date of shipping when stored at -20°C.

RefSeq: [NM_002487.3](#)

RefSeq Size: 1897 bp

RefSeq ORF: 966 bp

Locus ID: 4692

UniProt ID: [Q99608](#)

Cytogenetics: 15q11.2

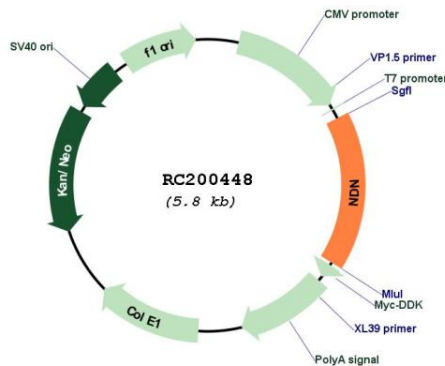
Domains: MAGE

Protein Families: Druggable Genome, Transcription Factors

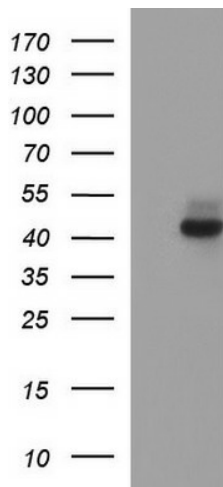
MW: 36.1 kDa

Gene Summary: This intronless gene is located in the Prader-Willi syndrome deletion region. It is an imprinted gene and is expressed exclusively from the paternal allele. Studies in mouse suggest that the protein encoded by this gene may suppress growth in postmitotic neurons. [provided by RefSeq, Jul 2008]

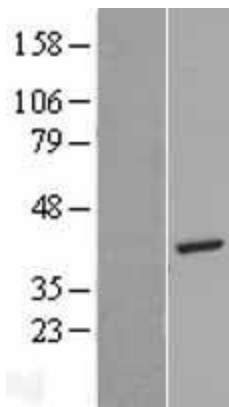
Product images:



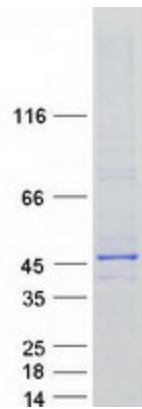
Circular map for RC200448



HEK293T cells were transfected with the pCMV6-ENTRY control (Cat# [PS100001], Left lane) or pCMV6-ENTRY NDN (Cat# RC200448, Right lane) cDNA for 48 hrs and lysed. Equivalent amounts of cell lysates (5 ug per lane) were separated by SDS-PAGE and immunoblotted with anti-NDN(Cat# [TA506975]). Positive lysates [LY400887] (100ug) and [LC400887] (20ug) can be purchased separately from OriGene.



Western blot validation of overexpression lysate (Cat# [LY400887]) using anti-DDK antibody (Cat# [TA50011-100]). Left: Cell lysates from untransfected HEK293T cells; Right: Cell lysates from HEK293T cells transfected with RC200448 using transfection reagent MegaTran 2.0 (Cat# [TT210002]).



Coomassie blue staining of purified NDN protein (Cat# [TP300448]). The protein was produced from HEK293T cells transfected with NDN cDNA clone (Cat# RC200448) using MegaTran 2.0 (Cat# [TT210002]).