

Product datasheet for **RC200433**

Rab2 (RAB2A) (NM_002865) Human Tagged ORF Clone

Product data:

Product Type:	Expression Plasmids
Product Name:	Rab2 (RAB2A) (NM_002865) Human Tagged ORF Clone
Tag:	Myc-DDK
Symbol:	Rab2
Synonyms:	LHX; RAB2
Mammalian Cell Selection:	Neomycin
Vector:	pCMV6-Entry (PS100001)
E. coli Selection:	Kanamycin (25 ug/mL)
ORF Nucleotide Sequence:	>RC200433 ORF sequence Red=Cloning site Blue=ORF Green=Tags(s)

TTTTGTAATACGACTCACTATAGGGCGCCGGGAATTCGTCGACTGGATCCGGTACCGAGGAGATCTGCC
GCC**CGATCGCC**

ATGGCGTACGCCTATCTCTTCAAGTACATCATAATCGGCGACACAGGTGTTGGTAAATCATGCTTATTGC
TACAGTTTACAGACAAGAGGTTTCAGCCAGTGCATGACCTTACTATTGGTGTAGAGTTCGGTGCTCGAAT
GATAACTATTGATGGGAAACAGATAAACTTCAGATATGGGATACGGCAGGGCAAGAATCCTTTCGTTCC
ATCACAAGGTCGTATTACAGAGGTGCAGCAGGAGCTTTACTAGTTTACGATATTACACGGAGAGATACAT
TCAACCACTTGACAACCTGGTTAGAAGATGCCCGCCAGCATTCCAATTCCAACATGGTCATTATGCTTAT
TGGAAATAAAAGTGATTTAGAATCTAGAAGAGAAGTAAAAAAGAAGAAGGTGAAGCTTTTGCACGAGAA
CATGGACTCATCTTCATGGAAACGTCTGCTAAGACTGCTTCCAATGTAGAAGAGGCATTTATTAATACAG
CAAAAGAAATTTATGAAAAAATCAAGAAGGAGTCTTTGACATTAATAATGAGGCAAAATGGCATTAAAT
TGGCCCTCAGCATGCTGCTACCAATGCAACACATGCAGGCAATCAGGGAGGACAGCAGGCTGGGGCGGC
TGCTGT

ACGCGTACGCGGCCGCTCGAGCAGAACTCATCTCAGAAGAGGATCTGGCAGCAATGATATCCTGGATT
ACAAGGATGACGACGATAAGGTTTAA



[View online »](#)

Protein Sequence: >RC200433 protein sequence
 Red=Cloning site Green=Tags(s)

MAYAYLFKYIIIGDVGKSCLLLQFTDKRFQPVHDLTIGVEFGARMITIDGKQIKLQIWDTAGQESFRS
 ITRSYRGAAGALLVYDITRRDTFNHLTTWLEDARQHSNSNMVIMLIGNKSDLESRRVEVKKEGEAFARE
 HGLIFMETSAKTASNVEEAFINTAKEIYEKIQEGVFDINNEANGIKIGPQHAATNATHAGNQGGQQAGGG
 CC

TRTRPLEQKLISEEDLAANDILDYKDDDDKV

Chromatograms: https://cdn.origene.com/chromatograms/mk6381_c08.zip

Restriction Sites: SgfI-MluI

Cloning Scheme:

Cloning sites used for ORF Shuttling:



* The last codon before the Stop codon of the ORF

ACCN: NM_002865

ORF Size: 636 bp

OTI Disclaimer: The molecular sequence of this clone aligns with the gene accession number as a point of reference only. However, individual transcript sequences of the same gene can differ through naturally occurring variations (e.g. polymorphisms), each with its own valid existence. This clone is substantially in agreement with the reference, but a complete review of all prevailing variants is recommended prior to use. [More info](#)

OTI Annotation: This clone was engineered to express the complete ORF with an expression tag. Expression varies depending on the nature of the gene.

Components: The ORF clone is ion-exchange column purified and shipped in a 2D barcoded Matrix tube containing 10ug of transfection-ready, dried plasmid DNA (reconstitute with 100 ul of water).

Reconstitution Method:

1. Centrifuge at 5,000xg for 5min.
2. Carefully open the tube and add 100ul of sterile water to dissolve the DNA.
3. Close the tube and incubate for 10 minutes at room temperature.
4. Briefly vortex the tube and then do a quick spin (less than 5000xg) to concentrate the liquid at the bottom.
5. Store the suspended plasmid at -20°C. The DNA is stable for at least one year from date of shipping when stored at -20°C.

Note: Plasmids are not sterile. For experiments where strict sterility is required, filtration with 0.22um filter is required.

RefSeq: [NM_002865.3](#)

RefSeq Size: 3812 bp

RefSeq ORF: 639 bp

Locus ID: 5862

UniProt ID: [P61019](#)

Cytogenetics: 8q12.1-q12.2

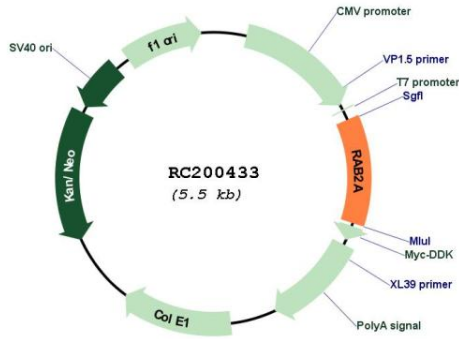
Domains: ras

Protein Families: Druggable Genome

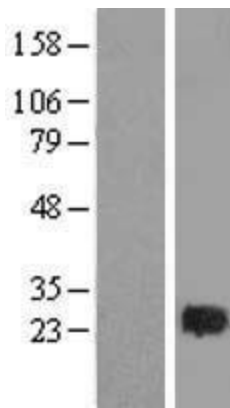
MW: 23.5 kDa

Gene Summary: The protein encoded by this gene belongs to the Rab family, members of which are small molecular weight guanosine triphosphatases (GTPases) that contain highly conserved domains involved in GTP binding and hydrolysis. The Rabs are membrane-bound proteins, involved in vesicular fusion and trafficking. This protein is a resident of pre-Golgi intermediates, and is required for protein transport from the endoplasmic reticulum (ER) to the Golgi complex. Alternatively spliced transcript variants encoding different isoforms have been found for this gene. [provided by RefSeq, Oct 2011]

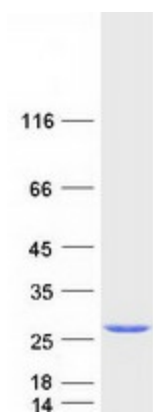
Product images:



Circular map for RC200433



Western blot validation of overexpression lysate (Cat# [LY419058]) using anti-DDK antibody (Cat# [TA50011-100]). Left: Cell lysates from untransfected HEK293T cells; Right: Cell lysates from HEK293T cells transfected with RC200433 using transfection reagent MegaTran 2.0 (Cat# [TT210002]).



Coomassie blue staining of purified RAB2A protein (Cat# [TP300433]). The protein was produced from HEK293T cells transfected with RAB2A cDNA clone (Cat# RC200433) using MegaTran 2.0 (Cat# [TT210002]).