

Product datasheet for RC200432

RAB6A (NM_002869) Human Tagged ORF Clone

Product data:

Product Type: Expression Plasmids
Product Name: RAB6A (NM_002869) Human Tagged ORF Clone
Tag: Myc-DDK
Symbol: RAB6A
Synonyms: RAB6
Mammalian Cell Selection: Neomycin
Vector: pCMV6-Entry (PS100001)
E. coli Selection: Kanamycin (25 ug/mL)
ORF Nucleotide Sequence: >RC200432 ORF sequence
 Red=Cloning site Blue=ORF Green=Tags(s)

TTTTGTAATACGACTCACTATAGGGCGGCCGGAATTCGTCGACTGGATCCGGTACCGAGGAGATCTGCC
 GCC**CGATCGCC**

ATGTCCACGGGCGGAGACTTCGGGAATCCGCTGAGGAAATCAAGCTGGTGTTCCTGGGGGAGCAAAGCG
 TTGAAAGACATCTTTGATCACCAGATTCATGTATGACAGTTTTGACAACACCTATCAGGCAACAATTGG
 CATTGACTTTTTATCAAAAATGTACTTGGAGGATCGAACAATCAGGCTTCAGCTGTGGGATACTGCC
 GGTCAGGAACGTTCCGTAGCCTCATTCCAGTTACATCCGTGATTCTGCTGCAGCTGTAGTAGTTTACG
 ATATCACAAATGTTAACTCATTCCAGCAAACACAAAGTGGATTGATGATGTCAGAACAGAAAGAGGAAG
 TGATGTTATCATCATGCTAGTAGGAAATAAACAGATCTTGCTGACAAGAGGCAAGTGCAATTGAGGAG
 GGAGAGAGGAAAGCCAAAGAGCTGAATGTTATGTTTATTGAAACTAGTGCAAAAGCTGGATACAATGTAA
 AGCAGCTCTTTCGACGTGTAGCAGCAGCTTTGCCGGGAATGAAAAGCACACAGGACAGAAGCAGAGAAGA
 TATGATTGACATAAAAAGCTGAAAAGCCTCAGGAGCAACCAAGTCAAGGAGGCTGTTCTCTGC

ACGCGTACGCGGCCGCTCGAGCAGAACTCATCTCAGAAGAGGATCTGGCAGCAAATGATATCCTGGATT
 ACAAGGATGACGACGATAAGGTTTAA

Protein Sequence: >RC200432 protein sequence
 Red=Cloning site Green=Tags(s)

MSTGGDFGNPLRKFVFLGQSVGKTSLITRFMYDSFDNTYQATIGIDFLSKTMYLEDRTIRLQLWDTA
 GQERFRSLIPSYIRDSAAAVVVDITNVNSFQTTKWIDDVTERGSDVIIMLVGNKTDLADKRQVSIIE
 GERKAKELNVMFIETSAKAGYNVKQLFRRVAAALPGMESTQDRSREDMIDIKLEKPEQPVSEGGCSC

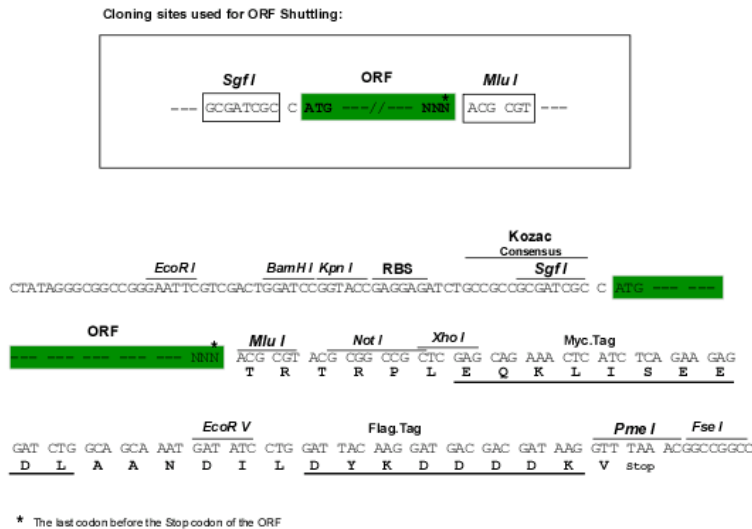
TRTRPLEQKLISEEDLAANDILDYKDDDDKV



Chromatograms: https://cdn.origene.com/chromatograms/mk6396_b01.zip

Restriction Sites: SgfI-MluI

Cloning Scheme:



ACCN: NM_002869

ORF Size: 624 bp

OTI Disclaimer: The molecular sequence of this clone aligns with the gene accession number as a point of reference only. However, individual transcript sequences of the same gene can differ through naturally occurring variations (e.g. polymorphisms), each with its own valid existence. This clone is substantially in agreement with the reference, but a complete review of all prevailing variants is recommended prior to use. [More info](#)

OTI Annotation: This clone was engineered to express the complete ORF with an expression tag. Expression varies depending on the nature of the gene.

Components: The ORF clone is ion-exchange column purified and shipped in a 2D barcoded Matrix tube containing 10ug of transfection-ready, dried plasmid DNA (reconstitute with 100 ul of water).

- Reconstitution Method:**
1. Centrifuge at 5,000xg for 5min.
 2. Carefully open the tube and add 100ul of sterile water to dissolve the DNA.
 3. Close the tube and incubate for 10 minutes at room temperature.
 4. Briefly vortex the tube and then do a quick spin (less than 5000xg) to concentrate the liquid at the bottom.
 5. Store the suspended plasmid at -20°C. The DNA is stable for at least one year from date of shipping when stored at -20°C.

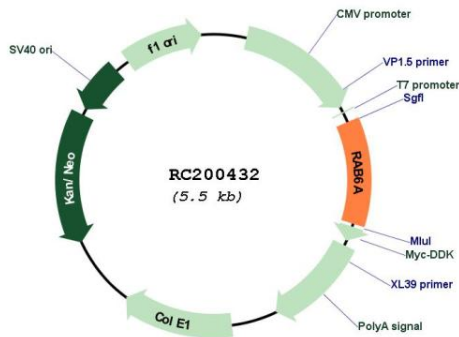
Note: Plasmids are not sterile. For experiments where strict sterility is required, filtration with 0.22um filter is required.

RefSeq: [NM_002869.5](#)

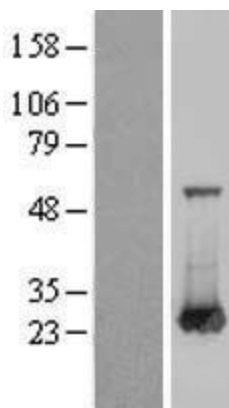
RefSeq Size: 3419 bp

RefSeq ORF:	627 bp
Locus ID:	5870
UniProt ID:	P20340
Cytogenetics:	11q13.4
Domains:	ras, RAN, RAS, RHO, RAB
Protein Families:	Druggable Genome
MW:	23.5 kDa
Gene Summary:	This gene encodes a member of the RAB family, which belongs to the small GTPase superfamily. GTPases of the RAB family bind to various effectors to regulate the targeting and fusion of transport carriers to acceptor compartments. This protein is located at the Golgi apparatus, which regulates trafficking in both a retrograde (from early endosomes and Golgi to the endoplasmic reticulum) and an anterograde (from the Golgi to the plasma membrane) directions. Myosin II is an effector of this protein in these processes. This protein is also involved in assembly of human cytomegalovirus (HCMV) by interacting with the cellular protein Bicaudal D1, which interacts with the HCMV virion tegument protein, pp150. Multiple alternatively spliced transcript variants encoding different isoforms have been identified. [provided by RefSeq, Aug 2011]

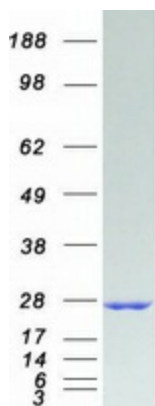
Product images:



Circular map for RC200432



Western blot validation of overexpression lysate (Cat# [LY419062]) using anti-DDK antibody (Cat# [TA50011-100]). Left: Cell lysates from untransfected HEK293T cells; Right: Cell lysates from HEK293T cells transfected with RC200432 using transfection reagent MegaTran 2.0 (Cat# [TT210002]).



Coomassie blue staining of purified RAB6A protein (Cat# [TP300432]). The protein was produced from HEK293T cells transfected with RAB6A cDNA clone (Cat# RC200432) using MegaTran 2.0 (Cat# [TT210002]).