

## Product datasheet for **RC200430**

### Retinoic Acid Receptor alpha (RARA) (NM\_000964) Human Tagged ORF Clone

#### Product data:

Product Type:	Expression Plasmids
Product Name:	Retinoic Acid Receptor alpha (RARA) (NM_000964) Human Tagged ORF Clone
Tag:	Myc-DDK
Symbol:	Retinoic Acid Receptor alpha
Synonyms:	NR1B1; RAR
Mammalian Cell Selection:	Neomycin
Vector:	pCMV6-Entry (PS100001)
E. coli Selection:	Kanamycin (25 ug/mL)



[View online »](#)

**ORF Nucleotide Sequence:**

>RC200430 representing NM\_000964  
 Red=Cloning site Blue=ORF Green=Tags(s)

TTTTGTAATACGACTCACTATAGGGCGGCCGGAATTCGTCGACTGGATCCGGTACCGAGGAGATCTGCC  
 GCC**CGCATCGCC**

ATGGCCAGCAACAGCAGCTCCTGCCGACACCTGGGGCGGGCACCTCAATGGGTACCCGGTGCCTCCCT  
 ACGCCTTCTTCTCCCCCTATGCTGGGTGGACTCTCCCGCCAGGCGCTCTGACCACTCTCCAGCACCA  
 GCTTCCAGTTAGTGGATATAGCACACCATCCCCAGCCACCATTGAGACCCAGAGCAGCAGTTCTGAAGAG  
 ATAGTGCCAGCCCTCCCTCGCCACCCCTCTACCCCGCATCTACAAGCCTTGCTTTGTCTGTGAGGACA  
 AGTCTCAGGCTACCACTATGGGGTACGCGCTGTGAGGGCTGCAAGGGCTTCTTCCGCCGAGCATCCA  
 GAAGAACATGGTGTACACGTGTACCCGGACAAGAAGTGCATCATCAACAAGGTGACCCGGAACCGCTGC  
 CAGTACTGCCGACTGCAGAAGTCTTTGAAGTGGGCATGTCCAAGGAGTCTGTGAGAAACGACCGAAACA  
 AGAAGAAGAAGGAGGTGCCAAGCCGAGTCTCTGAGAGCTACACGCTGACGCCGAGGTGGGGGAGCT  
 CATTGAGAAGGTGCGCAAAGCGCACAGGAAACCTTCCCTGCCCTCTGCCAGCTGGGCAAATACACTACG  
 AACACAGCTCAGAACACGTGTCTCTCTGGACATTGACCTCTGGGACAAGTTTCACTGAAGTCTCCACCA  
 AGTGCATCATTAAAGACTGTGGAGTTCGCAAGCAGCTGCCCGGCTTACCACCCCTCACCATCGCCGACCA  
 GATCACCTCCTCAAGGCTGCCTGCCTGGACATCCTGATCCTGCGGATCTGCACGCGGTACACGCCCGAG  
 CAGGACACCATGACCTTCTCGGACGGGTGACCCTGAACCGGACCCAGATGCACAACGCTGGCTTCCGCC  
 CCCTCACCGACCTGGTCTTTGCCCTTCCCAACAGCTGCTGCCCTGGAGATGGATGATGCGGAGACGGG  
 GCTGCTCAGCGCCATCTGCCTCATCTGCGGAGACCGCCAGGACCTGGAGCAGCCGACCGGGTGGACATG  
 CTCGAGGACCCGCTGCTGGAGCGCTAAAGTCTACGTGCGGAAGCGGAGGCCAGCCGCCCATGATG  
 TCCCAAGATGCTAATGAAGATTACTGACCTGCGAAGCATCAGCGCAAGGGGGCTGAGCGGGTGCATC  
 GCTGAAGATGGAGATCCCGGGTCCATGCCGCTCTCATCCAGGAAATGTTGGAGAAGTCAAGAGGCGCTG  
 GACACTCTGAGCGGACAGCCGGGGGTGGGGGGGACGGGGTGGCCTGGCCCCCGCCAGGACGCT  
 GTAGCCCCAGCTCAGCCCCAGCTCCAACAGAAGCAGCCCGGCCACCACTCCCCG

**ACGCGT**ACGCGGCCGCTCGAGCAGAACTCATCTCAGAAGAGGATCTGGCAGCAAATGATATCCTGGATT  
 ACAAGGATGACGACGATAAGGTTTAA

**Protein Sequence:**

>RC200430 representing NM\_000964  
 Red=Cloning site Green=Tags(s)

MASNSSSCTPGGGHLNGYPVPPYAFFFPMLGGLSPPGALTTLQHQLPVSGYSTPSPATIETQSSSSEE  
 IVPSPSPPLPRIYKPCFVCQDKSSGYHYGVSACEGCKGFFRRSIQKNMYYTCHRDKNCIINKVTRNRC  
 QYCRLLQKCFEVMGSKESVRNDRNKKKKEVPKPECSESYLTPEVGELIEKVRKAHQETFPALCQLGKYTT  
 NNSSEQRVSLDIDLWDFSELSTKCIIKTVEFAKQLPGFTTLTIADQITLLKAACLDILILRICTRYTPE  
 QDTMTFSDGLTLNRTQMHNAGFGPLTDLVFAFANQLLPLEMDDAETGLLSAICLICGDRQDLEQPDRVDM  
 LQEPLLEALKVYVRRRSPRPHMFKMLMKITDLRSISAKGAERVITLKMEIPGSMPLIQEMLENSEGL  
 DTLSGQPGGGRDGGGLAPPPGSCSPSLSPSSNRSSPATHSP

**TR**TRPLEQKLISEEDLAANDILDYKDDDDKV

**Chromatograms:**

[https://cdn.origene.com/chromatograms/mg2603\\_h05.zip](https://cdn.origene.com/chromatograms/mg2603_h05.zip)

**Restriction Sites:**

Sgfl-Mlul



**Note:** Plasmids are not sterile. For experiments where strict sterility is required, filtration with 0.22um filter is required.

**RefSeq:** [NM\\_000964.4](#)

**RefSeq Size:** 3260 bp

**RefSeq ORF:** 1389 bp

**Locus ID:** 5914

**UniProt ID:** [P10276](#)

**Cytogenetics:** 17q21.2

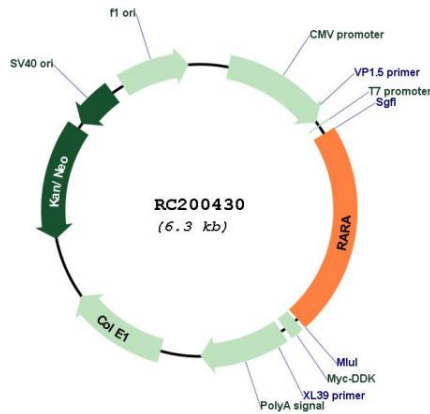
**Protein Families:** Druggable Genome, Nuclear Hormone Receptor, Transcription Factors

**Protein Pathways:** Acute myeloid leukemia, Pathways in cancer

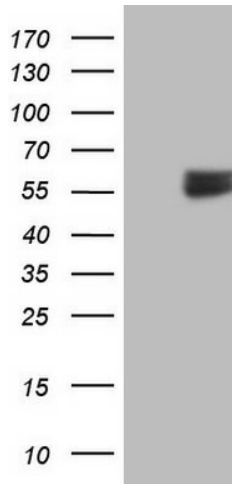
**MW:** 50.6 kDa

**Gene Summary:** This gene represents a nuclear retinoic acid receptor. The encoded protein, retinoic acid receptor alpha, regulates transcription in a ligand-dependent manner. This gene has been implicated in regulation of development, differentiation, apoptosis, granulopoiesis, and transcription of clock genes. Translocations between this locus and several other loci have been associated with acute promyelocytic leukemia. Alternatively spliced transcript variants have been found for this locus.[provided by RefSeq, Sep 2010]

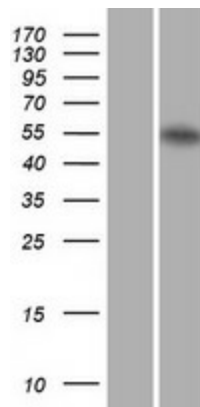
**Product images:**



Circular map for RC200430



HEK293T cells were transfected with the pCMV6-ENTRY control (Cat# [PS100001], Left lane) or pCMV6-ENTRY RARA (Cat# RC200430, Right lane) cDNA for 48 hrs and lysed. Equivalent amounts of cell lysates (5 ug per lane) were separated by SDS-PAGE and immunoblotted with anti-RARA (Cat# [TA806484]). Positive lysates [LY400350] (100ug) and [LC400350] (20ug) can be purchased separately from OriGene.



Western blot validation of overexpression lysate (Cat# [LY428804]) using anti-DDK antibody (Cat# [TA50011-100]). Left: Cell lysates from untransfected HEK293T cells; Right: Cell lysates from HEK293T cells transfected with [RC227974] using transfection reagent MegaTran 2.0 (Cat# [TT210002]).