

## Product datasheet for **RC200418L3V**

### Glucose Transporter 5 GLUT5 (SLC2A5) (NM\_003039) Human Tagged ORF Clone Lentiviral Particle

#### Product data:

Product Type:	Lentiviral Particles
Product Name:	Glucose Transporter 5 GLUT5 (SLC2A5) (NM_003039) Human Tagged ORF Clone Lentiviral Particle
Symbol:	SLC2A5
Synonyms:	GLUT-5; GLUT5
Mammalian Cell Selection:	Puromycin
Vector:	pLenti-C-Myc-DDK-P2A-Puro (PS100092)
Tag:	Myc-DDK
ACCN:	NM_003039
ORF Size:	1503 bp
ORF Nucleotide Sequence:	The ORF insert of this clone is exactly the same as(RC200418).
OTI Disclaimer:	The molecular sequence of this clone aligns with the gene accession number as a point of reference only. However, individual transcript sequences of the same gene can differ through naturally occurring variations (e.g. polymorphisms), each with its own valid existence. This clone is substantially in agreement with the reference, but a complete review of all prevailing variants is recommended prior to use. <a href="#">More info</a>
OTI Annotation:	This clone was engineered to express the complete ORF with an expression tag. Expression varies depending on the nature of the gene.
RefSeq:	<a href="#">NM_003039.1</a>
RefSeq Size:	2454 bp
RefSeq ORF:	1506 bp
Locus ID:	6518
UniProt ID:	<a href="#">P22732</a>
Cytogenetics:	1p36.23
Domains:	sugar_tr



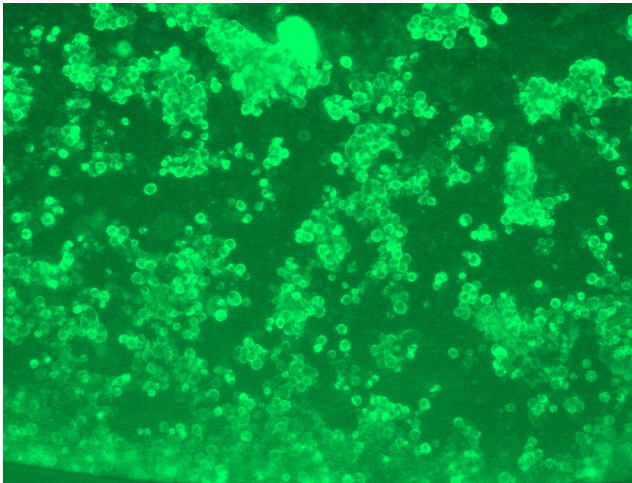
[View online »](#)

**Protein Families:** Transmembrane

**MW:** 55 kDa

**Gene Summary:** The protein encoded by this gene is a fructose transporter responsible for fructose uptake by the small intestine. The encoded protein also is necessary for the increase in blood pressure due to high dietary fructose consumption. [provided by RefSeq, Jun 2016]

### Product images:



[RC200418L3] was used to prepare Lentiviral particles using [TR30037] packaging kit. HEK293T cells were transduced with RC200418L3V particle to overexpress human SLC2A5-Myc-DDK fusion protein.