

## Product datasheet for RC200416

### SNRPF (NM\_003095) Human Tagged ORF Clone

#### Product data:

**Product Type:** Expression Plasmids  
**Product Name:** SNRPF (NM\_003095) Human Tagged ORF Clone  
**Tag:** Myc-DDK  
**Symbol:** SNRPF  
**Synonyms:** Sm-F; SMF; snRNP-F  
**Vector:** pCMV6-Entry (PS100001)  
**E. coli Selection:** Kanamycin (25 ug/mL)  
**Cell Selection:** Neomycin  
**ORF Nucleotide Sequence:** >RC200416 ORF sequence  
Red=Cloning site Blue=ORF Green=Tags(s)

TTTTGTAATACGACTCACTATAGGGCGCCGGAATTCGTCGACTGGATCCGGTACCGAGGAGATCTGCC  
GCCGCGATCGCC

ATGAGTTTACCCCTCAATCCCAAACCTTCTCAATGGACTAACAGGAAAGCCAGTGATGGTGAACCTTA  
AGTGGGAATGGAGTACAAGGGCTATCTGGTATCTGTAGATGGCTACATGAACATGCAGCTTGCAAATAC  
AGAAGAATACATAGATGGAGCTTTGTCTGGACATCTGGGTGAAGTTTAAATAAGGTGTAATAATGCCTT  
TATATCAGAGGTGTGAAGAAGAGGAAGAAGATGGGAAATGAGAGAA

ACGCGTACGCGGCCGCTCGAGCAGAAACTCATCTCAGAAGAGGATCTGGCAGCAAATGATATCCTGGATT  
ACAAGGATGACGACGATAAGGTTTAA

**Protein Sequence:** >RC200416 protein sequence  
Red=Cloning site Green=Tags(s)

MSLPLNPKPFLNGLTGKPMVKLKWGMEYKGYLVSVDGYMNMQLANTEEYIDGALSGHLGEVLIRCNNVL  
YIRGVEEEEEDGEMRE

TRTRPLEQKLISEEDLAANDILDYKDDDDKV

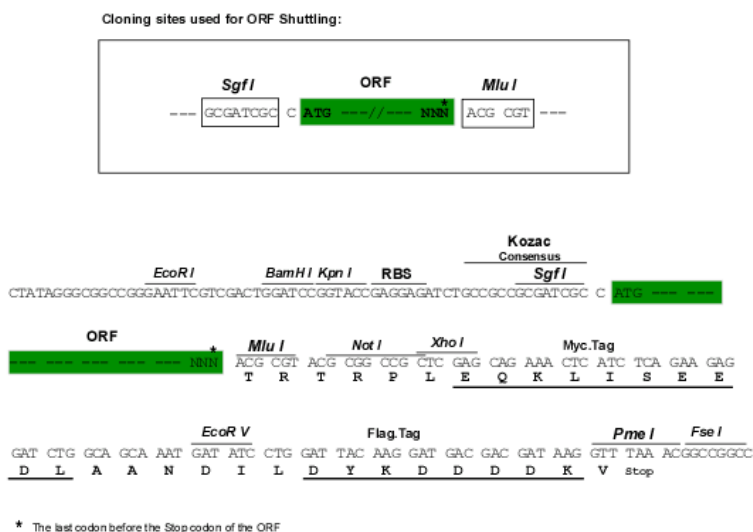
**Chromatograms:** [https://cdn.origene.com/chromatograms/mk6385\\_g12.zip](https://cdn.origene.com/chromatograms/mk6385_g12.zip)

**Restriction Sites:** SgfI-MluI

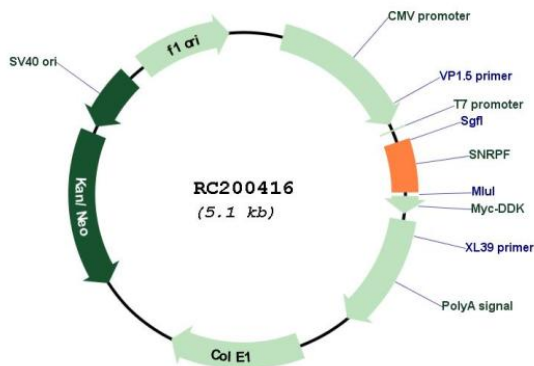


[View online »](#)

Cloning Scheme:



Plasmid Map:



ACCN:

NM\_003095

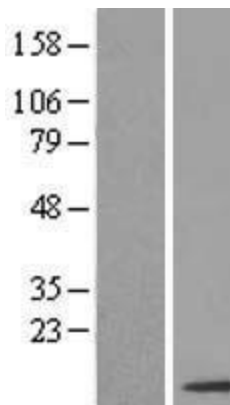
ORF Size:

258 bp

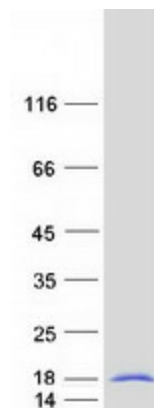
OTI Disclaimer:

The molecular sequence of this clone aligns with the gene accession number as a point of reference only. However, individual transcript sequences of the same gene can differ through naturally occurring variations (e.g. polymorphisms), each with its own valid existence. This clone is substantially in agreement with the reference, but a complete review of all prevailing variants is recommended prior to use. [More info](#)

|                   |  |
|-------------------|--|
| OTI Annotation:   | This clone was engineered to express the complete ORF with an expression tag. Expression varies depending on the nature of the gene. |
| RefSeq:           | <a href="#">NM_003095.3</a>  |
| RefSeq Size:      | 806 bp   |
| RefSeq ORF:       | 261 bp   |
| Locus ID:         | 6636   |
| Domains:          | Sm   |
| Protein Families: | Stem cell - Pluripotency   |
| Protein Pathways: | Spliceosome  |
| MW:               | 9.7 kDa  |

**Product images:**

Western blot validation of overexpression lysate (Cat# [LY418906]) using anti-DDK antibody (Cat# [TA50011-100]). Left: Cell lysates from untransfected HEK293T cells; Right: Cell lysates from HEK293T cells transfected with RC200416 using transfection reagent MegaTran 2.0 (Cat# [TT210002]).



Coomassie blue staining of purified SNRPF protein (Cat# [TP300416]). The protein was produced from HEK293T cells transfected with SNRPF cDNA clone (Cat# RC200416) using MegaTran 2.0 (Cat# [TT210002]).