

Product datasheet for **RC200411**

TGFBI (NM_000358) Human Tagged ORF Clone

Product data:

Product Type:	Expression Plasmids
Product Name:	TGFBI (NM_000358) Human Tagged ORF Clone
Tag:	Myc-DDK
Symbol:	TGFBI
Synonyms:	BIGH3; CDB1; CDG2; CDGG1; CSD; CSD1; CSD2; CSD3; EBMD; LCD1
Mammalian Cell Selection:	Neomycin
Vector:	pCMV6-Entry (PS100001)
E. coli Selection:	Kanamycin (25 ug/mL)



[View online »](#)

ORF Nucleotide Sequence:

>RC200411 ORF sequence
 Red=Cloning site Blue=ORF Green=Tags(s)

TTTTGTAATACGACTCACTATAGGGCGGCCGGGAATTCGTCGACTGGATCCGGTACCGAGGAGATCTGCC
 GCC**CGCATCGCC**

ATGGCGCTCTTCGTGCGGCTGTGGCTCTCGCCCTGGCTCTGGCCCTGGGCCCGCCGCGACCCCTGGCGG
 GTCCCGCCAAGTCGCCCTACCAGCTGGTGTGCAGCACAGCAGGCTCCGGGGCCGCGAGCAGGCCCCAA
 CGTGTGTGCTGTGCAGAAGGTTATTGGCACTAATAGGAAGTACTTCACCAACTGCAAGCAGTGGTACCAA
 AGGAAAATCTGTGGCAAATCAACAGTCATCAGCTACGAGTGTCTCTGGATATGAAAAGGTCCTGGGG
 AGAAGGGCTGTCCAGCAGCCCTACCACTCTCAAACCTTTACGAGACCCTGGGAGTCGTTGGATCCACCAC
 CACTCAGCTGTACACGGACCGCACGGAGAAGCTGAGGCCCTGAGATGGAGGGGCCCGCAGCTTCACCATC
 TTCGCCCTAGCAACGAGGCCTGGGCTCCTTGCCAGCTGAAGTGTGGACTCCCTGGTCAGCAATGTCA
 ACATTGAGCTGTCAATGCCCTCCGCTACCATATGGTGGCAGGGCAGTCTGACTGATGAGCTGAAACA
 CGGCATGACCCTCACCTCTATGTACCAGAAATCCAACATCCAGATCCACCCTATCCTAATGGGATTGTA
 ACTGTGAACTGTGCCCGGCTGTGAAAGCCGACCACCATGCAACCAACGGGGTGGTGCACCTCATCGATA
 AGGTCATCTCCACCATCACCAACAACATCCAGCAGATCATTGAGATCGAGGACACCTTTGAGACCCTTCG
 GGCTGTGTGGCTGCATCAGGGCTCAACACGATGCTTGAAGGTAACGGCCAGTACACGCTTTTGGCCCCG
 ACCAATGAGGCCTTCGAGAAGATCCCTAGTGAGACTTTGAACCGTATCCTGGGCGACCCAGAAGCCCTGA
 GAGACCTGCTGAACAACACATCTTGAAGTCAGCTATGTGTGCTGAAGCCATCGTTGCGGGGCTGTCTGT
 GGAGACCTGGAGGGCACGACTGGAGGTGGGCTGCAGCGGGGACATGCTCACTATCAACGGGAAGGGC
 ATCATCTCCAATAAAGACATCTAGCCACCAACGGGGTGTACTACTACATTGATGAGCTACTCATCCAG
 ACTCAGCCAAGACACTATTTGAATTGGCTGCAGAGTCTGATGTGTCCACAGCCATTGACCTTTTCAGACA
 AGCCGGCCTCGGCAATCATCTCTCTGGAAGTGAGCGGTTGACCCTCCTGGCTCCCCTGAATTCTGTATTC
 AAAGATGGAACCCCTCCAATTGATGCCATAACAAGGAATTTGCTTCGGAACCACATAAATTAAGACCAGC
 TGGCCTCTAAGTATCTGTACCATGGACAGACCCTGAAACTCTGGGCGGCAAAAACTGAGAGTTTTTGT
 TTATCGTAATAGCCTTTGCATTGAGAACAGCTGCATCGCGGCCACGACAAGAGGGGGAGGTACGGGACC
 CTGTTACGATGGACCGGGTGTGACCCCCCAATGGGGACTGTCATGGATGTCTGAAGGGAGACAATC
 GCTTTAGCATGCTGGTAGCTGCCATCCAGTCTGCAGGACTGACGGAGACCCTCAACCGGGAAGGAGTCTA
 CACAGTCTTCGCTCCACAAATGAAGCCTTCGAGCCCTGCCACCAAGAGAACGGAGCAGACTCTTGGGA
 GATGCCAAGGAATTGCCAACATCCTGAAATACCACATTTGGTGTGAAATCCTGGTTAGCGGAGGCATCG
 GGGCCCTGGTGCAGCTAAAGTCTCTCAAGGTGACAAGCTGGAAGTCAGCTTGAAAAACAATGTGGTGA
 GTCAACAAGGAGCCTGTTGCCGAGCCTGACATCATGGCCACAAATGGCGTGGTCCATGTATCACAAT
 GTTCTGCAGCCTCCAGCCAACAGACCTCAGGAAAGAGGGGATGAACTTGCAGACTCTGCGCTTGAGATCT
 TCAAACAAGCATCAGCGTTTTCCAGGGCTCCAGAGGTCTGTGCGACTAGCCCCGTCTATCAAAGTT
 ATTAGAGAGGATGAAGCAT

ACGCGTACGCGGGCCGCTCGAGCAGAAACTCATCTCAGAAGAGGATCTGGCAGCAAATGATATCCTGGATT
 ACAAGGATGACGACGATAAAGTTTAA

Protein Sequence: >RC200411 protein sequence
Red=Cloning site Green=Tags(s)

```
MALFVRLALALALGPAATLAGPAKSPYQLVLQHSRLRGRQHGPNVCAVQKVIQGNRKYFTNCKQWYQ
RKICGKSTVIVSYECCPGYEKVPGEKGCPCALPLSNLYETLGVVGGSTTTQLYTDRETEKLRPEMEGPGSFTI
FAPSNEAWASLPAEVLDSLVSNNVNIELLNALRYHVMGRRVLTDELKHGMLTSMYQNSNIQIHHYPNGIV
TVNCARLLKADHHATNGVVHLIDKVIKSTIINNIQIQIEIEDTFETLRAAVAASGLNTMLEGNGQYTLAP
TNEAFEKIPSETLNRILGDPEALRDLLNNHILKSAMCAEATVAGLSVETLEGTTLEVGCSDMLTINGKA
IISNKDILATNGVIHYIDELLIPDSAKTLFELAAESDVSTAIDLFRQAGLGNHLSGSRLLTLLAPLNSVF
KDGTPPIDAHTRNLLRNHIKDKQLASKYLYHGQTLETGGKLRVVFYRNSLCIENSCIAAHDKRGRYGT
LFTMDRVLTPPMGTVMVDLKGDNRF SMLVAIQSAGLTETLNREGVYTVFAPTNEAFRALPPRERSRLLG
DAKELANILKYHIGDEILVSGGIGALVRLKSLQGDKLEVLKNNVSVNKEPVAEPDIMATNGVVHVITN
VLQPPANRPQERGDLEADSALEIFKQASAFSRASQRSVRLAPVYQKLLERMKH
```

TRTRPLEQKLISEEDLAANDILDYKDDDDKV

Chromatograms: https://cdn.origene.com/chromatograms/mk6209_e04.zip

Restriction Sites: SgfI-MluI

Cloning Scheme:



ACCN: NM_000358

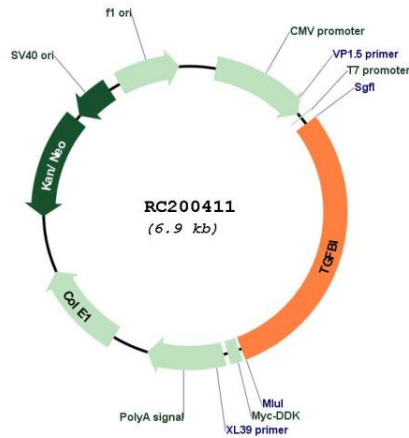
ORF Size: 2049 bp

OTI Disclaimer: The molecular sequence of this clone aligns with the gene accession number as a point of reference only. However, individual transcript sequences of the same gene can differ through naturally occurring variations (e.g. polymorphisms), each with its own valid existence. This clone is substantially in agreement with the reference, but a complete review of all prevailing variants is recommended prior to use. [More info](#)

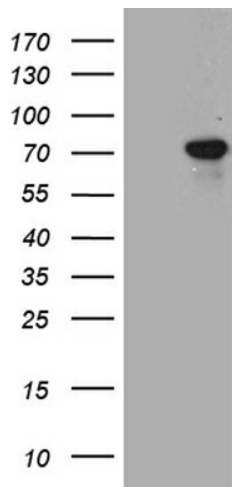
OTI Annotation: This clone was engineered to express the complete ORF with an expression tag. Expression varies depending on the nature of the gene.

Components:	The ORF clone is ion-exchange column purified and shipped in a 2D barcoded Matrix tube containing 10ug of transfection-ready, dried plasmid DNA (reconstitute with 100 ul of water).
Reconstitution Method:	<ol style="list-style-type: none">1. Centrifuge at 5,000xg for 5min.2. Carefully open the tube and add 100ul of sterile water to dissolve the DNA.3. Close the tube and incubate for 10 minutes at room temperature.4. Briefly vortex the tube and then do a quick spin (less than 5000xg) to concentrate the liquid at the bottom.5. Store the suspended plasmid at -20°C. The DNA is stable for at least one year from date of shipping when stored at -20°C.
Note:	Plasmids are not sterile. For experiments where strict sterility is required, filtration with 0.22um filter is required.
RefSeq:	<u>NM_000358.3</u>
RefSeq Size:	2805 bp
RefSeq ORF:	2052 bp
Locus ID:	7045
UniProt ID:	<u>Q15582</u>
Cytogenetics:	5q31.1
Domains:	FAS1
Protein Families:	Druggable Genome, Secreted Protein, Transmembrane
MW:	74.7 kDa
Gene Summary:	This gene encodes an RGD-containing protein that binds to type I, II and IV collagens. The RGD motif is found in many extracellular matrix proteins modulating cell adhesion and serves as a ligand recognition sequence for several integrins. This protein plays a role in cell-collagen interactions and may be involved in endochondrial bone formation in cartilage. The protein is induced by transforming growth factor-beta and acts to inhibit cell adhesion. Mutations in this gene are associated with multiple types of corneal dystrophy. [provided by RefSeq, Jul 2008]

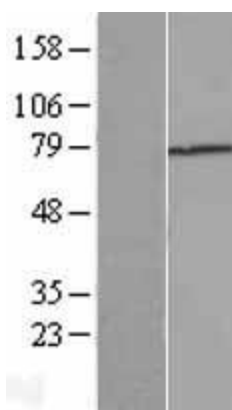
Product images:



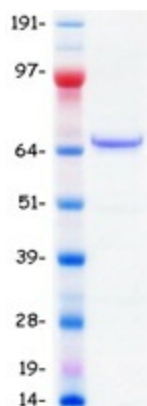
Circular map for RC200411



HEK293T cells were transfected with the pCMV6-ENTRY control (Cat# [PS100001], Left lane) or pCMV6-ENTRY TGFBI (Cat# RC200411, Right lane) cDNA for 48 hrs and lysed. Equivalent amounts of cell lysates (5 ug per lane) were separated by SDS-PAGE and immunoblotted with anti-TGFBI (Cat# [TA805390])(1:500). Positive lysates [LY424775] (100ug) and [LC424775] (20ug) can be purchased separately from OriGene.



Western blot validation of overexpression lysate (Cat# [LY424775]) using anti-DDK antibody (Cat# [TA50011-100]). Left: Cell lysates from untransfected HEK293T cells; Right: Cell lysates from HEK293T cells transfected with RC200411 using transfection reagent MegaTran 2.0 (Cat# [TT210002]).



Coomassie blue staining of purified TGFBI protein (Cat# [TP300411]). The protein was produced from HEK293T cells transfected with TGFBI cDNA clone (Cat# RC200411) using MegaTran 2.0 (Cat# [TT210002]).