

Product datasheet for **RC200408**

gamma Tubulin (TUBG1) (NM_001070) Human Tagged ORF Clone

Product data:

Product Type:	Expression Plasmids
Product Name:	gamma Tubulin (TUBG1) (NM_001070) Human Tagged ORF Clone
Tag:	Myc-DDK
Symbol:	gamma Tubulin
Synonyms:	CDCBM4; GCP-1; TUBG; TUBGCP1
Mammalian Cell Selection:	Neomycin
Vector:	pCMV6-Entry (PS100001)
E. coli Selection:	Kanamycin (25 ug/mL)



[View online »](#)

ORF Nucleotide Sequence:

>RC200408 ORF sequence
 Red=Cloning site Blue=ORF Green=Tags(s)

TTTTGTAATACGACTCACTATAGGGCGGCCGGGAATTCGTCGACTGGATCCGGTACCGAGGAGATCTGCC
 GCC**GCGATCGCC**

ATGCCAGGGAAATCATCACCTACAGTTGGGCCAGTGC GGCAATCAGATTGGGTTGCGATTCTGGAAC
 AGCTGTGCGCCGAGCATGGTATCAGCCCGAGGCATCGTGGAGGAGTTCGCCACCGAGGGCACTGACCG
 CAAGGACGTCTTTTTCTACCAGGCAGACGATGAGCACTACATCCCCGGGCCGTGCTGCTGGACTTGAA
 CCCCGGGTGATCCACTCCATCCTCAACTCCCCCTATGCCAAGCTCTACAACCCAGAGAACATCTACCTGT
 CGGAACATGGAGGAGGAGCTGGCAACAAGTGGGCCAGCGGATTCTCCAGGGAGAAAAGATCCATGAGGA
 CTTTTTTGACATCATAGACCGGGAGGCAGATGGTAGTGACAGTCTAGAGGGCTTTGTGCTGTGCTACTCC
 ATTGCTGGGGGGACAGGCTCTGGACTGGTTCTACCTCTTAGAACGGCTGAATGACAGGTATCCTAAGA
 AGCTGGTGACACATACTCAGTGTTCACAACCCAGGACGAGATGAGCGATGTGGTGGTCCAGCCTTACAA
 TTRACTCTCACACTCAAGAGGCTGACGCAGAATGCAGACTGTGTGGTGGTGTGGACAACACAGCCCTG
 AACCGGATTGCCACAGACCGCCTGCACATCCAGAACCCATCCTTCTCCAGATCAACCAGCTGGTGTCTA
 CCATCATGTACGCCAGCACACCACCCTGCGCTACCCTGGCTACATGAACAATGACCTCATCGGCCCTCAT
 CGCCTCGCTATTCCCACCCACGGCTCCACTTCTCATGACCGGCTACACCCCTCTCACTACGGACCAG
 TCAGTGGCCAGCGTGAGGAAGACCACGGTCTGGATGTCATGAGGCGGCTGCTGCAGCCCAAGAACGTGA
 TGGTGTCCACAGGCCGAGACCGCCAGACCAACCACTGCTACATCGCCATCCTCAACATCATCCAGGGAGA
 GGTGGACCCACCCAGGTCCACAAGAGCTTGACAGAGTCCGGGAACGCAAGTTGGCCAACCTTATCCCG
 TGGGGCCCCGCCAGCATCCAGGTGGCCCTGTGAGGAAGTCTCCCTACCTGCCCTCGGCCACCGGGTCA
 CGGGGCTCATGATGGCCAACACACAGCATCTCCTCGCTCTTCGAGAGAACCTGTGCGCCAGTATGACAA
 GCTGCGTAAGCGGGAGGCCCTTCTGGAGCAGTTCGCAAGGAGGACATGTTCAAGGACAACCTTTGATGAG
 ATGGACACATCCAGGGAGATTGTGCAGCAGCTCATCGATGAGTACCATGCGGCCACACGGCCAGACTACA
 TCTCCTGGGGCACCCAGGAGCAG

ACGCGTACGCGGCCGCTCGAGCAGAACTCATCTCAGAAGAGGATCTGGCAGCAAATGATATCCTGGATT
 ACAAGGATGACGACGATAAGGTTTAA

Protein Sequence:

>RC200408 protein sequence
 Red=Cloning site Green=Tags(s)

MPREIITLQLGQCGNQIGFEFWKQLCAEHGISPEGIVEEFATEGTRKDVFFYQADDEHYIPRAVLLDLE
 PRVIHLSILNSPYAKLYNPENIYLSEHGGGAGNNWASGFSQGEKIHEIDIFDIIDREADGSDSLEGLVCHS
 IAGGTGSLGSYLLERLNDRYPKKLVQYTSVFPNQDEMSDVVVQPYNSLLTLKRLTQNADCVVLDNTAL
 NRIATDRLHIQNPSFSQINQLVSTIMSASTTLRYPGYMNNDLIGLIASLIPTPRLHFLMTGYTPLTTDQ
 SVASVRKTTVLDMRRLLPKNVMVSTGRDRQTNHCYIAILNIIQGEVDPQVHKSQRIRERKLANFIP
 WGPASIQVALSRKSPYLP SAHRVSGLMANHTSISL FERTCRQYDKLRKREAFLEQFRKEDMFKDNFDE
 MDT SREIVQQLIDEYHAATRPDYISWGTQEQ

TRTRPLEQKLISEEDLAANDILDYKDDDDKV

Chromatograms:

https://cdn.origene.com/chromatograms/mk6178_b02.zip

Restriction Sites:

Sgfl-Mlul

Cloning Scheme:



ACCN: NM_001070

ORF Size: 1353 bp

OTI Disclaimer: The molecular sequence of this clone aligns with the gene accession number as a point of reference only. However, individual transcript sequences of the same gene can differ through naturally occurring variations (e.g. polymorphisms), each with its own valid existence. This clone is substantially in agreement with the reference, but a complete review of all prevailing variants is recommended prior to use. [More info](#)

OTI Annotation: This clone was engineered to express the complete ORF with an expression tag. Expression varies depending on the nature of the gene.

Components: The ORF clone is ion-exchange column purified and shipped in a 2D barcoded Matrix tube containing 10ug of transfection-ready, dried plasmid DNA (reconstitute with 100 ul of water).

Reconstitution Method:

1. Centrifuge at 5,000xg for 5min.
2. Carefully open the tube and add 100ul of sterile water to dissolve the DNA.
3. Close the tube and incubate for 10 minutes at room temperature.
4. Briefly vortex the tube and then do a quick spin (less than 5000xg) to concentrate the liquid at the bottom.
5. Store the suspended plasmid at -20°C. The DNA is stable for at least one year from date of shipping when stored at -20°C.

Note: Plasmids are not sterile. For experiments where strict sterility is required, filtration with 0.22um filter is required.

RefSeq: [NM_001070.5](#)

RefSeq Size: 1968 bp

RefSeq ORF: 1356 bp

Locus ID: 7283

UniProt ID: [P23258](#)

Cytogenetics: 17q21.2

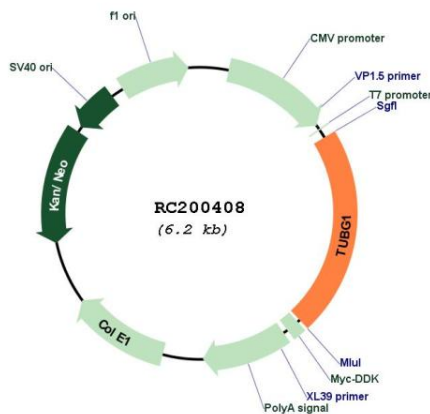
Domains: tubulin

Protein Families: Druggable Genome

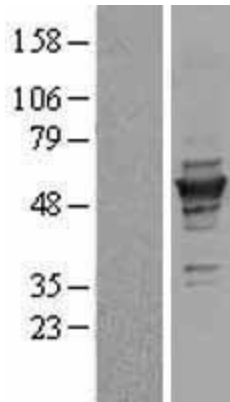
MW: 51.2 kDa

Gene Summary: This gene encodes a member of the tubulin superfamily. The encoded protein localizes to the centrosome where it binds to microtubules as part of a complex referred to as the gamma-tubulin ring complex. The protein mediates microtubule nucleation and is required for microtubule formation and progression of the cell cycle. A pseudogene of this gene is found on chromosome 7. [provided by RefSeq, Jan 2009]

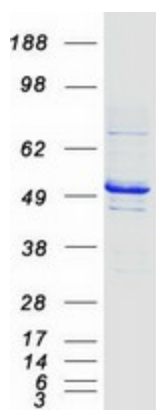
Product images:



Circular map for RC200408



Western blot validation of overexpression lysate (Cat# [LY400439]) using anti-DDK antibody (Cat# [TA50011-100]). Left: Cell lysates from untransfected HEK293T cells; Right: Cell lysates from HEK293T cells transfected with RC200408 using transfection reagent MegaTran 2.0 (Cat# [TT210002]).



Coomassie blue staining of purified TUBG1 protein (Cat# [TP300408]). The protein was produced from HEK293T cells transfected with TUBG1 cDNA clone (Cat# RC200408) using MegaTran 2.0 (Cat# [TT210002]).