

Product datasheet for **RC200407**

UBE2G2 (NM_003343) Human Tagged ORF Clone

Product data:

Product Type: Expression Plasmids
Product Name: UBE2G2 (NM_003343) Human Tagged ORF Clone
Tag: Myc-DDK
Symbol: UBE2G2
Synonyms: UBC7
Mammalian Cell Selection: Neomycin
Vector: pCMV6-Entry (PS100001)
E. coli Selection: Kanamycin (25 ug/mL)
ORF Nucleotide Sequence: >RC200407 ORF sequence
 Red=Cloning site Blue=ORF Green=Tags(s)

TTTTGTAATACGACTCACTATAGGGCGCCGGGAATTCGTCGACTGGATCCGGTACCGAGGAGATCTGCC
 GCC**CGATCGCC**

ATGGCGGGGACCGCGCTCAAGAGGCTGATGGCCGAGTACAACAATTAACACTGAATCCTCCGGAAGGAA
 TTGTAGCAGGCCCATGAATGAAGAGAAGCTTTTTGAATGGGAGGCATTGATCATGGGCCAGAAGACAC
 CTGCTTTGAGTTGGTGTTCCTGCCATCCTGAGTTTCCCACTTGATTACCCGTTAAGTCCCCAAAG
 ATGAGATTTACCTGTGAGATGTTTCATCCCAACATCTACCCTGATGGGAGAGTCTGCATTTCCATCTCC
 ACGCGCCAGGCGATGACCCCATGGGCTACGAGAGCAGCGGAGCGGTGGAGTCTGTGCAGAGTGTGGA
 GAAGATCCTGCTGTCGGTGGTGAAGATGCTGGCAGAGCCCAATGACGAAAGTGGAGCTAACGTGGATGCG
 TCCAAAATGTGGCGCGATGACCGGGAGCAGTTCTATAAGATTGCCAAGCAGATCGTCCAGAAGTCTCTGG
 GACTG

ACGCGTACGCGGCCGCTCGAGCAGAACTCATCTCAGAAGAGGATCTGGCAGCAAATGATATCCTGGATT
 ACAAGGATGACGACGATAAGGTTTAA

Protein Sequence: >RC200407 protein sequence
 Red=Cloning site Green=Tags(s)

MAGTALKRLMAEYKQLTLNPPEGIVAGPMNEENFFEWALIMGPEDTCFEFGVFPAILSFPLDYPLSPPK
 MRFTCEMFHPNIYPDGRVCISILHAPGDDPMGYESSAERWSPVQSVKILLSVVSMLEPNDESGANVDA
 SKMWRDDREQFYKIAKQIVQKSLGL

TRTRPLEQKLISEEDLAANDILDYKDDDDKV

Chromatograms: https://cdn.origene.com/chromatograms/mk6082_a05.zip



[View online »](#)

Restriction Sites: SgfI-MluI

Cloning Scheme:



ACCN: NM_003343

ORF Size: 495 bp

OTI Disclaimer: The molecular sequence of this clone aligns with the gene accession number as a point of reference only. However, individual transcript sequences of the same gene can differ through naturally occurring variations (e.g. polymorphisms), each with its own valid existence. This clone is substantially in agreement with the reference, but a complete review of all prevailing variants is recommended prior to use. [More info](#)

OTI Annotation: This clone was engineered to express the complete ORF with an expression tag. Expression varies depending on the nature of the gene.

Components: The ORF clone is ion-exchange column purified and shipped in a 2D barcoded Matrix tube containing 10ug of transfection-ready, dried plasmid DNA (reconstitute with 100 ul of water).

Reconstitution Method:

1. Centrifuge at 5,000xg for 5min.
2. Carefully open the tube and add 100ul of sterile water to dissolve the DNA.
3. Close the tube and incubate for 10 minutes at room temperature.
4. Briefly vortex the tube and then do a quick spin (less than 5000xg) to concentrate the liquid at the bottom.
5. Store the suspended plasmid at -20°C. The DNA is stable for at least one year from date of shipping when stored at -20°C.

Note: Plasmids are not sterile. For experiments where strict sterility is required, filtration with 0.22um filter is required.

RefSeq: [NM_003343.6](#)

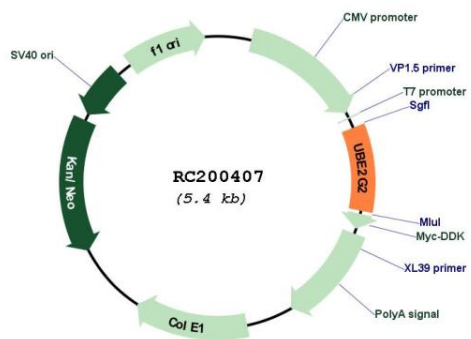
RefSeq Size: 3400 bp

RefSeq ORF: 498 bp

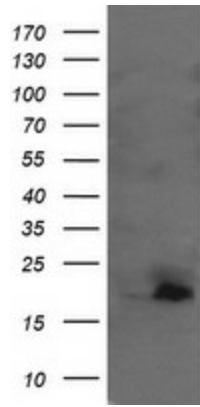
Locus ID: 7327
UniProt ID: [P60604](#)
Cytogenetics: 21q22.3
Domains: UBCc
Protein Families: Druggable Genome
Protein Pathways: Parkinson's disease, Ubiquitin mediated proteolysis
MW: 18.6 kDa

Gene Summary: The modification of proteins with ubiquitin is an important cellular mechanism for targeting abnormal or short-lived proteins for degradation. Ubiquitination involves at least three classes of enzymes: ubiquitin-activating enzymes, or E1s, ubiquitin-conjugating enzymes, or E2s, and ubiquitin-protein ligases, or E3s. This gene encodes a member of the E2 ubiquitin-conjugating enzyme family. The encoded protein shares 100% sequence identity with the mouse counterpart. This gene is ubiquitously expressed, with high expression seen in adult muscle. Three alternatively spliced transcript variants encoding distinct isoforms have been found for this gene. [provided by RefSeq, Jan 2011]

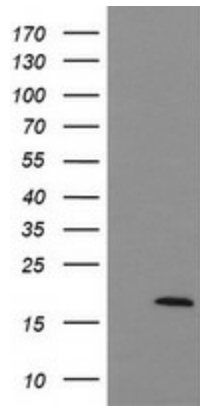
Product images:



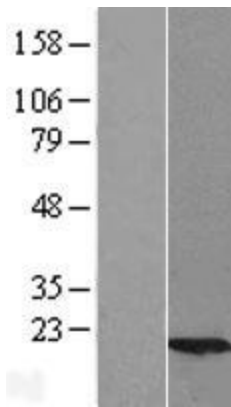
Circular map for RC200407



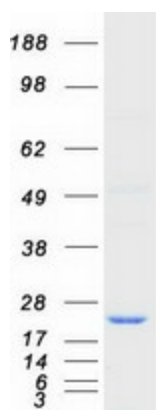
HEK293T cells were transfected with the pCMV6-ENTRY control (Cat# [PS100001], Left lane) or pCMV6-ENTRY UBE2G2 (Cat# RC200407, Right lane) cDNA for 48 hrs and lysed. Equivalent amounts of cell lysates (5 ug per lane) were separated by SDS-PAGE and immunoblotted with anti-UBE2G2 (Cat# [TA505259]). Positive lysates [LY418761] (100ug) and [LC418761] (20ug) can be purchased separately from OriGene.



HEK293T cells were transfected with the pCMV6-ENTRY control (Left lane) or pCMV6-ENTRY UBE2G2 (RC200407, Right lane) cDNA for 48 hrs and lysed. Equivalent amounts of cell lysates (5 ug per lane) were separated by SDS-PAGE and immunoblotted with anti-UBE2G2 ([TA505263]). Positive lysates [LY418761] (100ug) and [LC418761] (20ug) can be purchased separately from OriGene.



Western blot validation of overexpression lysate (Cat# [LY418761]) using anti-DDK antibody (Cat# [TA50011-100]). Left: Cell lysates from untransfected HEK293T cells; Right: Cell lysates from HEK293T cells transfected with RC200407 using transfection reagent MegaTran 2.0 (Cat# [TT210002]).



Coomassie blue staining of purified UBE2G2 protein (Cat# [TP300407]). The protein was produced from HEK293T cells transfected with UBE2G2 cDNA clone (Cat# RC200407) using MegaTran 2.0 (Cat# [TT210002]).