

Product datasheet for **RC200404**

Ezrin (EZR) (NM_003379) Human Tagged ORF Clone

Product data:

Product Type:	Expression Plasmids
Product Name:	Ezrin (EZR) (NM_003379) Human Tagged ORF Clone
Tag:	Myc-DDK
Symbol:	Ezrin
Synonyms:	CVIL; CVL; HEL-S-105; VIL2
Mammalian Cell Selection:	Neomycin
Vector:	pCMV6-Entry (PS100001)
E. coli Selection:	Kanamycin (25 ug/mL)



[View online »](#)

ORF Nucleotide Sequence:

>RC200404 ORF sequence
 Red=Cloning site Blue=ORF Green=Tags(s)

TTTTGTAATACGACTCACTATAGGGCGGCCGGAATTCGTCGACTGGATCCGGTACCGAGGAGATCTGCC
 GCC**CGCATCGCC**

ATGCCGAAACCAATCAATGTCCGAGTTACCACCATGGATGCAGAGCTGGAGTTTGAATCCAGCCAAATA
 CAACTGGAAAACAGCTTTTTGATCAGGTGGTAAAGACTATCGGCCTCCGGGAAGTGTGGTACTTTGGCCT
 CCACTATGTGGATAATAAAGGATTTCTACCTGGCTGAAGCTGGATAAGAAGGTGTCTGCCCAGGAGGTC
 AGGAAGGAGAATCCCCTCAGTTCAAGTTCGGGCCAAGTTCTACCCTGAAGATGTGGTGAGGAGCTCA
 TCCAGGACATCACCCAGAAACTTTTCTCCTCAAGTGAAGGAAGGAATCCTTAGCGATGAGATCTACTG
 CCCCCCTGAGACTGCCGTGCTCTGGGGTCTACGCTGTGCAGGCCAAGTTTGGGGACTACAACAAAGAA
 GTGCACAAGTCTGGGTACCTCAGCTCTGAGCGGCTGATCCCTCAAAGAGTGATGGACCAGCACAACTTA
 CCAGGGACCAGTGGGAGGACCGGATCCAGGTGTGGCATGCGGAACACCGTGGGATGCTCAAAGATAATGC
 TATGTTGGAATACCTGAAGATTGCTCAGGACCTGGAAATGTATGGAATCAACTATTTTCGAGATAAAAAAC
 AAGAAAGGAACAGACCTTTGGCTTGGAGTTGATGCCCTTGGACTGAATATTTATGAGAAAGATGATAAGT
 TAACCCCAAAGATTGGCTTTCTTGGAGTGAAATCAGGAACATCTCTTCAATGACAAAAAGTTTGTTCAT
 TAAACCCATCGACAAGAAGGCACCTGACTTTGTGTTTTATGCCCCACGTCTGAGAATCAACAAGCGGATC
 CTGCAGCTCTGCATGGGCAACCATGAGTTGTATATGCGCCGAGGAAAGCCTGACACCATCGAGGTGCAGC
 AGATGAAGGCCAGGCCCGGGAGGAGAAGCATCAGAAGCAGCTGGAGCGGCAACAGCTGGAAACAGAGAA
 GAAAAGGAGAGAAACCGTGGAGAGAGAGAAAGAGCAGATGATGCGCGAGAAGGAGGAGTTGATGCTGCGG
 CTGCAGGACTATGAGGAGAAGACAAGAAGGCAGAGAGAGAGCTCTCGGAGCAGATTTCAGAGGGCCCTGC
 AGCTGGAGGAGGAGGAAGCGGCCACAGGAGGAGGCCGAGCGCCTAGAGGCTGACCGTATGGCTGCGACT
 GCGGGCTAAGGAGGAGCTGGAGAGACAGGCGGTGGATCAGATAAAGAGCCAGGAGCAGCTGGCTCGGGAG
 CTTGCAGAATACTGCAAGATTGCCCTCCTGGAAGAGCGCGGAGGCCAAGGAGGATGAAGTTGAAG
 AGTGGCAGCACAGGGCCAAAGAAGCCAGGATGACCTGGTGAAGACCAAGGAGGAGCTGCACCTGGTGTAT
 GACAGCACCCCGCCCCACCACCCCGTGTACGAGCCGGTGTGCTACCATGTCCAGGAGAGCTTGCAG
 GATGAGGGCGCAGAGCCACGGGCTACAGCGGGAGCTGTCTAGTGAGGGCATCCGGGATGACCGCAATG
 AGGAGAAGCGCATCACTGAGGCAGAGAAGAAGCAGCGTGTGCAGCGCAGCTGCTGACGCTGAGCAGCGA
 GCTGTCCAGGCCGAGATGAGAATAAGAGGACCCACAATGACATCATCCACAACGAGAACATGAGGCAA
 GGCCGGGACAAGTACAAGACGCTGCGGCAGATCCGGCAGGGCAACACCAAGCAGCGCATCGACGAGTTCC
 AGGCCCTG

ACGCGTACGCGGCCGCTCGAGCAGAAACTCATCTCAGAAGAGGATCTGGCAGCAAATGATATCCTGGATT
 ACAAGGATGACGACGATAAGGTTTAA

Protein Sequence:

>RC200404 protein sequence
 Red=Cloning site Green=Tags(s)

MPKPINVRVTTMDAELEFAIQPNTTGKQLFDQVVKITGLREVWYFGLHYVDNKGFPWLKLDKKVSAQEV
 RKENPLQFKFRAKFPEDVAEELIQDITQKLFLLQVKEGILSDEIYCPPETAVLLGSYAVQAKFGDYNKE
 VHKSGYLSSERLIPQRVMDQHKLTRDQWEDRIQVWHAHRGMLKDNAMLEYLKIAQDLEMYGINYFEIKN
 KKGTDLWLGVDALGLNIYEKDDKLPKIGFPWSEIRNISFNDDKFKVFKPIDKKAPDFVFYAPRLRINKRI
 LQLCMGNHEL YMRRRKPDTEVQQMKAQAREEKHQKQLERQOLETEKKRRETVEREKEQMMREKEELMLR
 LQDYEEKTKKAERELSEIQRALQLEEERKRAQEEAERLEADRMAALRAKEELERQAVDQIKSQEQLAAE
 LAEYTAIALL EARRRKEDEVEEWQHRAKEAQDDL VKTKEELHLVMTAPPPPPPVYEPVSYHVQESLQ
 DEGAEPTGYSAE LSSGIRDRRNEEKRITEAEKNERVQRQLLTLSSELS QARDENKRTHNDIIHNENMRQ
 GRDKYKTLRQIRQNTKQRIDEFEAL

TRTRPLEQKLISEEDLAANDILDYKDDDDKV

Chromatograms:

https://cdn.origene.com/chromatograms/mk6153_a11.zip

Restriction Sites: SgfI-MluI

Cloning Scheme:



ACCN: NM_003379

ORF Size: 1758 bp

OTI Disclaimer: Due to the inherent nature of this plasmid, standard methods to replicate additional amounts of DNA in *E. coli* are highly likely to result in mutations and/or rearrangements. Therefore, OriGene does not guarantee the capability to replicate this plasmid DNA. Additional amounts of DNA can be purchased from OriGene with batch-specific, full-sequence verification at a reduced cost. Please contact our customer care team at custsupport@origene.com or by calling 301.340.3188 option 3 for pricing and delivery.

The molecular sequence of this clone aligns with the gene accession number as a point of reference only. However, individual transcript sequences of the same gene can differ through naturally occurring variations (e.g. polymorphisms), each with its own valid existence. This clone is substantially in agreement with the reference, but a complete review of all prevailing variants is recommended prior to use. [More info](#)

OTI Annotation: This clone was engineered to express the complete ORF with an expression tag. Expression varies depending on the nature of the gene.

Components: The ORF clone is ion-exchange column purified and shipped in a 2D barcoded Matrix tube containing 10ug of transfection-ready, dried plasmid DNA (reconstitute with 100 ul of water).

Reconstitution Method:

1. Centrifuge at 5,000xg for 5min.
2. Carefully open the tube and add 100ul of sterile water to dissolve the DNA.
3. Close the tube and incubate for 10 minutes at room temperature.
4. Briefly vortex the tube and then do a quick spin (less than 5000xg) to concentrate the liquid at the bottom.
5. Store the suspended plasmid at -20°C. The DNA is stable for at least one year from date of shipping when stored at -20°C.

Note: Plasmids are not sterile. For experiments where strict sterility is required, filtration with 0.22um filter is required.

RefSeq: [NM_003379.5](#)

RefSeq Size: 3172 bp

RefSeq ORF: 1761 bp

Locus ID: 7430

UniProt ID: [P15311](#)

Cytogenetics: 6q25.3

Domains: B41, ERM

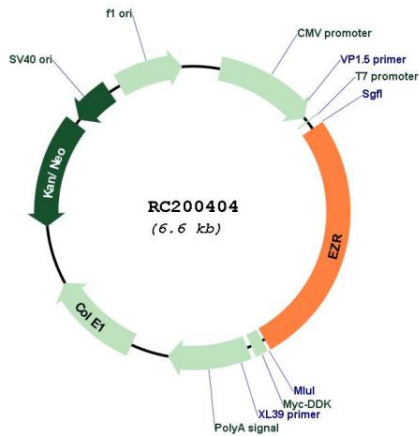
Protein Families: Druggable Genome

Protein Pathways: Leukocyte transendothelial migration, Pathogenic Escherichia coli infection, Regulation of actin cytoskeleton

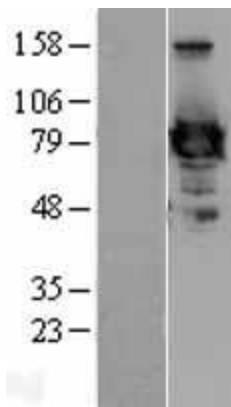
MW: 69.4 kDa

Gene Summary: The cytoplasmic peripheral membrane protein encoded by this gene functions as a protein-tyrosine kinase substrate in microvilli. As a member of the ERM protein family, this protein serves as an intermediate between the plasma membrane and the actin cytoskeleton. This protein plays a key role in cell surface structure adhesion, migration and organization, and it has been implicated in various human cancers. A pseudogene located on chromosome 3 has been identified for this gene. Alternatively spliced variants have also been described for this gene. [provided by RefSeq, Jul 2008]

Product images:



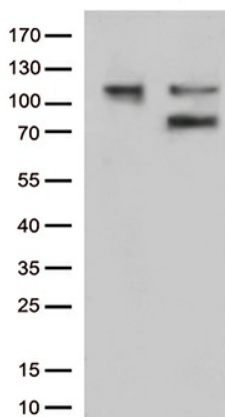
Circular map for RC200404



Western blot validation of overexpression lysate (Cat# [LY426350]) using anti-DDK antibody (Cat# [TA50011-100]). Left: Cell lysates from untransfected HEK293T cells; Right: Cell lysates from HEK293T cells transfected with [RC225989] using transfection reagent MegaTran 2.0 (Cat# [TT210002]).



Coomassie blue staining of purified EZR protein (Cat# [TP300404]). The protein was produced from HEK293T cells transfected with EZR cDNA clone (Cat# RC200404) using MegaTran 2.0 (Cat# [TT210002]).



HEK293T cells were transfected with the pCMV6-ENTRY control (Cat# [PS100001], Left lane) or pCMV6-ENTRY EZR (Cat# RC200404, Right lane) cDNA for 48 hrs and lysed. Equivalent amounts of cell lysates (5 ug per lane) were separated by SDS-PAGE and immunoblotted with anti-EZR (Cat# [TA807019])(1:500). Positive lysates [LY401164] (100ug) and [LC401164] (20ug) can be purchased separately from OriGene.