

Product datasheet for **RC200397**

KIF22 (NM_007317) Human Tagged ORF Clone

Product data:

Product Type:	Expression Plasmids
Product Name:	KIF22 (NM_007317) Human Tagged ORF Clone
Tag:	Myc-DDK
Symbol:	KIF22
Synonyms:	A-328A3.2; KID; KNSL4; OBP; OBP-1; OBP-2; SEMDJL2
Mammalian Cell Selection:	Neomycin
Vector:	pCMV6-Entry (PS100001)
E. coli Selection:	Kanamycin (25 ug/mL)



[View online »](#)

ORF Nucleotide
Sequence:

>RC200397 representing NM_007317
Red=Cloning site Blue=ORF Green=Tags(s)

TTTTGTAATACGACTCACTATAGGGCGGCCGGGAATTCGTCGACTGGATCCGGTACCGAGGAGATCTGCC
GCC**GCGATCGCC**

ATGGCCGCGGGCGGCTCGACGCAGCAGAGGCGACGCGAGATGGCGGCAGCTTCAGCGGGCGGATCTCAG
GAGCTGGTCGCTGTCGGCTAAGCAAGATTGGAGCTACTCGTCGTCCACCTCCAGCTCGCGTAAGGGTGGC
TGTGCGACTGCGGCCATTTGTGGATGGAACAGCGGGAGCAAGTGATCCCCCTGTGTGCGGGGCATGGAC
AGCTGCTCTAGAGATTGCTAACTGGAGGAACCACCAGGAGACTCTCAAATACCAGTTTGTATGCCTTCT
ATGGGGAGAGGAGTACTCAGCAGGACATCTATGCAGGTTCAAGTGCAGCCATCCTAAGGCACTTGTGGA
AGGGCAGAATGCCAGTGTGCTTGCCTATGGACCCACAGGAGCTGGGAAGACGCACACAATGCTGGGCAGC
CCAGAGCAACCTGGGGTATCCCGGGGCTCTCATGGACCTCTGCAGCTCACAAGGGAGGAGGGTGCCG
AGGGCCGGCCATGGGCCCTTTCTGTACCATGTCTTACCTAGAGATCTACCAGGAGAAGGTATTAGACCT
CCTGGACCTGCTTCGGGAGACCTGGTAATCCGAGAAGACTGCCGGGGGAATATCCTGATCCGGGTCTC
TCCAGAAAGCCATCAGTAGCTTTGCTGATTTTGAAGCGCACTTCTGCCAGCCAGTCGAAATCGGACTG
TAGGAGCCACCCGGCTCAACCAGCGCTCCTCCCGCAGTCATGCTGTGCTCCTGGTCAAGGTGGACACGG
GAAACGTTTGGCCCCATTTGCCAGCGAGAGGGAAAACCTACCTGATTGACTTGGCTGGGTGAGAGGAC
AACCAGCGCACAGGCAACAAGGGCCTTCGGCTAAAAGAGAGTGGAGCCATCAACACCTCCCTGTTTGTCC
TGGGCAAAGTGGTAGATGCGCTGAATCAGGGCCTCCCTCGTGTACCTTATCGGGACAGCAAGCTCACTCG
CCTATTGCAGGACTCTCTGGGTGGCTCAGCCCACAGTATCCTTATTGCCAACATTGCCCTGAGAGACGC
TTCTACCTAGACACAGTCTCCGCACTCACTTTGCTGCCAGGTCCAAGGAGGTGATCAATCGGCCTTTTA
CCAATGAGAGCCTGCAGCCTCATGCCTTGGGACCTGTTAAGCTGTCTCAGAAAAGAATTGCTTGGTCCACC
AGAGGCAAAGAGAGCCCGAGGCCCTGAGGAAGAGGAGATTGGGAGCCCTGAGCCATGGCAGCTCCAGCC
TCTGCCTCCAGAAACTCAGCCCCCTACAGAAGCTAAGCAGCATGGACCCGGCCATGCTGGAGCGCTCC
TCAGCTTGGACCGTCTGCTTGCCTCCAGGGGAGCCAGGGGGCCCTCTGTTGAGTACCCCAAAGCGAGA
GCGGATGGTGCTAATGAAGACAGTAGAAGAGAAGGACCTAGAGATTGAGAGGCTTAAAGACGAAGCAAAAA
GAACTGGAGGCCAAGATGTTGGCCAGAAAGGCTGAGGAAAAGGAGAACCATTGTCCACAATGCTCCGGC
CCCTTTCACATCGCACAGTACAGGGGCAAAGCCCTGAAAAGGCTGTGGTGATGCCCTACAGCTAAT
TCAGGAGCAGGCAGCATCCCAAATGCCGAGATCCACATCCTGAAGAATAAAGGCCGGAAGAGAAAGCTG
GAGTCCCTGGATGCCCTAGAGCCTGAGGAGAAGGCTGAGGACTGCTGGGAGCTACAGATCAGCCCGGAGC
TACTGGCTCATGGGCGCCAAAAATACTGGATCTGCTGAACGAAGGCTCAGCCCGAGATCTCCGCAGTCT
TCAGCGCATTGGCCGAAGAAGGCCAGCTAATCGTGGGCTGGCGGGAGCTCCACGGCCCTTCAGCCAG
GTGGAGGACCTGGAACCGTGGAGGGCATAACGGGGAAACAGATGGAGTCTTCTGAAGGCAAACATCC
TGGGTCTCGCCGCGGCCAGCGCTGTGGCGCCTCC

AG**GCGACCG**ACGCGTACGCGGCCGCTCGAGCAGAAAACCTCATCTCAGAAGAGGATCTGGCAGCAAATGATATCC
TGGATTACAAGGATGACGACGATAAGGTTTAA

Protein Sequence: >RC200397 representing NM_007317
Red=Cloning site Green=Tags(s)

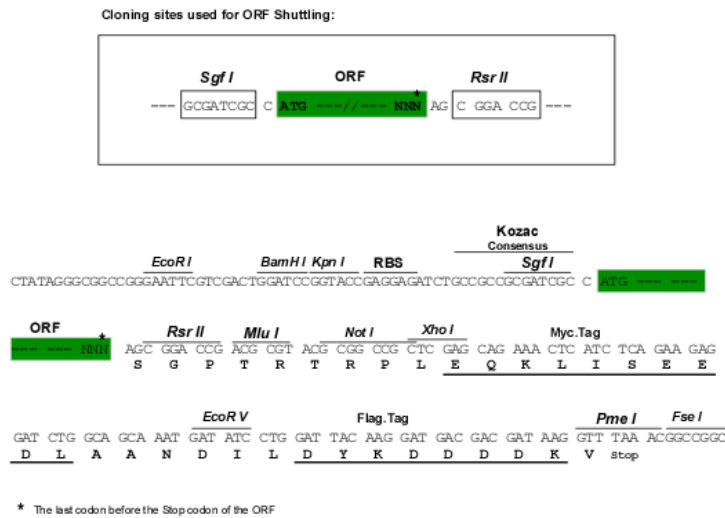
MAAGGSTQQRREMAAASAAAISGAGRCRLSKIGATRRPPPARVVRVAVRLRPFVDGTAGASDPPCVRGMD
 SCSLEIANWRNHQETLKYQFDFYGERSTQQDIYAGSVQPILRHLLLEGQNASVLAYGPTGAGKTHMLGS
 PEQPGVIPRALMDLLQLTREEGAEGRPWALSVTMSYLEIYQEKVLDLLDPASGDLVIREDCRGNILIPGL
 SQKPISSFADFERHFLPASRNRVTGATRLNQRSSRSHAVLLVKVDQRERLAPFRQREGKLYLIDLAGED
 NRRTGNKGLRLKESGAINSTLFLVLGKVVVDALNQGLPRVPYRDSKLTRLLQDSLGGSAHSILIANIAPERR
 FYLDTVSALNFAARSKEVINRPFNTESLQPHALGPVKLSQKELLGPPEAKRARGPEEEEEIGSPEPMAAPA
 SASQKLSPLQKLSMDPAMLERLLSLDRLLASQGSQGAPLLSTPKRERMVLMKTVEEKDLEIERLTKQK
 ELEAKMLAQKAEKENHCPTMLRPLSHRTVTGAKPLKAVVMPLQLIQEQAAASPNAEIHILKNKGRKRKL
 ESLDALEPEEKAEDCWELQISPELLAHGRQKILDLLNEGSARDLRSLQRIGPKKAQLIVGWRELHGPFSSQ
 VEDLERVEGITGKQMESFLKANILGLAAGQRCGAS

SGPTRRRLEQKLI SEEDLAANDILDYKDDDDKV

Chromatograms: https://cdn.origene.com/chromatograms/mg3775_b07.zip

Restriction Sites: SgfI-RsrII

Cloning Scheme:



ACCN: NM_007317

ORF Size: 1995 bp

OTI Disclaimer: Due to the inherent nature of this plasmid, standard methods to replicate additional amounts of DNA in E. coli are highly likely to result in mutations and/or rearrangements. Therefore, OriGene does not guarantee the capability to replicate this plasmid DNA. Additional amounts of DNA can be purchased from OriGene with batch-specific, full-sequence verification at a reduced cost. Please contact our customer care team at custsupport@origene.com or by calling 301.340.3188 option 3 for pricing and delivery.

The molecular sequence of this clone aligns with the gene accession number as a point of reference only. However, individual transcript sequences of the same gene can differ through naturally occurring variations (e.g. polymorphisms), each with its own valid existence. This clone is substantially in agreement with the reference, but a complete review of all prevailing variants is recommended prior to use. [More info](#)

OTI Annotation: This clone was engineered to express the complete ORF with an expression tag. Expression varies depending on the nature of the gene.

Components: The ORF clone is ion-exchange column purified and shipped in a 2D barcoded Matrix tube containing 10ug of transfection-ready, dried plasmid DNA (reconstitute with 100 ul of water).

Reconstitution Method:

1. Centrifuge at 5,000xg for 5min.
2. Carefully open the tube and add 100ul of sterile water to dissolve the DNA.
3. Close the tube and incubate for 10 minutes at room temperature.
4. Briefly vortex the tube and then do a quick spin (less than 5000xg) to concentrate the liquid at the bottom.
5. Store the suspended plasmid at -20°C. The DNA is stable for at least one year from date of shipping when stored at -20°C.

RefSeq: [NM_007317.1](#), [NP_015556.1](#)

RefSeq Size: 2097 bp

RefSeq ORF: 1998 bp

Locus ID: 3835

UniProt ID: [Q14807](#)

Cytogenetics: 16p11.2

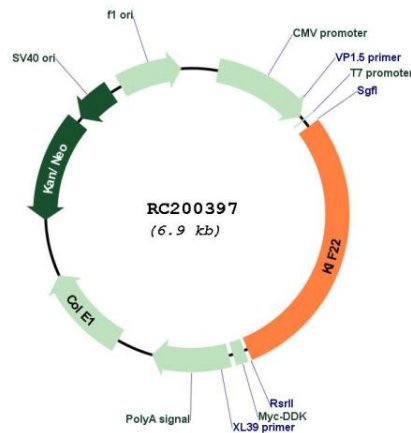
Domains: kinesin, HhH1

Protein Families: Druggable Genome

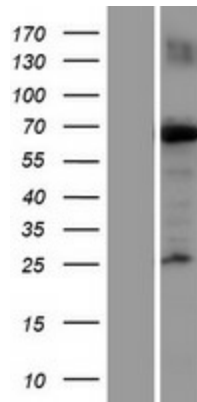
MW: 73.1 kDa

Gene Summary:

The protein encoded by this gene is a member of the kinesin-like protein family. The family members are microtubule-dependent molecular motors that transport organelles within cells and move chromosomes during cell division. The C-terminal half of this protein has been shown to bind DNA. Studies with the *Xenopus* homolog suggests its essential role in metaphase chromosome alignment and maintenance. Alternatively spliced transcript variants encoding different isoforms have been found for this gene. [provided by RefSeq, Jan 2012]

Product images:


Circular map for RC200397



Western blot validation of overexpression lysate (Cat# [LY416047]) using anti-DDK antibody (Cat# [TA50011-100]). Left: Cell lysates from untransfected HEK293T cells; Right: Cell lysates from HEK293T cells transfected with RC200397 using transfection reagent MegaTran 2.0 (Cat# [TT210002]).