

Product datasheet for **RC200396**

OXSR1 (NM_005109) Human Tagged ORF Clone

Product data:

Product Type:	Expression Plasmids
Product Name:	OXSR1 (NM_005109) Human Tagged ORF Clone
Tag:	Myc-DDK
Symbol:	OXSR1
Synonyms:	OSR1
Mammalian Cell Selection:	Neomycin
Vector:	pCMV6-Entry (PS100001)
E. coli Selection:	Kanamycin (25 ug/mL)



[View online »](#)

ORF Nucleotide Sequence:

>RC200396 ORF sequence
 Red=Cloning site Blue=ORF Green=Tags(s)

TTTTGTAATACGACTCACTATAGGGCGGCCGGAATTCGTCGACTGGATCCGGTACCGAGGAGATCTGCC
 GCC**CGCATCGCC**

ATGTCGAGGACTCGAGCGCCCTGCCCTGGTCCATCAACAGGGACGATTACGAGCTCGAGGAGGTGATCG
 GGAGTGGAGCAACTGCTGTAGTCCAAGCAGCTTATTGTGCCCTAAAAAGGAGAAAGTGGCAATCAAACG
 GATAAACCTTGAGAAATGTCAAAGTACATGGATGAAGTCTGAAAGAAATCAAGCCATGAGTCAATGC
 CATCATCTAATATTGTATCTTACTACACATCTTTTGGTAAAAGATGAGCTGTGGCTTGCATGAAGC
 TGCTAAGTGGAGTTCTGTTCTGGATATTATTAAGCACATTGTGGCAAAAGGGGAACACAAAAGTGGAGT
 CCTAGATGAATCTACCATTGCTACGATACTCCGAGAAGTACTGGAAGGGCTGGAATATCTGCATAAAAT
 GGACAGATCCACAGAGATGTAAAGCTGGAACATTCTTCTGGAGAAGATGGCTCAGTACAGATTGCAG
 ACTTTGGGGTTAGTGCTTTTTAGCAACTGGTGGTATATTACCCGAAATAAAGTGAAGAACCTTTGT
 TGGACCCCTTGTGGATGGCACCTGAAGTTATGGAACAGTCCGTGGTTATGATTTCAAAGCTGATATT
 TGGAGTTTTGGAATTACAGCAATTGAATTGGCTACAGGGCGGCTCCTTATCATAAATATCCACCAATGA
 AGGTTTTAATGCTGACACTGCAGAACGATCCTCCTTCTTGGAAACTGGTGTCAAGATAAAGAAATGCT
 GAAAAATATGAAAAATCATTTAGAAAAATGATTTTATTGTGCCCTCAAAAAGATCCAGAAAAAGACCA
 ACAGCAGCAGAACTATTAAGGCACAAATTTTTCCAGAAAGCAAAGATAAAGAAATTTCTTCAAGAAAAA
 CATTGCAGAGAGCACCAACCATTTCTGAAAGAGCAAAAAGGTTCCGAGAGTACCAGGTTCCAGTGGGCG
 TCTTCATAAGACAGAGGATGGAGGCTGGGAGTGGAGTGTATGATGAATTTGATGAAGAAAGTGAAGAGG
 AAAGCAGCAATTCACAAGTCAAGTCTCCCGAGTGAAGAATCAATATCAAATCTGAGCTCTTTCCAA
 CAACTGATCCTGTGGTACTTTGCTCCAAGTCCAGAACAGATCTGCTCATCTACCTCAGCCAGCTGG
 GCAGATTGCTACACAGCCAACTCAAGTCTCTCCACCCACCGCAGAGCCAGCAAAAACAGCTCAGGCT
 TTGCTTTCAGGATCAGGTTCAAGAAACCAAGATCCCAATCAGTCTAGTACTAAGATTAAGGAATTC
 AAAAGAATAAATGATATTCGATTTGAATTTACTCCTGGGAGAGATACAGCAGAGGGTGTCTCTCAGGA
 ACTCATTCTGCTGGCTGGTCGACGGAAGGATTTAGTAATAGTGGCAGCTAATTTGCAGAAAATGTG
 GAAGAACCTCAGTCAAATCGATCTGCTACTTTCAAAGTGGCATCTGGTGTGAAGGCTCAGATATTCCTG
 ATGATGGTAAACTGATAGGATTTGCCAGCTCAGCATCAGC

ACGCGTACGCGGCCGCTCGAGCAGAAACTCATCTCAGAAGAGGATCTGGCAGCAAATGATATCCTGGATT
 ACAAGGATGACGACGATAAGGTTTAA

Protein Sequence:

>RC200396 protein sequence
 Red=Cloning site Green=Tags(s)

MSEDSSALPWSINRDDYELQEVIIGSGATAVVQAAAYCAPKKEKVAIKRINLEKQTSMDLLEKIQAMSQC
 HHPNIVSYYSFVVKDELWLVKLLSGGSVLDIHKHIVAKGEHKSGLVDESTIATILREVLEGLYLHKN
 GQIHRDVKAGNILLGEDGSVQIADFGVSAFLATGGDITRNKVRKTFVGTPCWMAPEVMEQVRGYDFKADI
 WSFGITAIELATGAAPYHKYPPMKVLMVLTQNDPPSLETGVQDKEMLKYGKSFKRMISLCLQKDPKRP
 TAAELLRHKFFQKAKNKEFLQEKTLQRAPTISERAKKVRVPGSSGRLHKTEDGGWEWSDDEFDEESEEG
 KAAISQLRSPRVKESISNSELFPPTDPVGTLLQVPEQISAHLPQAPQIATQPTQVSLPPTAEPKTAQA
 LSSGSGSQETKIPIISLVLRRLRNSKKELNDRFETPGRDTAEGVQSLEISAGLVDRDLVIVAANLQKIV
 EEPQSNRSVTFKLASGVEGSDIPDDGKLGFAQLSIS

TRTRPLEQKLISEEDLAANDILDYKDDDDKV

Chromatograms:

https://cdn.origene.com/chromatograms/mk6151_f08.zip

Restriction Sites:

SgfI-MluI

Cloning Scheme:


ACCN: NM_005109

ORF Size: 1581 bp

OTI Disclaimer: The molecular sequence of this clone aligns with the gene accession number as a point of reference only. However, individual transcript sequences of the same gene can differ through naturally occurring variations (e.g. polymorphisms), each with its own valid existence. This clone is substantially in agreement with the reference, but a complete review of all prevailing variants is recommended prior to use. [More info](#)

OTI Annotation: This clone was engineered to express the complete ORF with an expression tag. Expression varies depending on the nature of the gene.

Components: The ORF clone is ion-exchange column purified and shipped in a 2D barcoded Matrix tube containing 10ug of transfection-ready, dried plasmid DNA (reconstitute with 100 ul of water).

- Reconstitution Method:**
1. Centrifuge at 5,000xg for 5min.
 2. Carefully open the tube and add 100ul of sterile water to dissolve the DNA.
 3. Close the tube and incubate for 10 minutes at room temperature.
 4. Briefly vortex the tube and then do a quick spin (less than 5000xg) to concentrate the liquid at the bottom.
 5. Store the suspended plasmid at -20°C. The DNA is stable for at least one year from date of shipping when stored at -20°C.

Note: Plasmids are not sterile. For experiments where strict sterility is required, filtration with 0.22um filter is required.

RefSeq: [NM_005109.3](#)

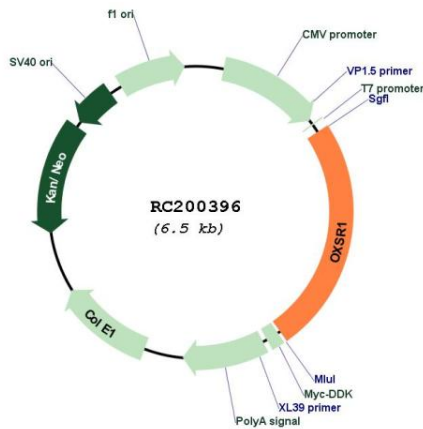
RefSeq Size: 4525 bp

RefSeq ORF: 1584 bp

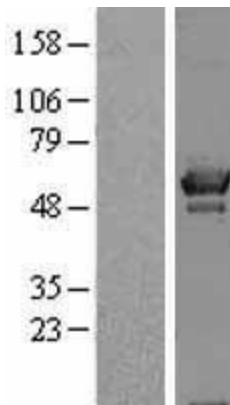
Locus ID: 9943

UniProt ID: [O95747](#)
Cytogenetics: 3p22.2
Domains: pkinase, TyrKc, S_TKc
Protein Families: Druggable Genome, Protein Kinase
MW: 58 kDa
Gene Summary: The product of this gene belongs to the Ser/Thr protein kinase family of proteins. It regulates downstream kinases in response to environmental stress, and may play a role in regulating the actin cytoskeleton. [provided by RefSeq, Jul 2008]

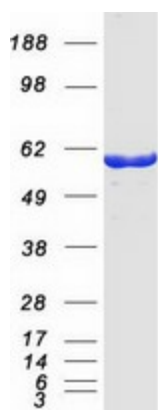
Product images:



Circular map for RC200396



Western blot validation of overexpression lysate (Cat# [LY401573]) using anti-DDK antibody (Cat# [TA50011-100]). Left: Cell lysates from untransfected HEK293T cells; Right: Cell lysates from HEK293T cells transfected with RC200396 using transfection reagent MegaTran 2.0 (Cat# [TT210002]).



Coomassie blue staining of purified OXSR1 protein (Cat# [TP300396]). The protein was produced from HEK293T cells transfected with OXSR1 cDNA clone (Cat# RC200396) using MegaTran 2.0 (Cat# [TT210002]).