

Product datasheet for **RC200392**

CD68 (NM_001251) Human Tagged ORF Clone

Product data:

Product Type:	Expression Plasmids
Product Name:	CD68 (NM_001251) Human Tagged ORF Clone
Tag:	Myc-DDK
Symbol:	CD68
Synonyms:	GP110; LAMP4; SCARD1
Mammalian Cell Selection:	Neomycin
Vector:	pCMV6-Entry (PS100001)
E. coli Selection:	Kanamycin (25 ug/mL)
ORF Nucleotide Sequence:	>RC200392 ORF sequence Red=Cloning site Blue=ORF Green=Tags(s)

TTTTGTAATACGACTCACTATAGGGCGCCGGGAATTCGTCGACTGGATCCGGTACCGAGGAGATCTGCC
GCC**CGATCGCC**

ATGAGGCTGGCTGTGCTTTTCTCGGGGCCCTGCTGGGGCTACTGGCAGCCAGGGGACAGGGAATGACT
GTCCTCACAAAAATCAGCTACTTTGCTGCCATCCTTCACGGTGACACCCACGGTTACAGAGAGCACTGG
AACCAACCAGCCACAGGACTACCAAGAGCCACAAAACCACCACTCACAGGACAACCACCACAGGCACCACC
AGCCACGGACCCACGACTGCCACTCACAACCCACCACCAGCCATGGAAACGTCACAGTTCATCCAA
CAAGCAATAGCACTGCCACCAGCCAGGGACCCTCAACTGCCACTCACAGTCTGCCACCCTAGTCATGG
AAATGCCACGGTTCATCCAACAAGCAACAGCACTGCCACCAGCCAGGATTCACCAAGTTCGCCCCACCA
GAACCACCTCCACCTCTCCGAGTCCTAGCCCAACCTCCAAGGAGACCATTGGAGACTACACGTGGACCA
ATGGTTCCAGCCCTGTGTCCACCTCCAAGCCAGATTGAGATTCGAGTCATGTACACAACCCAGGGTGG
AGGAGAGGCTGGGGCATCTCTGTACTGAACCCCAACAAACCAAGGTCCAGGGAAGCTGTGAGGGTGGC
CATCCCCACCTGCTTCTCTCATTCCCCTATGGACACCTCAGCTTTGGATTCATGCAGGACCTCCAGCAGA
AGGTTGTCTACCTGAGCTACATGGCGGTGGAGTACAATGTGTCTTCCCCACGCAGCACAGTGGACATT
CTCGGCTCAGAATGCATCCCTTCGAGATCTCAAGCACCCCTGGGGCAGAGCTTCAGTTGCAGCAACTCG
AGCATATTCTTTCACCAGCTGTCCACCTCGACCTGCTCTCCCTGAGGCTCCAGGCTGCTCAGCTGCCCC
ACACAGGGGTCTTTGGCAAAGTTTCTCCTGCCCAAGTACCGGTCCATCTTGTGCTCTCATCATCGG
CCTGATCCTTCTTGGCCTCTCGCCCTGGTGTATTGCTTTCTGCATCATCCGGAGACGCCCATCCGCC
TACCAGGCCCTC

ACGCGTACGCGGCCGCTCGAGCAGAACTCATCTCAGAAGAGGATCTGGCAGCAAATGATATCCTGGATT
ACAAGGATGACGACGATAAGGTTTAA



[View online »](#)

Protein Sequence: >RC200392 protein sequence
Red=Cloning site Green=Tags(s)

MRLAVLFSGALLGLLAAQGTGNDCPHKKSATLLPSFTVTPTVTESTGTTSHRTTKSHKTTTHRTTTTGT
 SHGPTTATHNPTTSHGNVTVHPTSNSTATSQGPSTATHSPATTSHGNATVHPTSNSTATSPGFTSSAHP
 EPPPPSPSPSPTSKETIGDYTWNGSQPCVHLQAQIQIRVMTTQGGGEAWGISVLNPNKTKVQGSCEGA
 HPHLLLSFPYGHLSFGFMQDLQKVVVLSYMAVEYNVSFPHAAQWTFSAQNASLRDLQAPLGQSFSCSNS
 SIIILSPAVHLDLLSLRLQAAQLPHTGVFGQSFSCPSDRSILLPLIIGLILLGLLALVLI AF CI IRRRPSA
 YQAL

TRTRPLEQKLISEEDLAANDILDYKDDDDKV

Chromatograms: https://cdn.origene.com/chromatograms/mk6418_f12.zip

Restriction Sites: SgfI-MluI

Cloning Scheme:



* The last codon before the Stop codon of the ORF

ACCN: NM_001251

ORF Size: 1062 bp

OTI Disclaimer: The molecular sequence of this clone aligns with the gene accession number as a point of reference only. However, individual transcript sequences of the same gene can differ through naturally occurring variations (e.g. polymorphisms), each with its own valid existence. This clone is substantially in agreement with the reference, but a complete review of all prevailing variants is recommended prior to use. [More info](#)

OTI Annotation: This clone was engineered to express the complete ORF with an expression tag. Expression varies depending on the nature of the gene.

Components: The ORF clone is ion-exchange column purified and shipped in a 2D barcoded Matrix tube containing 10ug of transfection-ready, dried plasmid DNA (reconstitute with 100 ul of water).

Reconstitution Method:

1. Centrifuge at 5,000xg for 5min.
2. Carefully open the tube and add 100ul of sterile water to dissolve the DNA.
3. Close the tube and incubate for 10 minutes at room temperature.
4. Briefly vortex the tube and then do a quick spin (less than 5000xg) to concentrate the liquid at the bottom.
5. Store the suspended plasmid at -20°C. The DNA is stable for at least one year from date of shipping when stored at -20°C.

Note: Plasmids are not sterile. For experiments where strict sterility is required, filtration with 0.22um filter is required.

RefSeq: [NM_001251.3](#)

RefSeq Size: 1872 bp

RefSeq ORF: 1065 bp

Locus ID: 968

UniProt ID: [P34810](#)

Cytogenetics: 17p13.1

Domains: Lamp

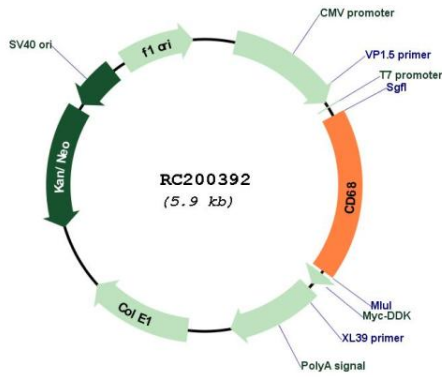
Protein Families: Druggable Genome, Transmembrane

Protein Pathways: Lysosome

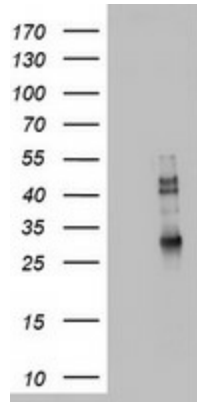
MW: 37.4 kDa

Gene Summary: This gene encodes a 110-kD transmembrane glycoprotein that is highly expressed by human monocytes and tissue macrophages. It is a member of the lysosomal/endosomal-associated membrane glycoprotein (LAMP) family. The protein primarily localizes to lysosomes and endosomes with a smaller fraction circulating to the cell surface. It is a type I integral membrane protein with a heavily glycosylated extracellular domain and binds to tissue- and organ-specific lectins or selectins. The protein is also a member of the scavenger receptor family. Scavenger receptors typically function to clear cellular debris, promote phagocytosis, and mediate the recruitment and activation of macrophages. Alternative splicing results in multiple transcripts encoding different isoforms. [provided by RefSeq, Jul 2008]

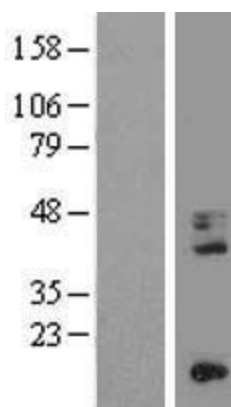
Product images:



Circular map for RC200392



HEK293T cells were transfected with the pCMV6-ENTRY control (Cat# [PS100001], Left lane) or pCMV6-ENTRY CD68 (Cat# RC200392, Right lane) cDNA for 48 hrs and lysed. Equivalent amounts of cell lysates (5 ug per lane) were separated by SDS-PAGE and immunoblotted with anti-CD68 (Cat# [TA802949]). Positive lysates [LY420047] (100ug) and [LC420047] (20ug) can be purchased separately from OriGene.



Western blot validation of overexpression lysate (Cat# [LY420047]) using anti-DDK antibody (Cat# [TA50011-100]). Left: Cell lysates from untransfected HEK293T cells; Right: Cell lysates from HEK293T cells transfected with RC200392 using transfection reagent MegaTran 2.0 (Cat# [TT210002]).