

Product datasheet for **RC200387**

IGBP1 (NM_001551) Human Tagged ORF Clone

Product data:

Product Type:	Expression Plasmids
Product Name:	IGBP1 (NM_001551) Human Tagged ORF Clone
Tag:	Myc-DDK
Symbol:	IGBP1
Synonyms:	ALPHA-4; alpha4; IBP1
Mammalian Cell Selection:	Neomycin
Vector:	pCMV6-Entry (PS100001)
E. coli Selection:	Kanamycin (25 ug/mL)
ORF Nucleotide Sequence:	>RC200387 ORF sequence Red=Cloning site Blue=ORF Green=Tags(s)

TTTTGTAATACGACTCACTATAGGGCGGCCGGAATTCGTCGACTGGATCCGGTACCGAGGAGATCTGCC
GCC**CGATCGCC**

ATGGCTGCTGAGGACGAGTTACAGCTGCCGCGGCTCCCCGAGCTGTTCGAACTGGTAGACAGTTACTGG
ACGAAGTAGAAGTGCGACTGAACCCGCGGTTCCCGGATAGTCCAGGAGAAGGTGTTCAAGGGCTTGA
CCTCCTTGAGAAGGCTGCCGAAATGTTATCGCAGCTCGACTTGTTGAGCCGAAATGAAGATTTGGAAGAG
ATTGCTCCACCGACCTGAAGTACCTTTTGGTGCCAGCGTTTCAAGGAGCCCTCACCATGAAACAAGTCA
ACCCAGCAAGCGTCTAGATCATTGTCAGCGGGCTCGAGAACACTTTATAAACTACTTAACTCAGTGCCA
TTGCTATCATGTGGCAGAGTTTGTAGCTGCCAAAACCATGAACAACCTGCTGAAAATCACACTGCCAAT
TCTCCATGGCTTATCCTAGTCTCGTTGCTATGGCATCTCAAAGACAGGCTAAAAACAGAGATAAAGC
AGAAGAAGGAGTTGGAGCATAGTTGTCTGCAATGAAATCTGCTGTGAAAGTGGTCAAGCAGATGATGA
GCGTGTTCGTGAATATTCTTCTTACCTTCAGAGGTGGATTGATATCAGCTTAGAAGAGATTGAGAGC
ATTGACCAGGAAATAAGATCCTGAGAGAAAGAGACTCTCAAGAGAGGCATCAACTTCTAACTCATCTC
GCCAGGAGAGGCCTCCAGTGAACCCCTTATTCTCACTCGGAACATGGCTCAAGCCAAAGTATTTGGAGC
TGTTATCCAAGTCTGCCAACTATGACGGTGAGTACTGGTATGAGCAACATCGGAAATATGGAGCATT
CCGGATCAGGGAATAGCCAAGGCAGCACAGAGGAATTCAGAAAAGCAGCTCAGCAACAGGAAGAACAAG
AAGAAAAGGAGGAAGAGGATGATGAACAACACTCCACAGAGCCCGGGAGTGGGATGACTGGAAGGACAC
CCATCCTAGGGGCTATGGGAACCGACAGAACATGGGC

ACGCGTACGCGGCCGCTCGAGCAGAACTCATCTCAGAAGAGGATCTGGCAGCAATGATATCCTGGATT
ACAAGGATGACGACGATAAGGTTTAA



[View online »](#)

Protein Sequence: >RC200387 protein sequence
Red=Cloning site Green=Tags(s)

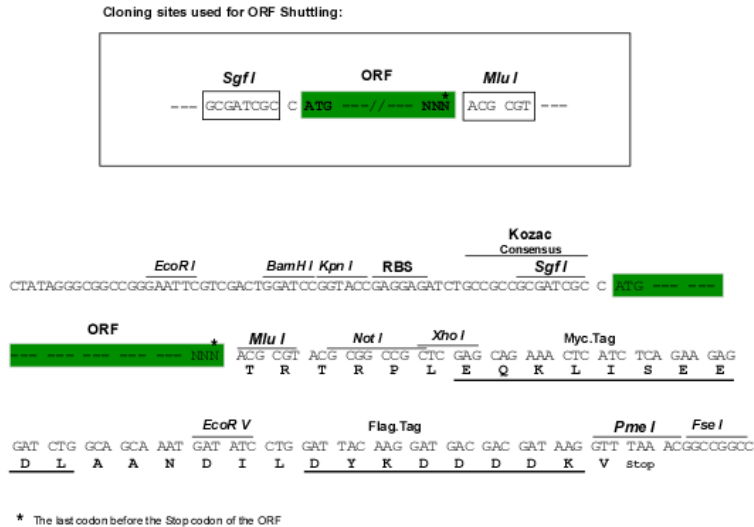
MAAEDELQLPRLPELFETGRQLLDEVEVATEPAGSRIVQEKVFKGLDLLEKAAEMLSQDLDFSRNEDLEE
 IASTDLKYLLVPAFQGalTMKQVNPSKRDLHLQRAREHF INYL TQCHCYHVAEFELPKTMNNSAENHTAN
 SSMAYPSLVAMASQRQAKIQRYKQKKELEHRLSAMKSAVESGQADDERVREYLLHLQRWIDISLEEIES
 IDQEIKILRERDSSREASTSNSSRQERPPVKPFILTRNMAQAKVFGAGYPSLPTMTVSDWYEQHRKYGAL
 PDQGIAKAAPEEFRKAAQQQEEQEEKEEEDDEQTLHRAREWDDWKDTHPRGYGNRQNMG

TRTRPLEQKLISEEDLAANDILDYKDDDDKV

Chromatograms: https://cdn.origene.com/chromatograms/mk6053_f07.zip

Restriction Sites: SgfI-MluI

Cloning Scheme:



ACCN: NM_001551

ORF Size: 1017 bp

OTI Disclaimer: The molecular sequence of this clone aligns with the gene accession number as a point of reference only. However, individual transcript sequences of the same gene can differ through naturally occurring variations (e.g. polymorphisms), each with its own valid existence. This clone is substantially in agreement with the reference, but a complete review of all prevailing variants is recommended prior to use. [More info](#)

OTI Annotation: This clone was engineered to express the complete ORF with an expression tag. Expression varies depending on the nature of the gene.

Components: The ORF clone is ion-exchange column purified and shipped in a 2D barcoded Matrix tube containing 10ug of transfection-ready, dried plasmid DNA (reconstitute with 100 ul of water).

Reconstitution Method:

1. Centrifuge at 5,000xg for 5min.
2. Carefully open the tube and add 100ul of sterile water to dissolve the DNA.
3. Close the tube and incubate for 10 minutes at room temperature.
4. Briefly vortex the tube and then do a quick spin (less than 5000xg) to concentrate the liquid at the bottom.
5. Store the suspended plasmid at -20°C. The DNA is stable for at least one year from date of shipping when stored at -20°C.

Note: Plasmids are not sterile. For experiments where strict sterility is required, filtration with 0.22um filter is required.

RefSeq: [NM_001551.3](#)

RefSeq Size: 1679 bp

RefSeq ORF: 1020 bp

Locus ID: 3476

UniProt ID: [P78318](#)

Cytogenetics: Xq13.1

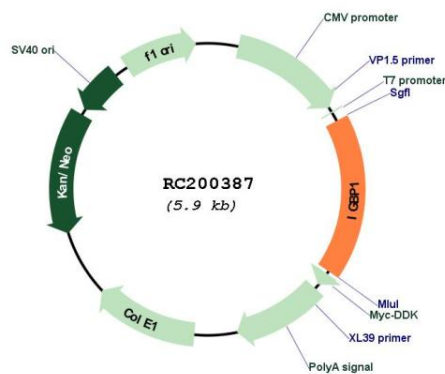
Domains: TAP42

Protein Families: Druggable Genome

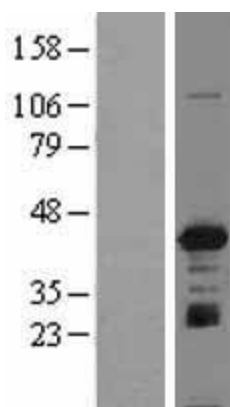
MW: 39.2 kDa

Gene Summary: The proliferation and differentiation of B cells is dependent upon a B-cell antigen receptor (BCR) complex. Binding of antigens to specific B-cell receptors results in a tyrosine phosphorylation reaction through the BCR complex and leads to multiple signal transduction pathways. [provided by RefSeq, Jul 2008]

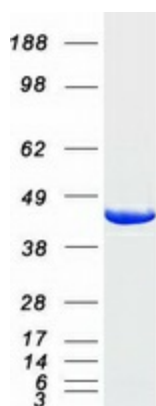
Product images:



Circular map for RC200387



Western blot validation of overexpression lysate (Cat# [LY400594]) using anti-DDK antibody (Cat# [TA50011-100]). Left: Cell lysates from untransfected HEK293T cells; Right: Cell lysates from HEK293T cells transfected with RC200387 using transfection reagent MegaTran 2.0 (Cat# [TT210002]).



Coomassie blue staining of purified IGBP1 protein (Cat# [TP300387]). The protein was produced from HEK293T cells transfected with IGBP1 cDNA clone (Cat# RC200387) using MegaTran 2.0 (Cat# [TT210002]).