

## Product datasheet for RC200376

### BUB3 (NM\_004725) Human Tagged ORF Clone

#### Product data:

Product Type:	Expression Plasmids
Product Name:	BUB3 (NM_004725) Human Tagged ORF Clone
Tag:	Myc-DDK
Symbol:	BUB3
Synonyms:	BUB3L; hBUB3
Mammalian Cell Selection:	Neomycin
Vector:	pCMV6-Entry (PS100001)
E. coli Selection:	Kanamycin (25 ug/mL)
ORF Nucleotide Sequence:	>RC200376 representing NM_004725 Red=Cloning site Blue=ORF Green=Tags(s)

TTTTGTAATACGACTCACTATAGGGCGGCCGGAATTCGTCGACTGGATCCGGTACCGAGGAGATCTGCC  
GCC**CGATCGCC**

ATGACCGTTCTAACGAGTTCAAGCTGAACCAGCCACCCGAGGATGGCATCTCCTCCGTGAAGTTCAGCC  
CCAACACCTCCCAGTTCCTGCTGTCTCCTCCTGGGACACGTCCGTGCGTCTCTACGATGTGCCGGCCAA  
CTCCATGCGGCTCAAGTACCAGCACACCCGGCGCCGTCCTGGACTGCGCCTTCTACGATCCAACGCATGCC  
TGGAGTGGAGGACTAGATCATCAATTGAAAATGCATGATTTGAACACTGATCAAGAAAATCTTGTGGGA  
CCCATGATGCCCTATCAGATGTGTTGAATACTGTCCAGAAGTGAATGTGATGGTCACTGGAAGTTGGGA  
TCAGACAGTTAACTGTGGGATCCAGAACTCCTTGTAATGCTGGGACCTTCTCTCAGCCTGAAAAGGTA  
TATACCCTCTCAGTGTCTGGAGACCGGCTGATTGTGGAAACAGCAGGCCGAGAGTGTGGTGTGGGACT  
TACGGAACATGGGTTACGTGCAGCAGCGCAGGGAGTCCAGCCTGAAATACCAGACTCGCTGCATACGAGC  
GTTTCCAAACAAGCAGGGTTATGTATTAAGCTCTATTGAAGGCCGAGTGGCAGTTGAGTATTTGGACCCA  
AGCCCTGAGGTACAGAAGAAGAAGTATGCCTTCAAATGTCACAGACTAAAAGAAAATAATATTGAGCAGA  
TTTACCAGTCAATGCCATTTCTTTTACAATATCCACAATACATTTGCCACAGGTGGTTCTGATGGCTT  
TGTAATATTTGGGATCCATTTAACAAAAAGCGACTGTGCCAATCCATCGGTACCCACGAGCATCGCA  
TCACCTTGCCTTCAGTAATGATGGGACTACGCTTGCAATAGCGTCATCATATATGTATGAAATGGATGACA  
CAGAACATCCTGAAGATGGTATCTTCATTCCGCAAGTGACAGATGCAGAAACAAAACCAAGTACCATG  
TACT

**ACGCGT**ACGCGGCCGCTCGAGCAGAACTCATCTCAGAAGAGGATCTGGCAGCAAATGATATCCTGGATT  
ACAAGGATGACGACGATAAGGTTTAA



[View online »](#)

**Protein Sequence:** >RC200376 representing NM\_004725  
Red=Cloning site Green=Tags(s)

MTGSNEFKLNQPPEDGISSVKFSPNTSQFLLVSSWDTSVRLYDVPANSMRLKYQHTGAVLDCAFYDPHTA  
 WSGGLDHQLKMHDNLNTDQENLVGTHDAPIRCVEYCPEVNMVMTGSWDQTVKLWDPRTPCNAGTFSQPEKV  
 YTL SVSGDRLIVGTAGRRVLVWDLRNMGYVQQRRESSLKYQTRCIRAFPNKQGYVLSIEGRVAVEYLDLP  
 SPEVQKKKYAFKCHRLKENNIEQIYPVNAISFHNIHNTFATGGSDGFVNIWDPFNKKRLCQFHRYPTSIA  
 SLAF SNDGTTLAIASSYMEDDTEHPEDGIFIRQVTD AETKPKSPCT

TRTRPLEQKLISEEDLAANDILDYKDDDDKV

**Chromatograms:** [https://cdn.origene.com/chromatograms/mk8076\\_b06.zip](https://cdn.origene.com/chromatograms/mk8076_b06.zip)

**Restriction Sites:** SgfI-MluI

**Cloning Scheme:**

Cloning sites used for ORF Shuttling:



\* The last codon before the Stop codon of the ORF

**ACCN:** NM\_004725

**ORF Size:** 984 bp

**OTI Disclaimer:** The molecular sequence of this clone aligns with the gene accession number as a point of reference only. However, individual transcript sequences of the same gene can differ through naturally occurring variations (e.g. polymorphisms), each with its own valid existence. This clone is substantially in agreement with the reference, but a complete review of all prevailing variants is recommended prior to use. [More info](#)

**OTI Annotation:** This clone was engineered to express the complete ORF with an expression tag. Expression varies depending on the nature of the gene.

**Components:** The ORF clone is ion-exchange column purified and shipped in a 2D barcoded Matrix tube containing 10ug of transfection-ready, dried plasmid DNA (reconstitute with 100 ul of water).

**Reconstitution Method:**

1. Centrifuge at 5,000xg for 5min.
2. Carefully open the tube and add 100ul of sterile water to dissolve the DNA.
3. Close the tube and incubate for 10 minutes at room temperature.
4. Briefly vortex the tube and then do a quick spin (less than 5000xg) to concentrate the liquid at the bottom.
5. Store the suspended plasmid at -20°C. The DNA is stable for at least one year from date of shipping when stored at -20°C.

**Note:** Plasmids are not sterile. For experiments where strict sterility is required, filtration with 0.22um filter is required.

**RefSeq:** [NM\\_004725.4](#)

**RefSeq Size:** 2659 bp

**RefSeq ORF:** 987 bp

**Locus ID:** 9184

**UniProt ID:** [O43684](#)

**Cytogenetics:** 10q26.13

**Domains:** WD40

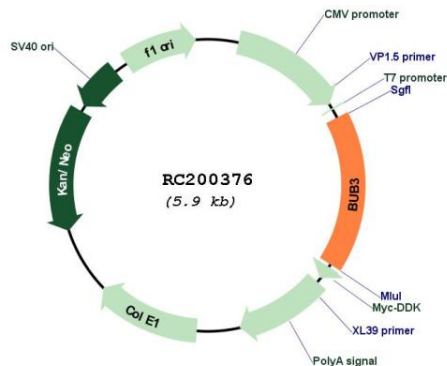
**Protein Families:** Druggable Genome

**Protein Pathways:** Cell cycle

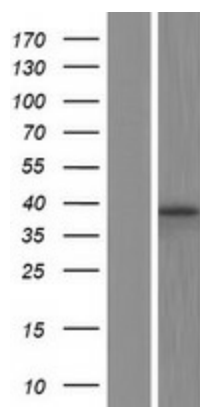
**MW:** 37 kDa

**Gene Summary:** This gene encodes a protein involved in spindle checkpoint function. The encoded protein contains four WD repeat domains and has sequence similarity with the yeast BUB3 protein. Alternate transcriptional splice variants, encoding different isoforms, have been characterized. [provided by RefSeq, Jul 2008]

## Product images:



Circular map for RC200376



Western blot validation of overexpression lysate (Cat# [LY417795]) using anti-DDK antibody (Cat# [TA50011-100]). Left: Cell lysates from untransfected HEK293T cells; Right: Cell lysates from HEK293T cells transfected with RC200376 using transfection reagent MegaTran 2.0 (Cat# [TT210002]).