

Product datasheet for **RC200372**

Drebrin (DBN1) (NM_004395) Human Tagged ORF Clone

Product data:

Product Type:	Expression Plasmids
Product Name:	Drebrin (DBN1) (NM_004395) Human Tagged ORF Clone
Tag:	Myc-DDK
Symbol:	Drebrin
Synonyms:	D0S117E
Mammalian Cell Selection:	Neomycin
Vector:	pCMV6-Entry (PS100001)
E. coli Selection:	Kanamycin (25 ug/mL)



[View online »](#)

ORF Nucleotide
Sequence:

>RC200372 ORF sequence
Red=Cloning site Blue=ORF Green=Tags(s)

TTTTGTAATACGACTCACTATAGGGCGGCCGGAATTCGTCGACTGGATCCGGTACCGAGGAGATCTGCC
GCCGCGATCGCC

ATGGCCGGCGTCAGCTTCAGCGGCCACCGCTGGAGCTGTGGCGGCTTACGAGGAGGTGATCCGAGAGG
AGAGCGCGGCCGACTGGGCTCTGTACACATATGAAGATGGCTCCGATGACCTCAAGCTTGCAGCATCAGG
AGAAGGGGGCTTGCAGGAGCTTTTCGGGACACTTTGAGAACCAGAAGGTGATGTACGGCTTCTGCAGTGTC
AAGGACTCCCAAGCTGCTCTGCCAAAATACGTGCTCATCAACTGGGTGGGCGAAGATGTGCCTGATGCC
GCAAGTGCCTTGTGCCAGCCACGTGGTAAGGTGGCAGAGTTCTTCCAGGGTGTGACGTGATCGTGAA
CGCCAGCAGCGTGAAGACATAGACCGGGTGCCATCGGGCAGCGGCTCTAACGGGCTGGCGCGACTC
TCCAGCCTGTGTGCACCGACTGCGGCTGCGAGAGGATGAGAACGCAGAGCCCGTGGGCACCACCTACC
AGAAGACGGATGCAGCTGTGAAATGAAGCGGATTAACCGAGAGCAGTTCTGGGAGCAGGCCAAGAAGGA
AGAAGAGCTGCGGAAGGAGGAGGAGCGGAAGAAGGCCCTGGATGAGAGGCTCAGTTTCGAGCAGGAGCGG
ATGGAGCAGGAGCGGCAGGAGCAAGAGGAGCGCAGCGCGCTACCGGGAGCGGGAGCAGCAGATCGAGG
AGCACAGGAGGAAACAGCAGACTTTAGAAGCGGAAGAGGCCAAGAGGCGGTTGAAGGAGCAGTCTATCTT
TGGTGACCATCGGGATGAGGAGGAAGAGACCCACATGAAGAAGTCAGAGTCGGAGGTGGAGGAGGCAGCA
GCTATTATTGCCAGCGGCTGACAACCAAGGGAGTTCTTCAAGCAGCAGGAAAGAGTCGCATCGGCCCT
CTGCGGGCAGCTGTGATGTACCTCGCCCTTCAACCATCGACCAGGCAGCCACCTGGACAGCCACCGGAG
GATGGCGCCCACTCCCATCCCCACGCGGAGCCCGTCTGACTCCAGCACCCTCCACCCCTGTGCTGAG
CAGATAGAGCGGGCCCTGGATGAGGTCACCTCCTCGCAGCCTCCACCACTGCCACCGCCACCCCAACCAG
CCCAAGAGACCCAGGAGCCAGCCCATCCTAGACAGTGAGGAGACCAGAGCAGCAGCCCTCAGGCCTG
GGCCGGCCCATGGAGGAGCCCTCAGGCACAGGCGCCTCCCCGGGGGCCAGGCAGCCCTGCAGAGGAC
TTGATGTTTCATGGAGTCTGCAGAGCAGGCTGTCCTGGCTGCTCCCGTGGAGCCTGCCACAGCTGACGCCA
CGGAGGTCACGATGCAGCTGACACATTGAAACTGACACTGCCACTGCTGACACCACTGTTGCCAACAA
CGTACCCCGCCGCCACCAGCCTCATTGACCTATGGCTGGCAACGGGAAGGGGCTCCACACTCCAG
GGTGAGCCAGGGCCCCACGCCACCTCGGGTACTGAGGTACCCTGGCAGAGGTGCCCTGCTGGATG
AGGTGGCTCCGGAGCCACTGCTGCCAGCAGGCGAAGGCTGTGCCACCCTTCTCAACTTTGATGAGCTGCC
TGAGCCGCCAGCCACCTTCTGTGACCCAGAGGAAGTGAAGGGGAGCCCTGGCTGCCCCCAGACCCCA
ACTCTGCCCTCAGCCCTTGAGGAGCTGGAGCAAGAGCAGGAGCCGAGCCCACTGCTAACCAATGGCG
AGACCACCAGAAGGAGGGGACCCAGGCCAGTGAGGGGTACTTCAGTCAATCACAGGAGGAGGATTTGC
CCAATCGGAAGAGCTCTGTGCCAAGGCTCCGCCTCCTGTGTTCTACAACAAGCCTCCAGAGATCGACATC
ACATGCTGGGATGCAGACCCAGTTCAGAAGAGGAGGAGGGCTTCGAGGGTGGTGAT

ACGCGTACGCGGCCGCTCGAGCAGAACTCATCTCAGAAGAGGATCTGGCAGCAATGATATCCTGGATT
ACAAGGATGACGACGATAAGGTTTAA

Protein Sequence: >RC200372 protein sequence
 Red=Cloning site Green=Tags(s)

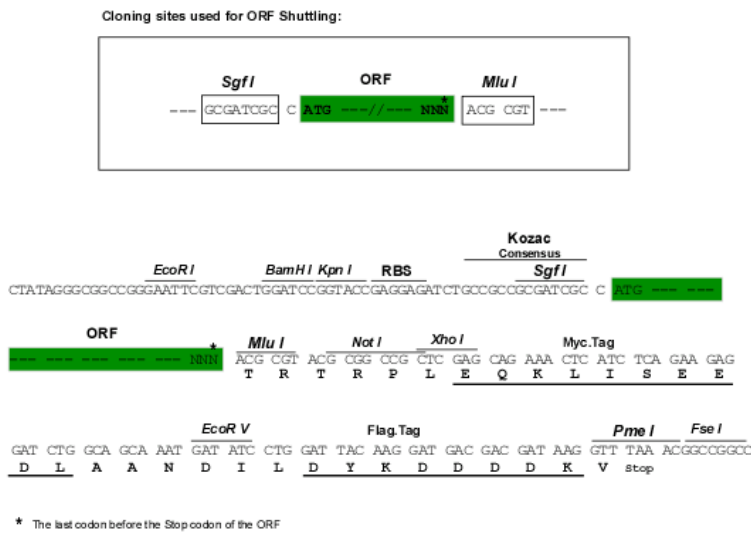
MAGVSFSGHRLELLAAYEEVIREESAADWALTYEDGSDDLKLAASGEGGLQELSGHFENQKVMYGFCSV
 KDSQAALPKYVLINWVGEDVPDARKCACASHVAKVAEFFQGVVDIVNASSVEDIDAGAIGQRLSNGLARL
 SSPVLHRLRLREDENAEPVGTYYQKTDAAVEMKRINREQFWEQAKKEELRKEEERKKALDERLRFEQER
 MEQERQEQEERERRREREQQIEEHRRKQQTLEAEEAKRRLKEQSIFGDHRDEEEETHMKKSESEVEEAA
 AIIAQRPDNPREFFKQQERVASASAGSCDVPSPFNHRPGSHLDSHRRMAPTPIPTRSPSDSSTASTPVAE
 QIERALDEVTSSQPPLPPPPPAQETQEPSPILDSEETRAAAPQAWAGPMEPPQAQAPPRGPGSPAED
 LMFMESAEQAVLAAPVEPATADATEVHDAADTIETDTATADTTVANNVPPAATSLIDLWPGNEGEGASTLQ
 GEPRAPTPPSGTEVTLAEVPLLDEVAPEPLLPAGEGCATLLNFDELPEPPATFCDPPEVEGEPLAAPQTP
 TLPALAELEQEQEPEPHLLTNGETTQKEGTQASEGYFSQSQEEFAQSEELCAKAPPPVFYKPKPEIDI
 TCWDADVPVEEEGFEGGD

TRTRPLEQKLISEEDLAANDILDYKDDDDKV

Chromatograms: https://cdn.origene.com/chromatograms/mk6278_h09.zip

Restriction Sites: SgfI-MluI

Cloning Scheme:



ACCN: NM_004395

ORF Size: 1947 bp

OTI Disclaimer: The molecular sequence of this clone aligns with the gene accession number as a point of reference only. However, individual transcript sequences of the same gene can differ through naturally occurring variations (e.g. polymorphisms), each with its own valid existence. This clone is substantially in agreement with the reference, but a complete review of all prevailing variants is recommended prior to use. [More info](#)

OTI Annotation: This clone was engineered to express the complete ORF with an expression tag. Expression varies depending on the nature of the gene.

Components: The ORF clone is ion-exchange column purified and shipped in a 2D barcoded Matrix tube containing 10ug of transfection-ready, dried plasmid DNA (reconstitute with 100 ul of water).

Reconstitution Method:

1. Centrifuge at 5,000xg for 5min.
2. Carefully open the tube and add 100ul of sterile water to dissolve the DNA.
3. Close the tube and incubate for 10 minutes at room temperature.
4. Briefly vortex the tube and then do a quick spin (less than 5000xg) to concentrate the liquid at the bottom.
5. Store the suspended plasmid at -20°C. The DNA is stable for at least one year from date of shipping when stored at -20°C.

Note: Plasmids are not sterile. For experiments where strict sterility is required, filtration with 0.22um filter is required.

RefSeq: [NM_004395.1](#)

RefSeq Size: 2942 bp

RefSeq ORF: 1950 bp

Locus ID: 1627

UniProt ID: [Q16643](#)

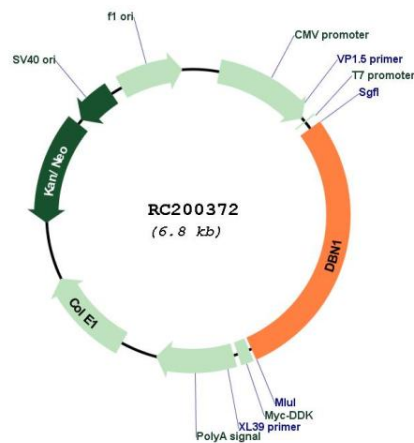
Cytogenetics: 5q35.3

Domains: ADF

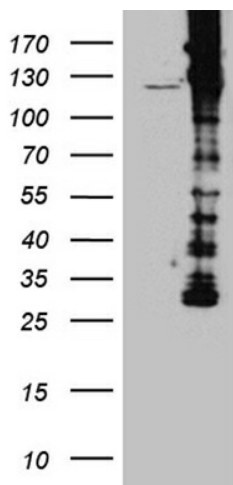
MW: 71.4 kDa

Gene Summary: The protein encoded by this gene is a cytoplasmic actin-binding protein thought to play a role in the process of neuronal growth. It is a member of the drebrin family of proteins that are developmentally regulated in the brain. A decrease in the amount of this protein in the brain has been implicated as a possible contributing factor in the pathogenesis of memory disturbance in Alzheimer's disease. At least two alternative splice variants encoding different protein isoforms have been described for this gene. [provided by RefSeq, Jul 2008]

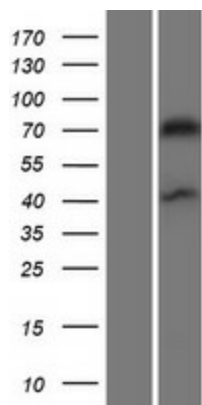
Product images:



Circular map for RC200372



HEK293T cells were transfected with the pCMV6-ENTRY control (Cat# [PS100001], Left lane) or pCMV6-ENTRY DBN1 (Cat# RC200372, Right lane) cDNA for 48 hrs and lysed. Equivalent amounts of cell lysates (5 ug per lane) were separated by SDS-PAGE and immunoblotted with anti-DBN1 (Cat# [TA812128]). Positive lysates [LY418021] (100ug) and [LC418021] (20ug) can be purchased separately from OriGene.



Western blot validation of overexpression lysate (Cat# [LY418021]) using anti-DDK antibody (Cat# [TA50011-100]). Left: Cell lysates from untransfected HEK293T cells; Right: Cell lysates from HEK293T cells transfected with RC200372 using transfection reagent MegaTran 2.0 (Cat# [TT210002]).