

## Product datasheet for **RC200370**

### FAM50A (NM\_004699) Human Tagged ORF Clone

#### Product data:

Product Type:	Expression Plasmids
Product Name:	FAM50A (NM_004699) Human Tagged ORF Clone
Tag:	Myc-DDK
Symbol:	FAM50A
Synonyms:	9F; DXS9928E; HXC-26; HXC26; MRXSA; XAP5
Mammalian Cell Selection:	Neomycin
Vector:	pCMV6-Entry (PS100001)
E. coli Selection:	Kanamycin (25 ug/mL)
ORF Nucleotide Sequence:	>RC200370 representing NM_004699 Red=Cloning site Blue=ORF Green=Tags(s)

TTTTGTAATACGACTCACTATAGGGCGGCCGGAATTCGTCGACTGGATCCGGTACCGAGGAGATCTGCC  
GCC**CGATCGCC**

ATGGCTCAATACAAGGGCGCCGCGAGCGAGGCGGCCGCGCCATGCACCTGATGAAGAAGCGGGAGAAGC  
AGCGCGAGCAGATGGAGCAGATGAAGCAGCGCATCGCGGAGGAGAACATCATGAAATCCAACATTGACAA  
GAAGTTCTCTGCGCACTACGACGCGGTGGAGGCAGAGCTCAAGTCCAGCACCGTGGGTCTCGTGACCCTG  
AATGACATGAAGCCAAGCAGGAGGCTCTGGTGAAGGAGCGGGAGAAGCAGCTGGCCAAGAAGGAGCAGT  
CCAAGGAGCTGCAGATGAAGCTGGAGAAGCTTCGAGAGAAGGAGCGTAAGAAGGAAGCCAAGCGGAAGAT  
CTCCAGCCTGTCTTCACCCTGGAGGAGGAAGAAGAGGGAGGCGAGGAGGAAGAGGAGGCCGCCATGTAT  
GAGGAGGAGATGGAAAGGGAAGAGATCACACGAAGAAGAGAAAAGTGGGGAAGAAGCCAGACGTTGACA  
CAAGCTTCTTGCCTGATCGAGACCGTGAGGAGGAGGAGAATCGGCTTCGGGAAGAGCTGCGGCAGGAGTG  
GGAAGCCAAGCAGGAGAAGATCAAGAGTGAGGAGATCGAGATCACCTTCAGCTACTGGATGGCTCTGGG  
CACCGCGGACAGTCAAGATGAGAAAGGCAACACCATGCAGCAGTTCCTGCAGAAGCGCTCGAGATCC  
TTCGAAAAGACTTCAGTGAGCTGAGGTCGCGGGTGGAGCAGCTCATGTACATCAAGGAGGACTTGAT  
CATCCCTACCATCACAGCTTCTACGACTTCATCGTACCAAGGCACGGGGAAGAGTGGACCACTTTC  
AACTTTGATGTTTCATGACGATGTGCGGTTGCTCAGTGACGCCACTGTGGAGAAGGATGAGTCCCATGCAG  
GCAAGGTGGTGTGAGGAGCTGGTACGAGAAGAACAAGCATCTTTCCCGCCAGCCGCTGGGAACCCCTA  
CGACCCTGAAAAGAAGTGGGACAAGTACACGATCCGC

**ACGCGT**ACGCGGCCGCTCGAGCAGAAACTCATCTCAGAAGAGGATCTGGCAGCAAATGATATCCTGGATT  
ACAAGGATGACGACGATAAGGTTTAA



**Protein Sequence:** >RC200370 representing NM\_004699  
Red=Cloning site Green=Tags(s)

MAQYKGAASEAGRAMHLMKKREKQREQMEQMKQRIAEENIMKSNIDKKFSAHYDAVEALKSSTVGLVTL  
 NDMKAKQEALVKEREKQLAKKEQSKELQMKLEKLREKERKKEAKRKISSLSFTLEEEEEEGEEEEEAAMY  
 EEEMEREEITTKRKLGNPDVDTSLPDRDREEEENRLREELRQEWAKQEKIKSEEIEITFSYWDGSG  
 HRRTVKMRKGNTMQQFLQKALEILRKDFSELRSAGVEQLMYIKEDLIIPHHHSFYDFIVTKARGKSGPLF  
 NFDVHDDVRLSDATVEKDESHAGKVVLRSWYEKNKHIFPASRWEPEYDPEKKWKDYKTYIR

TRTRPLEQKLISEEDLAANDILDYKDDDDKV

**Chromatograms:** [https://cdn.origene.com/chromatograms/mg2737\\_d01.zip](https://cdn.origene.com/chromatograms/mg2737_d01.zip)

**Restriction Sites:** SgfI-MluI

**Cloning Scheme:**

Cloning sites used for ORF Shuttling:



\* The last codon before the Stop codon of the ORF

**ACCN:** NM\_004699

**ORF Size:** 1017 bp

**OTI Disclaimer:** The molecular sequence of this clone aligns with the gene accession number as a point of reference only. However, individual transcript sequences of the same gene can differ through naturally occurring variations (e.g. polymorphisms), each with its own valid existence. This clone is substantially in agreement with the reference, but a complete review of all prevailing variants is recommended prior to use. [More info](#)

**OTI Annotation:** This clone was engineered to express the complete ORF with an expression tag. Expression varies depending on the nature of the gene.

**Components:** The ORF clone is ion-exchange column purified and shipped in a 2D barcoded Matrix tube containing 10ug of transfection-ready, dried plasmid DNA (reconstitute with 100 ul of water).

**Reconstitution Method:**

1. Centrifuge at 5,000xg for 5min.
2. Carefully open the tube and add 100ul of sterile water to dissolve the DNA.
3. Close the tube and incubate for 10 minutes at room temperature.
4. Briefly vortex the tube and then do a quick spin (less than 5000xg) to concentrate the liquid at the bottom.
5. Store the suspended plasmid at -20°C. The DNA is stable for at least one year from date of shipping when stored at -20°C.

**Note:** Plasmids are not sterile. For experiments where strict sterility is required, filtration with 0.22um filter is required.

**RefSeq:** [NM\\_004699.4](#)

**RefSeq Size:** 1311 bp

**RefSeq ORF:** 1020 bp

**Locus ID:** 9130

**UniProt ID:** [Q14320](#)

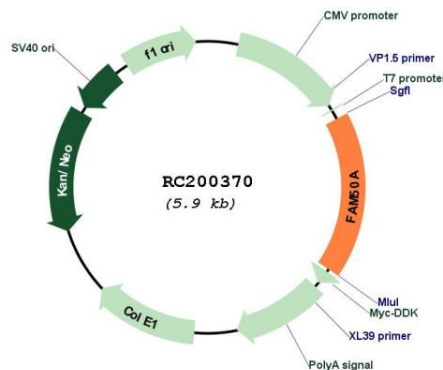
**Cytogenetics:** Xq28

**Domains:** XAP5

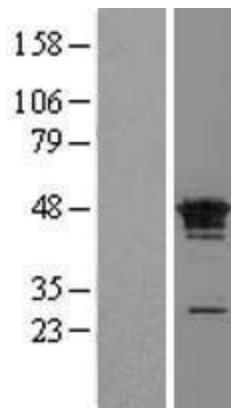
**MW:** 40.1 kDa

**Gene Summary:** This gene belongs to the FAM50 family. The encoded protein is highly conserved in length and sequence across different species. It is a basic protein containing a nuclear localization signal, and may function as a DNA-binding protein or a transcriptional factor. [provided by RefSeq, Sep 2009]

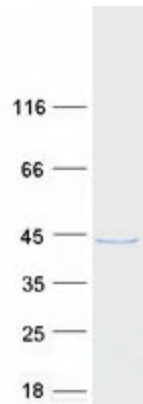
### Product images:



Circular map for RC200370



Western blot validation of overexpression lysate (Cat# [LY417827]) using anti-DDK antibody (Cat# [TA50011-100]). Left: Cell lysates from untransfected HEK293T cells; Right: Cell lysates from HEK293T cells transfected with RC200370 using transfection reagent MegaTran 2.0 (Cat# [TT210002]).



Coomassie blue staining of purified FAM50A protein (Cat# [TP300370]). The protein was produced from HEK293T cells transfected with FAM50A cDNA clone (Cat# RC200370) using MegaTran 2.0 (Cat# [TT210002]).