

Product datasheet for **RC200366**

ETV5 (NM_004454) Human Tagged ORF Clone

Product data:

Product Type:	Expression Plasmids
Product Name:	ETV5 (NM_004454) Human Tagged ORF Clone
Tag:	Myc-DDK
Symbol:	ETV5
Synonyms:	ERM
Mammalian Cell Selection:	Neomycin
Vector:	pCMV6-Entry (PS100001)
E. coli Selection:	Kanamycin (25 ug/mL)



[View online »](#)

ORF Nucleotide Sequence:

>RC200366 ORF sequence
 Red=Cloning site Blue=ORF Green=Tags(s)

TTTTGTAATACGACTCACTATAGGGCGGCCGGAATTCGTCGACTGGATCCGGTACCGAGGAGATCTGCC
 GCC**CGATCGCC**

ATGGACGGGTTTTATGATCAGCAAGTCCCTTTTATGGTCCAGGAAATCTCGATCTGAGGAATGCAGAG
 GCGGCCCTGTGATTGACAGAAAGAGGAAGTTTTGGACACAGATCTGGCTCACGATTCTGAAGAGCTATT
 TCAGGATCTCAGTCAACTTCAAGAGGCTTGTTAGCTGAAGCACAAAGTTCCTGATGATGAACAGTTTGTC
 CCAGATTTTCAGTCTGATAACCTGGTGCTTCATGCCCCACCTCCAACCAAGATCAAACGGGAGCTGCACA
 GCCCTCTCTGAGCTGTCGTCTGTAGCCATGAGCAGGCTCTTGGTGCTAACTATGGAGAAAAGTGCTT
 CTACAATATTGTGCCTATGATAGGAAGCCTCCCTCTGGGTTCAAGCCATTAACCCCTCTACAACCCCT
 CTCTACCCACCCATCAGAATCCCCTATTTCCCCACCTCAGGCAACTCTGCCACCTCAGGGCATGCC
 CTGCAGCTGGCCAGTTCAGGTGTGGCCCCGCCGCCGCCATTGCTTCCAGAGCCTGGACCACA
 GCAGAAACATTTGCGGTCCCCGACCACCACATCAGCCCTGCAGATGCCAAAGATGATGCCTGAAAAC
 CAGTATCCATCAGAACAGAGATTTAGAGACAAGTGTCTGAACCTGCCACCCCTTCCCTCTCAGCCAG
 GAGTTCCTGGAGATAATCGCCCCAGTTACCATCGGCAATGTCAGAACCTATTGTCCCTGCAGCTCCCC
 GCCCCTCAGGGATCAAACAAGAATACCATGACCCACTATGAACATGGGGTCCCGGGCATGCCAGGG
 CCCCAGCACACGGGTTCCAGTCAACATGGGAATCAAGCAGGAGCCTCGGGATTACTGCGTCGATTGAG
 AAGTGCCTAACTGCCAGTCACTACATGAGAGGGGTTATTTCTCCAGCAGCCTGAAGTTTTTCATA
 TGAAAAGATCCCGATTATACTTTGACGACACTTGTGTTGTGCTGAGAGACTGGAAGGCAAAGTCAA
 CAGGAGCCTACCATGTATCGAGAGGGGCCCTTACCAGAGCGAGGTTCCCTTCAGCTGTGGCAGTTCC
 TGGTACCCTTCTTGATGACCCAGCCAATGCCACTTCAATGGCTGGACAGGTCGAGGCATGGAGTTCAA
 GCTGATAGAACCAGGAGGTTGCTCGGCCTGGGGCATCCAGAAGAACCAGCCAGCCATGAACTATGAC
 AAGCTGAGCCGCTCTCTCCGCTATTACTATGAAAAGGCATCATGCAGAAGTGGCTGGAGAGCGATACG
 TCTACAAATTTGTCTGTGACCCAGATGCCTCTTCTCCATGGCTTTCCCGGATAACCAGCGTCCGTTCT
 GAAGGCAGAGTCCGAGTCCACCTCAGCGAGGAGGACACCCTGCCGCTGACCCACTTTGAAGACAGCCCC
 GCTTACCTCTGGACATGGACCGCTGCAGCAGCCTCCCTATGCCGAAGGCTTTGCTTAC

ACGCGTACGCGGCCGCTCGAGCAGAAACTCATCTCAGAAGAGGATCTGGCAGCAAATGATATCTGGATT
 ACAAGGATGACGACGATAAGGTTTAA

Protein Sequence:

>RC200366 protein sequence
 Red=Cloning site Green=Tags(s)

MDGFYDQVQPFMVPVKSRSEECRGPVIDRKRKFLDLDLAHDSEELFQDLSQLQEAWLAEQVDPDEQFV
 PDFQSDNLVHAPPPTKIKRELHSPSELSSCSHEQALGANYGEKCLYNYCAYDRKPPSGFKPLTPPTT
 LSPTHQNLPLFPPQATLPTSGHAPAAGPVQGVGAPAPAPHSLEPGPQQQTF AVPRPPHQPLQMPKMPEN
 QYPSEQRFRQLSEPCHFPFPQGVPGDNRPSYHRQMSEPIVPAAPPPQGFQYEHDPLEHGVGMPG
 PPAHGFSQPMGIKQEPDYVDSEVPNCQSSYMRGGYFSSSHEGF SYEKDPRLYFDDTCVPERLEGKVK
 QEPTMYREGPPYQRRGSLQLWQFLVTLDDPANAHFIAWTGRGMEFKLIEPEEVARRWGIQKNRPAMNYD
 KLSRSLRYYYEKIMQKVAGERYVYKFVCDPDALFSMAFPDNRPFLLKAESECHLSEEDTLPLTHFEDSP
 AYLLDMDRCSSLPYAEAFAY

TRTRPLEQKLISEEDLAANDILDYKDDDDKV

Chromatograms:

https://cdn.origene.com/chromatograms/mk6206_a06.zip

Restriction Sites:

Sgfl-Mlul

Cloning Scheme:


ACCN: NM_004454

ORF Size: 1530 bp

OTI Disclaimer: The molecular sequence of this clone aligns with the gene accession number as a point of reference only. However, individual transcript sequences of the same gene can differ through naturally occurring variations (e.g. polymorphisms), each with its own valid existence. This clone is substantially in agreement with the reference, but a complete review of all prevailing variants is recommended prior to use. [More info](#)

OTI Annotation: This clone was engineered to express the complete ORF with an expression tag. Expression varies depending on the nature of the gene.

Components: The ORF clone is ion-exchange column purified and shipped in a 2D barcoded Matrix tube containing 10ug of transfection-ready, dried plasmid DNA (reconstitute with 100 ul of water).

- Reconstitution Method:**
1. Centrifuge at 5,000xg for 5min.
 2. Carefully open the tube and add 100ul of sterile water to dissolve the DNA.
 3. Close the tube and incubate for 10 minutes at room temperature.
 4. Briefly vortex the tube and then do a quick spin (less than 5000xg) to concentrate the liquid at the bottom.
 5. Store the suspended plasmid at -20°C. The DNA is stable for at least one year from date of shipping when stored at -20°C.

Note: Plasmids are not sterile. For experiments where strict sterility is required, filtration with 0.22um filter is required.

RefSeq: [NM_004454.3](#)

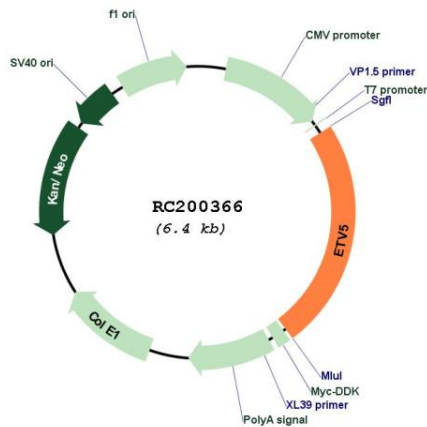
RefSeq Size: 4102 bp

RefSeq ORF: 1533 bp

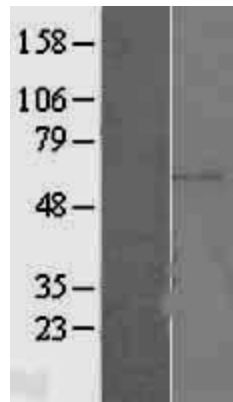
Locus ID: 2119

UniProt ID: [P41161](#)
Cytogenetics: 3q27.2
Domains: ETS, ETS_PEA3_N
Protein Families: Transcription Factors
MW: 57.8 kDa
Gene Summary: Binds to DNA sequences containing the consensus nucleotide core sequence 5'-GGAA.-3'.
 [UniProtKB/Swiss-Prot Function]

Product images:



Circular map for RC200366



Western blot validation of overexpression lysate (Cat# [LY401415]) using anti-DDK antibody (Cat# [TA50011-100]). Left: Cell lysates from untransfected HEK293T cells; Right: Cell lysates from HEK293T cells transfected with RC200366 using transfection reagent MegaTran 2.0 (Cat# [TT210002]).